

01 July 2020

Oil and Energy Market News

Oil prices ended the day up 0.6% at \$41.91 as prices rose following a drawdown in U.S. crude inventories from record highs and a string of positive manufacturing data, but a surge in coronavirus cases tempered gains.

Analysts polled by S&P Global Platts had forecast an average crude supply decline of 2.7 million barrels, while the American Petroleum Institute on Tuesday reported a fall of 8.2 million barrels. The EIA data also showed crude stocks at the Cushing, Okla., storage hub edged down by about 200,000 barrels for the week MarketWatch noted.

EIA week ending 6/26

Crude oil: -7.2M

Gasoline: +1.2M

Distillates: -0.6M

Refiner utiliz: 75.5%

Impld mogas demand: 8.56 Mbpd

Brent Basis:

41.85

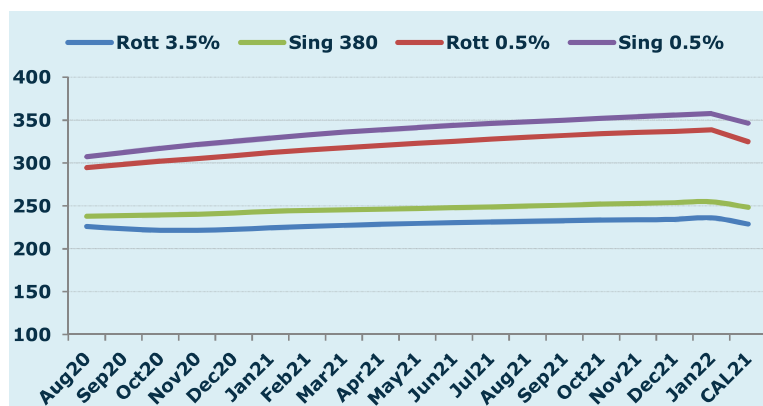
	Barges 3.5 %	Sing 380cst	Rott 0.5%	Sing 0.5%	Sing Hi5
Aug20	226.05	237.80	294.54	307.29	69
Sep20	223.30	238.55	298.54	312.29	74
Oct20	221.55	239.55	302.04	316.79	77
Nov20	221.55	240.30	305.29	321.29	81
Dec20	222.55	241.80	308.29	325.29	83
Jan21	224.55	243.55	312.04	329.04	85
Q4-20	221.90	240.55	305.20	321.15	81
Q1-21	225.97	244.47	314.96	332.63	88
Q2-21	229.55	247.05	322.79	341.29	94
Q3-21	232.05	249.80	329.79	348.04	98
CAL21	228.80	248.30	324.80	346.30	98

Fuel Oil Market

The crack opened at -6.75, strengthening to -6.30 across the day. The Cal 20 crack was valued around -7.70.

The number of vessels that will install exhaust-emission scrubbing technology this year has been revised lower as demand has slowed, according to industry sources and IHS Markit analysts.

Around 2,000 ships had installed scrubbers at the start of 2020, and this total was forecast to rise initially to 3,900 vessels, according to IHS Markit analysts. This figure has now been revised down to between 3,400 and 3,600 vessels. The costs of retrofitting scrubbers is pegged between \$1.5 million and \$5 million.



	Rott GOFO	Sing GOFO	R FoGo	S FoGO	Rott Hi5
Aug20	134.74	117.74	-66.25	-48.25	68
Sep20	140.98	116.99	-65.74	-43.25	75
Oct20	145.61	117.93	-65.12	-40.69	80
Nov20	147.18	119.26	-63.43	-38.27	84
Dec20	148.66	119.85	-62.91	-36.36	86
Jan21	149.80	120.63	-62.31	-35.14	87
Q4-20	147.15	118.91	-63.85	-38.31	83
Q1-21	150.18	122.67	-61.19	-34.51	89
Q2-21	154.81	128.61	-61.56	-34.37	93
Q3-21	160.33	133.48	-62.59	-35.24	98
CAL21	158.56	130.06	-62.56	-32.06	96

01 July 2020

TIME SPREADS FUEL

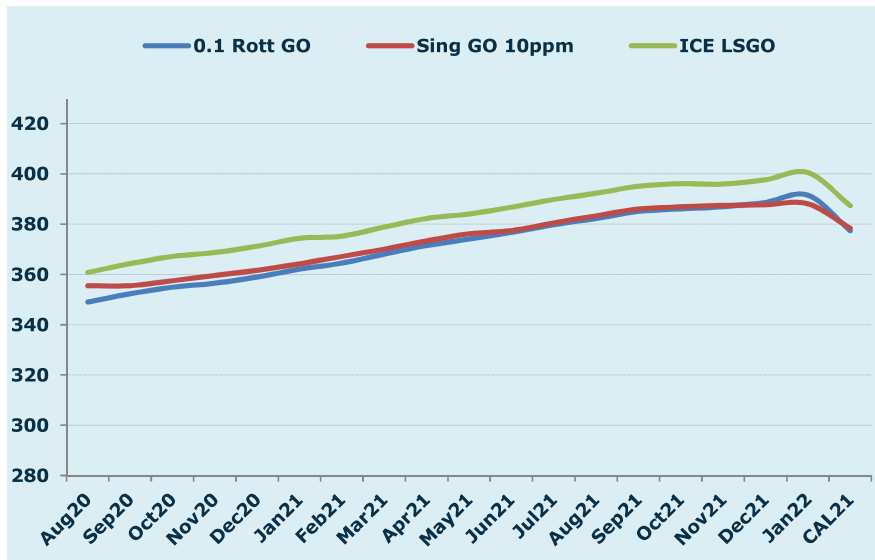
	Barges 3.5 %	Sing 380cst	Rott 0.5%	Sing 0.5%
Aug20/Sep20	2.75	-0.75	-4.00	-5.00
Sep20/Oct20	1.75	-1.00	-3.50	-4.50
Oct20/Nov20	0.00	-0.75	-3.25	-4.50
Nov20/Dec20	-1.00	-1.50	-3.00	-4.00
Dec20/Jan21	-2.00	-1.75	-3.75	-3.75
Q4-20/Q1-21	-4.07	-3.92	-9.76	-11.48
Q1-21/Q2-21	-3.58	-2.58	-7.83	-8.67
Q2-21/Q3-21	-2.50	-2.75	-7.00	-6.75
CAL21/CAL22	-14.50	-17.75	-14.5	-24.75

GASOIL CURVES

	Rott 0.1	SGO 10ppm	ICE GO
Aug20	349.0	355.5	360.8
Sep20	352.3	355.5	364.3
Oct20	354.9	357.5	367.2
Nov20	356.5	359.6	368.7
Dec20	359.0	361.7	371.2
Jan21	362.1	364.2	374.4
Q4-20	357.1	359.5	369.1
Q1-21	363.9	367.1	376.1
Q2-21	373.6	375.7	384.4
Q3-21	382.4	383.3	392.4
CAL21	377.4	378.4	387.4

EW SPREAD

	EW380	EW0.5%
Aug20	11.75	12.75
Sep20	15.25	13.75
Oct20	18.00	14.75
Nov20	18.75	16.00
Dec20	19.25	17.00
Jan21	19.00	17.00
Q4-20	18.65	15.95
Q1-21	18.50	17.67
Q2-21	17.50	18.50
Q3-21	17.75	18.25
CAL21	19.50	21.50
Jan-00	22.75	31.75



Luke Longhurst

Email: lukel@freightinvestor.com
 Mobile: (+44) 7966 968761

Chris Hudson

Email: chrish@freightinvestor.com
 Mobile: (+44) 7951 556947

Ricky Forman

Email: rickyf@freightinvestor.com
 Mobile: (+44) 7868 708719

The information provided in this communication is general in nature only and does not constitute advice in relation to investment products nor constitute any recommendation on our part. The information has been prepared without taking into account your investment objectives, financial situation or knowledge and experience. Freight Investor Services Limited is authorised and regulated by the Financial Conduct Authority (FRN 211452).

Risk Disclosure: Trading derivative products such as swaps, futures and options carries with it a substantial risk of loss. Transactional fees such as broker commission and clearing costs will be applied and these can vary depending on the type of product traded as well as the venue used for execution. These products are not suitable for all investors. For any further information or to discuss the use of these products please speak to your broker or relationship manager.