

FIS Fuel Oil Daily Evening Report

London +44 20 7090 1134 - info@freightinvestor.com | Singapore +65 6535 5189 - info@freightinvestor.asia | Shanghai +86 21 63012568

29 December 2020

Oil and Energy Market News

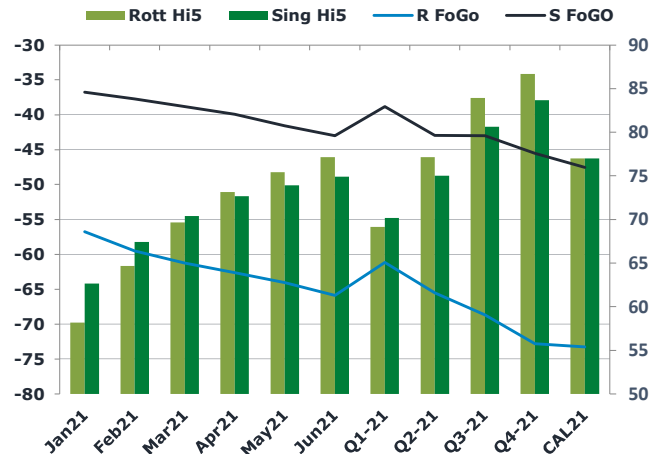
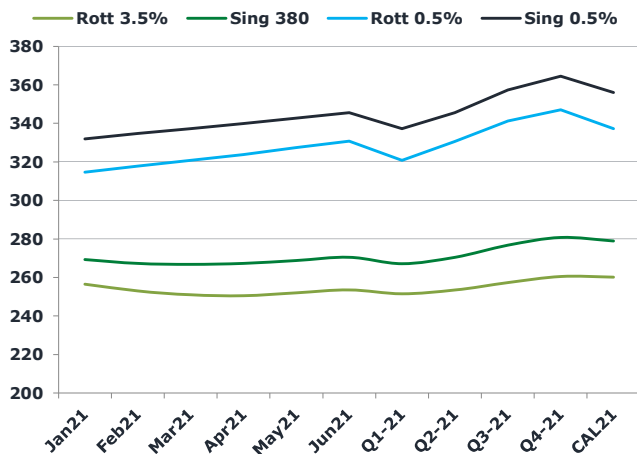
Brent crude oil front month futures ended the day up on Tuesday, printing \$51.29, up 43 cents or just over 0.8%. Highs in the day reached \$51.63 and lows touched \$50.93.

Oil was up this afternoon as it seemed to be underpinned by the hopes of a US stimulus package, with the House of representatives meeting to decide whether to meet the demands of Trump and his \$2,000 COVID-19 Relief Cheques, with stocks on track for a fourth straight session of gains. (Reuters)

Brent

51.29

	Barges 3.5 %	Sing 380cst	Rott 0.5%	Sing 0.5%	Sing Hi5
Jan21	286.50	302.25	370.92	390.92	89
Feb21	285.25	301.25	370.17	389.67	88
Mar21	283.75	300.25	369.67	388.92	89
Apr21	281.50	298.00	369.67	388.92	91
May21	278.75	295.50	369.67	388.92	93
Jun21	276.25	293.25	369.67	389.17	96
Q1-21	285.15	301.25	370.25	389.85	89
Q2-21	278.83	295.58	369.67	389.01	93
Q3-21	271.17	288.67	369.67	389.59	101
Q4-21	263.50	282.92	369.42	389.67	107
CAL21	275.15	293.90	372.15	391.90	98



Fuel Oil Market News

The front crack opened at -6.20 this morning and strengthened gradually through to the afternoon where it printed as high as -6.15, before ending the day at -6.25. The Cal 21 crack was valued at -7.75.

The Singapore FOGO ended the day trading at -34.25, with the Euro Fogo printing -56.5.

	Rott GOFO	Sing GOFO	R FoGo	S FoGo	Rott Hi5
Jan21	140.92	122.92	-56.50	-34.25	84
Feb21	144.23	124.22	-59.30	-35.80	85
Mar21	146.93	126.19	-61.00	-37.52	86
Apr21	150.28	129.41	-62.10	-38.49	88
May21	153.91	132.65	-62.99	-39.23	91
Jun21	157.71	138.63	-64.28	-42.71	93
Q1-21	144.05	124.45	-58.95	-35.85	85
Q2-21	153.97	133.56	-63.12	-40.14	91
Q3-21	165.31	145.25	-66.80	-44.32	99
Q4-21	175.22	152.34	-69.30	-45.58	106
CAL21	159.15	137.10	-62.15	-39.10	97

FIS Fuel Oil Daily Evening Report

London +44 20 7090 1134 - info@freightinvestor.com | Singapore +65 6535 5189 - info@freightinvestor.asia | Shanghai +86 21 63012568

29 December 2020

TIME SPREADS FUEL

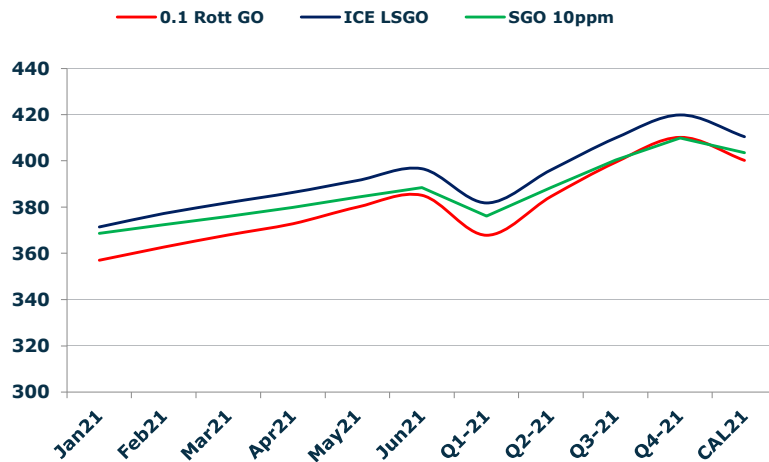
	Barges 3.5	S 380	Rott 0.5%	Sing 0.5%
Jan21/Feb21	1.25	1.00	0.75	1.25
Feb21/Mar21	1.50	1.00	0.50	0.75
Mar21/Apr21	2.25	2.25	0.00	0.00
Apr21/May21	2.75	2.50	0.00	0.00
May21/Jun21	2.50	2.25	0.00	-0.25
Q1-21/Q2-21	6.32	5.67	0.58	0.84
Q2-21/Q3-21	7.67	6.92	0.00	-0.58
Q3-21/Q4-21	7.67	5.75	0.25	-0.08
CAL21/CAL22	10.75	10.75	10.75	-3.75

GASOIL CURVES

	Rott 0.1	SGO 10ppm	ICE GO
Jan21	419.7	425.2	427.4
Feb21	421.5	425.5	429.5
Mar21	422.7	426.4	430.7
Apr21	423.3	427.4	431.8
May21	424.2	428.2	432.7
Jun21	425.5	431.9	434.0
Q1-21	420.7	425.7	429.2
Q2-21	424.5	429.1	432.8
Q3-21	428.5	433.9	436.5
Q4-21	431.5	435.3	438.7
CAL21	425.9	431.0	434.3

EW SPREAD

	EW380	EW0.5%
Jan21	15.75	20.00
Feb21	16.00	19.50
Mar21	16.50	19.25
Apr21	16.50	19.25
May21	16.75	19.25
Jun21	17.00	19.50
Q1-21	16.10	19.60
Q2-21	16.75	19.33
Q3-21	17.50	19.92
Q4-21	19.42	20.25
CAL21	18.75	19.75



Contact US:

Luke Longhurst

Email: lukel@freightinvestor.com

Mobile: (+44) 7966 968761

Jessie Deng

Email: jessied@freightinvestor.com

Mobile: (+86) 13524516743

Chris Hudson

Email: chrish@freightinvestor.com

Mobile: (+44) 7738 697750

Jarryd Smith

Email: jarryds@freightinvestor.com

Mobile: (+65) 8798 4987

Ricky Forman

Email: rickyf@freightinvestor.com

Mobile: (+44) 7868 708719

Sam Twyford

Email: samt@freightinvestor.com

Mobile: (+44) 7729 118643

The information provided in this communication is not intended for retail clients. It is general in nature only and does not constitute advice or an offer to sell, or the solicitation of an offer to purchase any swap or other financial instruments, nor constitute any recommendation on our part. The information has been prepared without considering your investment objectives, financial situation, or knowledge and experience. This material is not a research report and is not intended as such. FIS is not responsible for any trading decisions taken based on this communication. Trading swaps and over-the-counter derivatives, exchange-traded derivatives, and options involve substantial risk and are not suitable for all investors. You are advised to perform an independent investigation to determine whether a transaction is suitable for you. No part of this material may be copied or duplicated in any form by any means or redistributed without our prior written consent. Freight Investor Services Ltd (FIS) is authorised and regulated by the Financial Conduct Authority (FRN: 211452) and is a member of the National Futures Association ("NFA"). Freight Investor Services PTE Ltd ('FIS PTE') is a private limited company, incorporated and registered in Singapore with company number 200603922G, and has subsidiary offices in India and Shanghai. Freight Investor Solutions DMCC ('FIS DMCC') is a private limited company, incorporated and registered in Dubai with company number DMCC1225. Further information about FIS including the location of its offices can be found on our website at www.freightinvestorservices.com