



# Supramax & Handysize FFA Daily Report

London +44 20 7090 1120 - info@freightinvestor.com | Singapore +65 6535 5189 - info@freightinvestor.asia  
 Shanghai +86 21 6335 4002 | Dubai +971 4 4493900

18 February 2021

### Supramax Commentary

An active day for Supramax paper, with rates coming under pressure following the larger sizes. Despite a better than expected index, +\$1110, March and April traded to lows \$17200 and \$15850. Q2 and Q3 drifted to \$14500 and \$13300 respectively, with aggressive sells coming via panamax. failed to stop. We close supported at the day's lows. Have a nice evening.

### Handysize Commentary

Quiet day on handy paper and no reported trading amongst range bound levels.

### Supramax 10 Time Charter Average

Spot	15849	Chg	1110
MTD	13282		
YTD	12539		

### Handysize 6 Time Charter Average

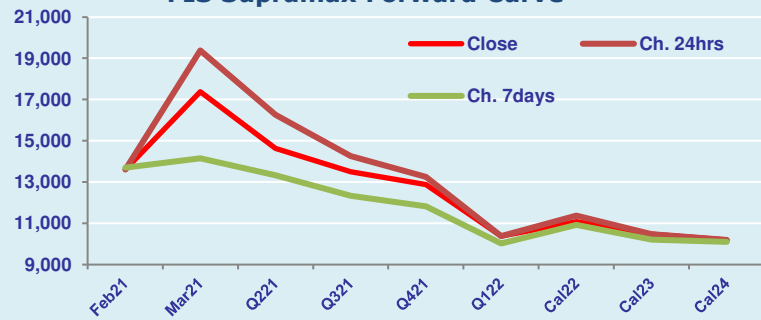
Spot	13233	Chg	793
MTD	11432		
YTD	10604		

### Spread Ratio

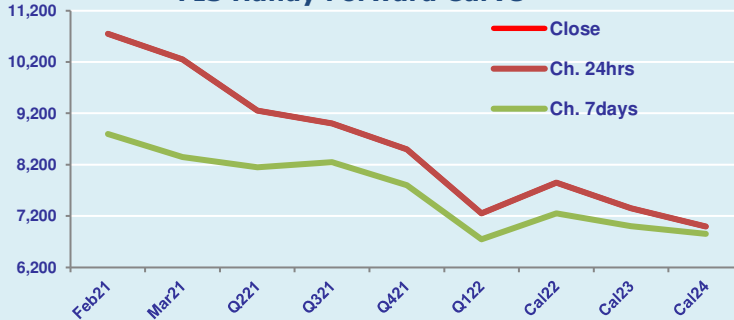
2616	1.20
1849	1.16
1935	1.18

Per	Bid	Offer	Mid	Chg	Per	Bid	Offer	Mid	Chg	Spread	Ratio
Feb 21	13400	13800	13600	0	Feb 21	10500	11000	10750	0	2850	1.27
Mar 21	17250	17500	17375	-2000	Mar 21	10000	10500	10250	0	7125	1.70
Q2 21	14500	14750	14625	-1625	Q2 21	9000	9500	9250	0	5375	1.58
Q3 21	13300	13700	13500	-750	Q3 21	8750	9250	9000	0	4500	1.50
Q4 21	12750	13000	12875	-375	Q4 21	8250	8750	8500	0	4375	1.51
Q1 22	10250	10500	10375	0	Q1 22	7000	7500	7250	0	3125	1.43
Cal 22	11000	11150	11075	-300	Cal 22	7600	8100	7850	0	3225	1.41
Cal 23	10400	10550	10475	0	Cal 23	7100	7600	7350	0	3125	1.43
Cal 24	10100	10300	10200	0	Cal 24	6750	7250	7000	0	3200	1.46

FIS Supramax Forward Curve



FIS Handy Forward Curve



Spot Price Source: Baltic

**Disclaimer:** The information provided in this communication is not intended for retail clients. It is general in nature only and does not constitute advice or an offer to sell, or the solicitation of an offer to purchase any swap or other financial instruments, nor constitute any recommendation on our part. The information has been prepared without considering your investment objectives, financial situation, or knowledge and experience. This material is not a research report and is not intended as such. FIS is not responsible for any trading decisions taken based on this communication. Trading swaps and over-the-counter derivatives, exchange-traded derivatives, and options involve substantial risk and are not suitable for all investors. You are advised to perform an independent investigation to determine whether a transaction is suitable for you. No part of this material may be copied or duplicated in any form by any means or redistributed without our prior written consent. Freight Investor Services Ltd (FIS) is authorised and regulated by the Financial Conduct Authority (FRN: 211452) and is a member of the National Futures Association ("NFA"). Freight Investor Services PTE Ltd ('FIS PTE') is a private limited company, incorporated and registered in Singapore with company number 200603922G, and has subsidiary offices in India and Shanghai. Freight Investor Solutions DMCC ('FIS DMCC') is a private limited company, incorporated and registered in Dubai with company number DMCC1225. Further information about FIS including the location of its offices can be found on our website at [www.freightinvestorservices.com](http://www.freightinvestorservices.com)