



# Supramax & Handysize FFA Daily Report

London +44 20 7090 1120 - info@freightinvestor.com | Singapore +65 6535 5189 - info@freightinvestor.asia  
 Shanghai +86 21 6335 4002 | Dubai +971 4 4493900

25 March 2021

### Supramax Commentary

An active day for Supramax paper, with rates pushing across the curve following the larger sizes. Chasing a thin offerside, April and Q2 pushed to respective highs of \$22000 and \$20000. Q34 and Cal22 pushed to highs of \$15675 and \$13300. We close well supported across the curve.

### Handysize Commentary

Increased interest in handsize fails to materialise into liquidity as the market waits for 7TC to be listed (due 19th April).

### Supramax 10 Time Charter Average

Spot	22227	Chg	-694
MTD	22210		
YTD	16321		

### Handysize 7 Time Charter Average

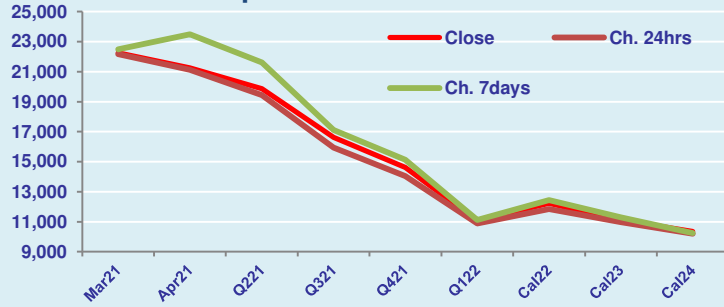
Spot	23183	Chg	-551
MTD	22306		
YTD	16246		

### Spread Ratio

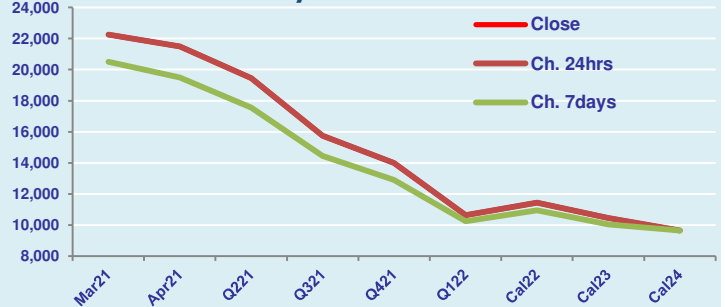
-956	0.96
-96	1.00
76	1.00

Per	Bid	Offer	Mid	Chg	Per	Bid	Offer	Mid	Chg	Spread	Ratio
Mar 21	22000	22500	22250	75	Mar 21	22000	22500	22250	0	0	1.00
Apr 21	21000	21500	21250	125	Apr 21	21250	21750	21500	0	-250	0.99
Q2 21	19750	20000	19875	425	Q2 21	19200	19700	19450	0	425	1.02
Q3 21	16500	16750	16625	675	Q3 21	15500	16000	15750	0	875	1.06
Q4 21	14500	14750	14625	575	Q4 21	13750	14250	14000	0	625	1.04
Q1 22	10950	11200	11075	200	Q1 22	10400	10900	10650	0	425	1.04
Cal 22	12100	12350	12225	375	Cal 22	11200	11700	11450	0	775	1.07
Cal 23	11000	11250	11125	150	Cal 23	10200	10700	10450	0	675	1.06
Cal 24	10250	10450	10350	150	Cal 24	9400	9900	9650	0	700	1.07

FIS Supramax Forward Curve



FIS Handy Forward Curve



Spot Price Source: Baltic

**Disclaimer:** The information provided in this communication is not intended for retail clients. It is general in nature only and does not constitute advice or an offer to sell, or the solicitation of an offer to purchase any swap or other financial instruments, nor constitute any recommendation on our part. The information has been prepared without considering your investment objectives, financial situation, or knowledge and experience. This material is not a research report and is not intended as such. FIS is not responsible for any trading decisions taken based on this communication. Trading swaps and over-the-counter derivatives, exchange-traded derivatives, and options involve substantial risk and are not suitable for all investors. You are advised to perform an independent investigation to determine whether a transaction is suitable for you. No part of this material may be copied or duplicated in any form by any means or redistributed without our prior written consent. Freight Investor Services Ltd (FIS) is authorised and regulated by the Financial Conduct Authority (FRN: 211452) and is a member of the National Futures Association ("NFA"). Freight Investor Services PTE Ltd ('FIS PTE') is a private limited company, incorporated and registered in Singapore with company number 200603922G, and has subsidiary offices in India and Shanghai. Freight Investor Solutions DMCC ('FIS DMCC') is a private limited company, incorporated and registered in Dubai with company number DMCC1225. Further information about FIS including the location of its offices can be found on our website at [www.freightinvestorservices.com](http://www.freightinvestorservices.com)

For more information on additional trading opportunities with FIS please visit [freightinvestorservices.com](http://freightinvestorservices.com)