

FIS Oil and Ore Intraday Morning Technical

info@freightinvestor.com | www.freightinvestorservices.com | (+44) 207 090 1120

Brent Dec 21 Morning Technical Comment – 240 Min



Support		Resistance		Current Price	Bull	Bear
S1	82.29	R1	83.88	82.27	RSI above 50	Chart source Bloomberg
S2	81.22	R2	85.62			
S3	80.53	R3	87.83			

Synopsis - Intraday

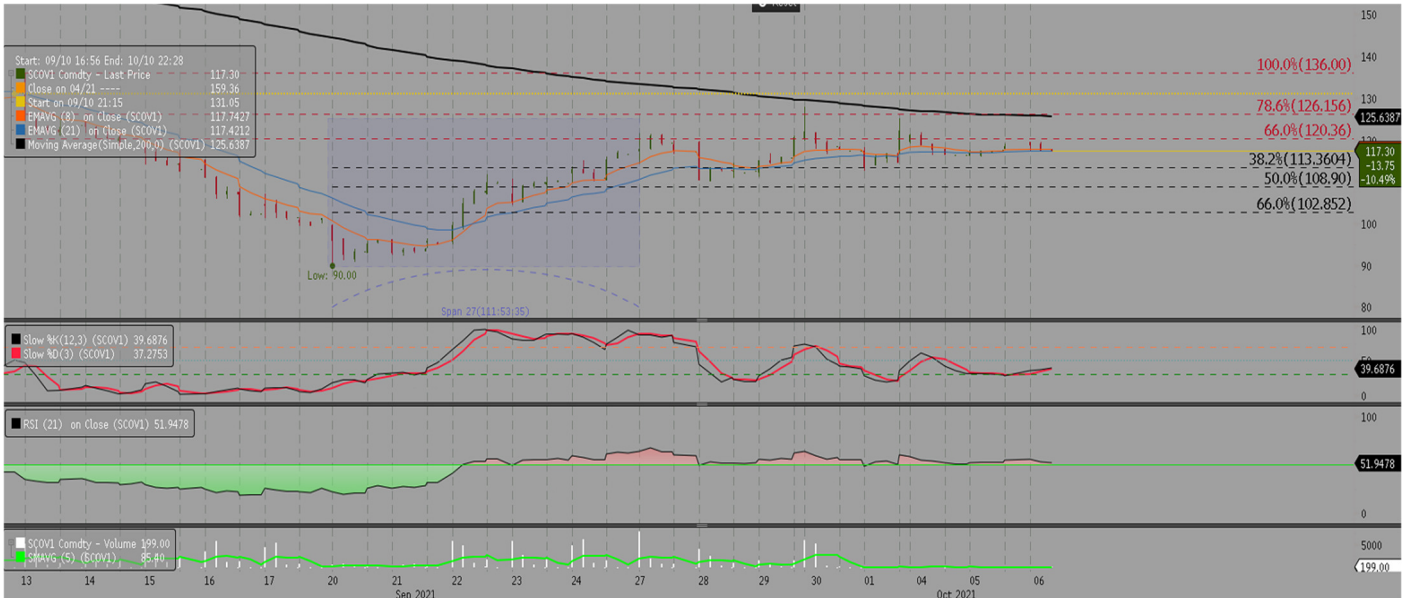
- Price is above the 8—21 period EMA's
- RSI is above 50 (55)
- Stochastic is oversold
- Price is above the daily pivot point USD 82.29
- The futures continue to make new highs with price holding in a bullish trending environment. Price is above all key moving averages supported by the RSI above 50
- Corrective moves that hold at or above USD 79.59 will support a bull argument, below this level the pullback will be deep into the last bull wave, meaning the technical phase will be considered as neutral/bullish
- The RSI is holding above 50 with the stochastic in oversold territory, if the RSI can hold above 50 then momentum is warning that the technical is vulnerable to a test to the upside
- Intraday wave analysis would suggest that corrective moves lower should be considered as countertrend
- Technically bullish an in trend, the futures are moving lower but momentum is warning that support levels should hold.

The information provided in this communication is not intended for retail clients. It is general in nature only and does not constitute advice or an offer to sell, or the solicitation of an offer to purchase any swap or other financial instruments, nor constitute any recommendation on our part. The information has been prepared without considering your investment objectives, financial situation, or knowledge and experience. This material is not a research report and is not intended as such. FIS is not responsible for any trading decisions taken based on this communication. Trading swaps and over-the-counter derivatives, exchange-traded derivatives, and options involve substantial risk and are not suitable for all investors. You are advised to perform an independent investigation to determine whether a transaction is suitable for you. No part of this material may be copied or duplicated in any form by any means or redistributed without our prior written consent. Freight Investor Services Ltd (FIS) is authorised and regulated by the Financial Conduct Authority (FRN: 211452) and is a member of the National Futures Association ("NFA"). Freight Investor Services PTE Ltd ('FIS PTE') is a private limited company, incorporated and registered in Singapore with company number 200603922G, and has subsidiary offices in India and Shanghai. Freight Investor Solutions DMCC ('FIS DMCC') is a private limited company, incorporated and registered in Dubai with company number DMCC1225. Further information about FIS including the location of its offices can be found on our website at www.freightinvestorservices.com

FIS Oil and Ore Intraday Morning Technical

info@freightinvestor.com | www.freightinvestorservices.com | (+44) 207 090 1120

Iron Ore Offshore Oct 21 Morning Technical Comment – 240 Min Chart (rolling contract)



Support		Resistance		Current Price	Bull	Bear
S1	115.20	R1	120.36	117.30	Stochastic oversold	RSI below 50
S2	113.36	R2	126.16			
S3	108.90	R3	136.00			

Synopsis - Intraday

Chart source Bloomberg

- No Technical today due to Golden Week