



Supramax & Handysize FFA Daily Report

London +44 20 7090 1120 - info@freightinvestor.com | Singapore +65 6535 5189 - info@freightinvestor.asia
 Shanghai +86 21 6335 4002 | Dubai +971 4 4493900

18 November 2021

Supramax Commentary

Supramax paper rates pushed across the curve following the larger sizes. Chasing a thin offerside Dec and Q1 pushed to respective highs of \$23500 and \$19500. The backend made up most of the day's volume, with Cal22 and Cal23 trading to highs of \$18300 and \$12750. We close supported across the curve. Have a nice evening.

Handysize Commentary

A quiet day for Handysize with no reported trades.

Supramax 10 Time Charter Average

Spot	24725	Chg	-138
MTD	26776		
YTD	26814		

Handysize 7 Time Charter Average

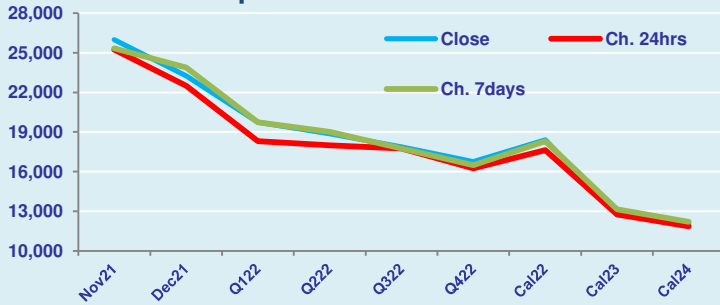
Spot	28307	Chg	-167
MTD	30522		
YTD	25458		

Spread Ratio

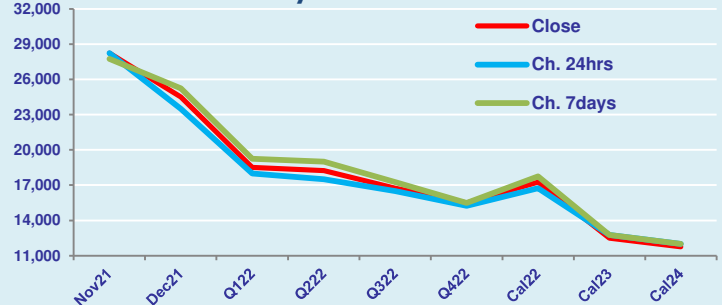
Spread	-3582	Ratio	0.87
	-3746		0.88
	1356		1.05

Per	Bid	Offer	Mid	Chg	Per	Bid	Offer	Mid	Chg	Spread	Ratio
Nov 21	25750	26250	26000	750	Nov 21	28000	28500	28250	0	-2250	0.92
Dec 21	23000	23500	23250	750	Dec 21	24250	24750	24500	1000	-1250	0.95
Q1 22	19500	20000	19750	1450	Q1 22	18250	18750	18500	500	1250	1.07
Q2 22	18750	19000	18875	875	Q2 22	18000	18500	18250	750	625	1.03
Q3 22	17750	18000	17875	125	Q3 22	16500	17000	16750	250	1125	1.07
Q4 22	16500	17000	16750	500	Q4 22	15250	15750	15500	250	1250	1.08
Cal 22	18300	18500	18400	775	Cal 22	17000	17500	17250	500	1150	1.07
Cal 23	12500	13000	12750	0	Cal 23	12250	12750	12500	-250	250	1.02
Cal 24	11975	12200	12088	213	Cal 24	11500	12000	11750	-250	338	1.03

FIS Supramax Forward Curve



FIS Handy Forward Curve



Spot Price Source: Baltic

Disclaimer: The information provided in this communication is not intended for retail clients. It is general in nature only and does not constitute advice or an offer to sell, or the solicitation of an offer to purchase any swap or other financial instruments, nor constitute any recommendation on our part. The information has been prepared without considering your investment objectives, financial situation, or knowledge and experience. This material is not a research report and is not intended as such. FIS is not responsible for any trading decisions taken based on this communication. Trading swaps and over-the-counter derivatives, exchange-traded derivatives, and options involve substantial risk and are not suitable for all investors. You are advised to perform an independent investigation to determine whether a transaction is suitable for you. No part of this material may be copied or duplicated in any form by any means or redistributed without our prior written consent. Freight Investor Services Ltd (FIS) is authorised and regulated by the Financial Conduct Authority (FRN: 211452) and is a member of the National Futures Association ("NFA"). Freight Investor Services PTE Ltd ("FIS PTE") is a private limited company, incorporated and registered in Singapore with company number 200603922G, and has subsidiary offices in India and Shanghai. Freight Investor Solutions DMCC ("FIS DMCC") is a private limited company, incorporated and registered in Dubai with company number DMCC1225. Further information about FIS including the location of its offices can be found on our website at www.freightinvestorservices.com