



London Iron Ore Market Report

London +44 (0) 20 7090 1120 - info@freightinvestor.com | Singapore +65 6535 5189 - info@freightinvestor.asia

15 December 2021

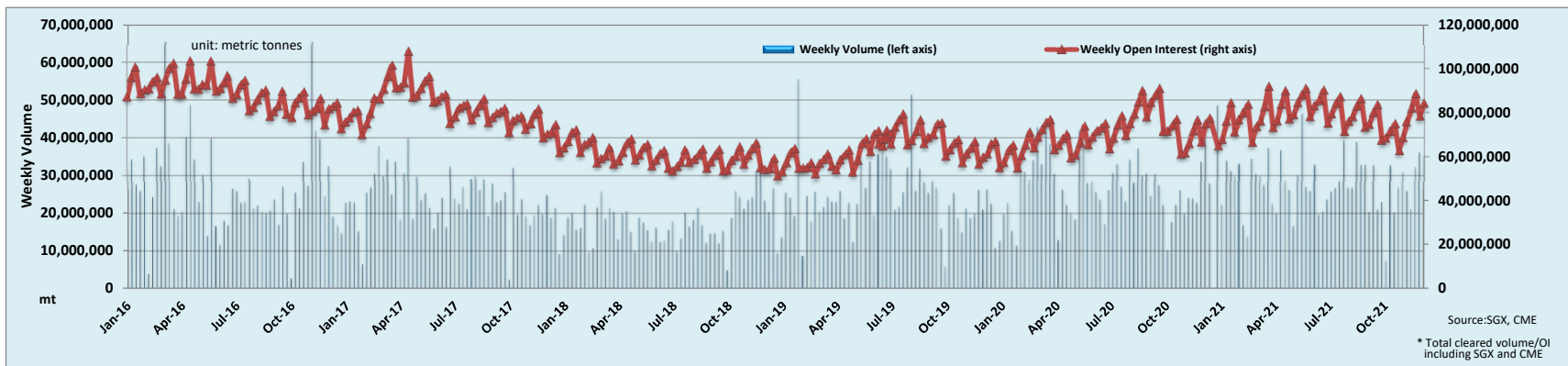
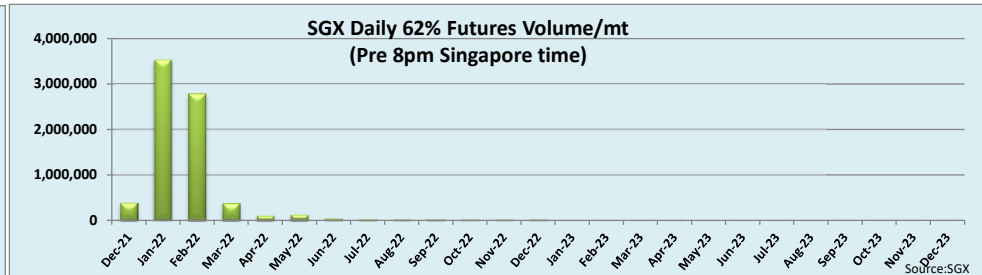
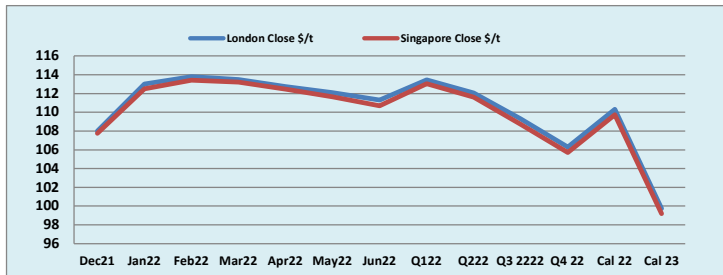
T+1 saw prices climb steadily over the first half of the session before retreating in a steady and gradual manner to close at modest losses. Trading however was rather varied in the contracts traded, as Cal22 was seen twice, early on and late on in the session.

INDEX	Price	Change	MTD
Platts IO 62%	\$109.70	\$1.45	\$104.70

INDEX	Price	Change	MTD
MB IO 65%	\$127.30	\$0.40	\$123.15

INDEX	Price	Change	MTD
Platts Lump Prem	\$0.1350	\$0.0000	\$0.1356

Iron Ore 62% Futures	Dec 21	Jan 22	Feb 22	Mar 22	Apr 22	May 22	Jun 22	Q1 22	Q2 22	Q3 22 22	Q4 22	Cal 22	Cal 23
London Close \$/t	108.00	113.00	113.80	113.50	112.75	112.10	111.30	113.45	112.05	109.30	106.30	110.30	99.75
Singapore Close \$/t	107.75	112.50	113.40	113.20	112.45	111.65	110.70	113.05	111.60	108.70	105.70	109.75	99.20
Change	+0.23%	+0.44%	+0.35%	+0.27%	+0.27%	+0.40%	+0.54%	+0.35%	+0.40%	+0.55%	+0.57%	+0.50%	+0.55%



Disclaimer: The information provided in this communication is not intended for retail clients. It is general in nature only and does not constitute advice or an offer to sell, or the solicitation of an offer to purchase any swap or other financial instruments, nor constitute any recommendation on our part. The information has been prepared without considering your investment objectives, financial situation, or knowledge and experience. This material is not a research report and is not intended as such. FIS is not responsible for any trading decisions taken based on this communication. Trading swaps and over-the-counter derivatives, exchange-traded derivatives, and options involve substantial risk and are not suitable for all investors. You are advised to perform an independent investigation to determine whether a transaction is suitable for you. No part of this material may be copied or duplicated in any form by any means or redistributed without our prior written consent. Freight Investor Services Ltd (FIS) is authorised and regulated by the Financial Conduct Authority (FRN: 211452) and is a member of the National Futures Association ("NFA"). Freight Investor Services PTE Ltd ('FIS PTE') is a private limited company, incorporated and registered in Singapore with company number 200603922G, and has subsidiary offices in India and Shanghai. Freight Investor Solutions DMCC ('FIS DMCC') is a private limited company, incorporated and registered in Dubai with company number DMCC1225. Further information about FIS including the location of its offices can be found on our website at www.freightinvestorservices.com