



# Supramax & Handysize FFA Daily Report

London +44 20 7090 1120 - info@freightinvestor.com | Singapore +65 6535 5189 - info@freightinvestor.asia  
 Shanghai +86 21 6335 4002 | Dubai +971 4 4493900

15 December 2021

### Supramax Commentary

A quiet day for Supramax paper, with rates drifting in small volume through the morning session before ticking back up at the close. Cal22 made up most of the day's volume again, trading \$20000-\$20150. We close supported across the curve. Have a nice evening.

### Handysize Commentary

A quiet day for Handysize with no reported trades.

### Supramax 10 Time Charter Average

Spot	27960	Chg	-91
MTD	27404		
YTD	26784		

### Handysize 7 Time Charter Average

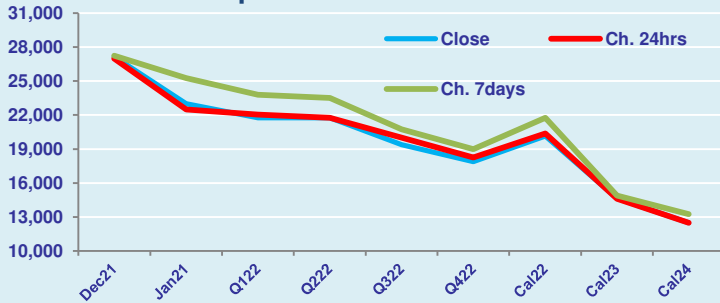
Spot	28159	Chg	-24
MTD	28152		
YTD	25656		

### Spread Ratio

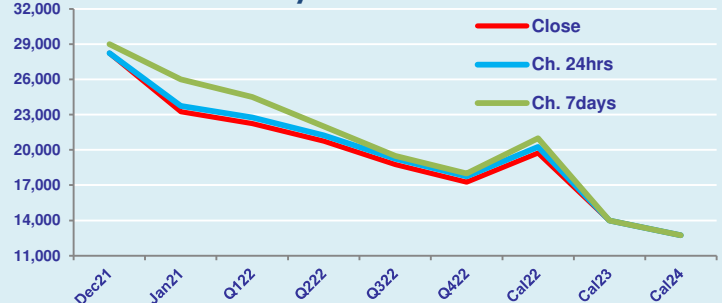
Spread	-199	Ratio	0.99
	-748		0.97
	1128		1.04

Per	Bid	Offer	Mid	Chg	Per	Bid	Offer	Mid	Chg	Spread	Ratio
Dec 21	27050	27250	27150	150	Dec 21	28000	28500	28250	0	-1100	0.96
Jan 21	22750	23250	23000	500	Jan 21	23000	23500	23250	-500	-250	0.99
Q1 22	21500	22000	21750	-300	Q1 22	22000	22500	22250	-500	-500	0.98
Q2 22	21500	22000	21750	0	Q2 22	20500	21000	20750	-500	1000	1.05
Q3 22	19250	19500	19375	-625	Q3 22	18500	19000	18750	-500	625	1.03
Q4 22	17750	18000	17875	-375	Q4 22	17000	17500	17250	-500	625	1.04
Cal 22	20050	20250	20150	-225	Cal 22	19500	20000	19750	-500	400	1.02
Cal 23	14500	14750	14625	25	Cal 23	13750	14250	14000	0	625	1.04
Cal 24	12250	12750	12500	0	Cal 24	12500	13000	12750	0	-250	0.98

FIS Supramax Forward Curve



FIS Handy Forward Curve



Spot Price Source: Baltic

Disclaimer: The information provided in this communication is not intended for retail clients. It is general in nature only and does not constitute advice or an offer to sell, or the solicitation of an offer to purchase any swap or other financial instruments, nor constitute any recommendation on our part. The information has been prepared without considering your investment objectives, financial situation, or knowledge and experience. This material is not a research report and is not intended as such. FIS is not responsible for any trading decisions taken based on this communication. Trading swaps and over-the-counter derivatives, exchange-traded derivatives, and options involve substantial risk and are not suitable for all investors. You are advised to perform an independent investigation to determine whether a transaction is suitable for you. No part of this material may be copied or duplicated in any form by any means or redistributed without our prior written consent. Freight Investor Services Ltd (FIS) is authorised and regulated by the Financial Conduct Authority (FRN: 211452) and is a member of the National Futures Association ("NFA"). Freight Investor Services PTE Ltd ("FIS PTE") is a private limited company, incorporated and registered in Singapore with company number 200603922G, and has subsidiary offices in India and Shanghai. Freight Investor Solutions DMCC ("FIS DMCC") is a private limited company, incorporated and registered in Dubai with company number DMCC1225. Further information about FIS including the location of its offices can be found on our website at [www.freightinvestorservices.com](http://www.freightinvestorservices.com)