



# Supramax & Handysize FFA Daily Report

London +44 20 7090 1120 - info@freightinvestor.com | Singapore +65 6535 5189 - info@freightinvestor.asia  
 Shanghai +86 21 6335 4002 | Dubai +971 4 4493900

06 January 2022

### Supramax Commentary

Supramax paper rates softened slightly, with Jan opening \$22000 before retracing through the day to \$22500 high. Cal22 slipped to \$21550, with aggressive offers coming spread against Panamax. We close supported over the lows of the day, across the curve. Have a nice evening.

### Handysize Commentary

A quiet day for Handysize paper with no reported trades.

### Supramax 10 Time Charter Average

Spot	23365	Chg	-450
MTD	23828		
YTD	23828		

### Handysize 7 Time Charter Average

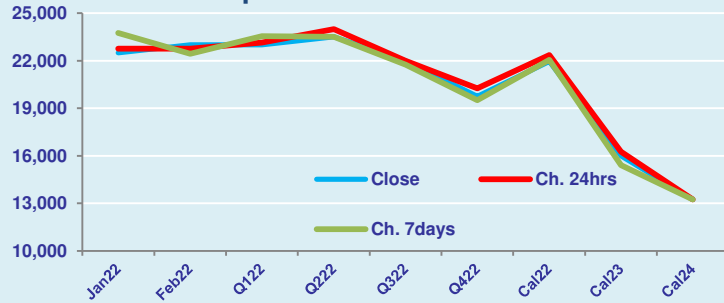
Spot	24024	Chg	-943
MTD	24771		
YTD	24771		

### Spread Ratio

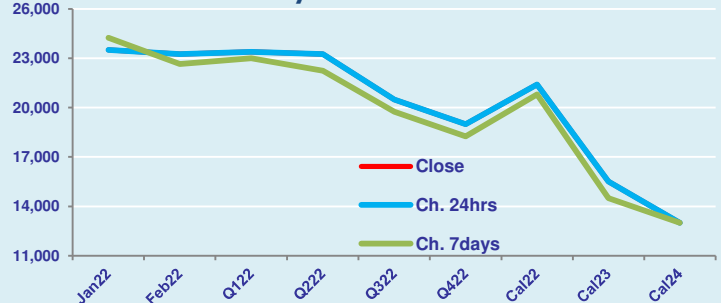
Spread	-659	Ratio	0.97
	-943		0.96
	-943		0.96

Per	Bid	Offer	Mid	Chg	Per	Bid	Offer	Mid	Chg	Spread	Ratio
Jan 22	22250	22750	22500	-250	Jan 22	23250	23750	23500	0	-1000	0.96
Feb 22	22750	23250	23000	250	Feb 22	23000	23500	23250	0	-250	0.99
Q1 22	22750	23250	23000	-150	Q1 22	23200	23600	23400	0	-400	0.98
Q2 22	23250	23750	23500	-500	Q2 22	23000	23500	23250	0	250	1.01
Q3 22	21750	22250	22000	0	Q3 22	20250	20750	20500	0	1500	1.07
Q4 22	19500	20000	19750	-500	Q4 22	18750	19250	19000	0	750	1.04
Cal 22	21800	22100	21950	-400	Cal 22	21200	21600	21400	0	550	1.03
Cal 23	15750	16250	16000	-250	Cal 23	15250	15750	15500	0	500	1.03
Cal 24	13000	13500	13250	0	Cal 24	12750	13250	13000	0	250	1.02

FIS Supramax Forward Curve



FIS Handy Forward Curve



Spot Price Source: Baltic

Disclaimer: The information provided in this communication is not intended for retail clients. It is general in nature only and does not constitute advice or an offer to sell, or the solicitation of an offer to purchase any swap or other financial instruments, nor constitute any recommendation on our part. The information has been prepared without considering your investment objectives, financial situation, or knowledge and experience. This material is not a research report and is not intended as such. FIS is not responsible for any trading decisions taken based on this communication. Trading swaps and over-the-counter derivatives, exchange-traded derivatives, and options involve substantial risk and are not suitable for all investors. You are advised to perform an independent investigation to determine whether a transaction is suitable for you. No part of this material may be copied or duplicated in any form by any means or redistributed without our prior written consent. Freight Investor Services Ltd (FIS) is authorised and regulated by the Financial Conduct Authority (FRN: 211452) and is a member of the National Futures Association ("NFA"). Freight Investor Services PTE Ltd ("FIS PTE") is a private limited company, incorporated and registered in Singapore with company number 200603922G, and has subsidiary offices in India and Shanghai. Freight Investor Solutions DMCC ("FIS DMCC") is a private limited company, incorporated and registered in Dubai with company number DMCC1225. Further information about FIS including the location of its offices can be found on our website at [www.freightinvestorservices.com](http://www.freightinvestorservices.com)