



# Supramax & Handysize FFA Daily Report

London +44 20 7090 1120 - info@freightinvestor.com | Singapore +65 6535 5189 - info@freightinvestor.asia  
 Shanghai +86 21 6335 4002 | Dubai +971 4 4493900

01 February 2022

### Supramax Commentary

Another quiet day for Supramax paper, with a limited numbers of trades. Rates remained rangebound, with March and Q2 making up most of the day's volume trading around \$23000 and \$24000 respectively. We close with bid support on the prompt. Have a nice evening.

### Handysize Commentary

A quiet day on the handy front with no trades reported, 327 days left till Christmas. Good night.

### Supramax 10 Time Charter Average

Spot	17354	Chg	-107
MTD	17354		
YTD	20308		

### Handysize 7 Time Charter Average

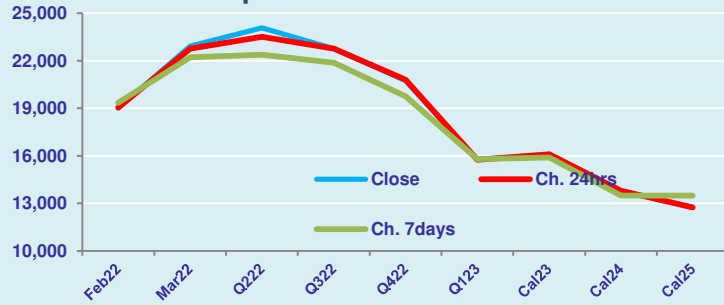
Spot	17914	Chg	-131
MTD	17914		
YTD	21001		

### Spread Ratio

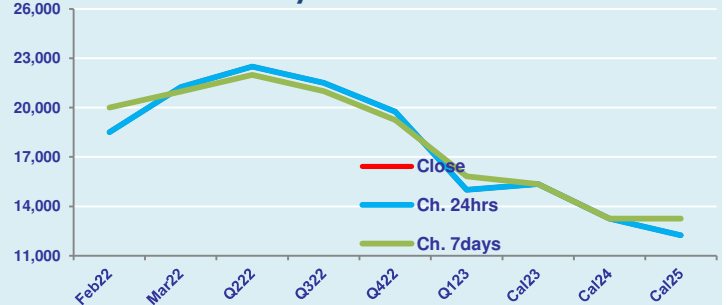
Spread	-560	Ratio	0.97
	-560		0.97
	-694		0.97

Per	Bid	Offer	Mid	Chg	Per	Bid	Offer	Mid	Chg	Spread	Ratio
Feb 22	18750	19250	19000	-50	Feb 22	18250	18750	18500	0	500	1.03
Mar 22	22800	23050	22925	175	Mar 22	21000	21500	21250	0	1675	1.08
Q2 22	24000	24150	24075	575	Q2 22	22250	22750	22500	0	1575	1.07
Q3 22	22500	23000	22750	0	Q3 22	21250	21750	21500	0	1250	1.06
Q4 22	20500	21000	20750	-50	Q4 22	19500	20000	19750	0	1000	1.05
Q1 23	15500	16000	15750	0	Q1 23	14750	15250	15000	0	750	1.05
Cal 23	15950	16250	16100	0	Cal 23	15200	15500	15350	0	750	1.05
Cal 24	13600	14000	13800	0	Cal 24	13000	13500	13250	0	550	1.04
Cal 25	12500	13000	12750	0	Cal 25	12000	12500	12250	0	500	1.04

FIS Supramax Forward Curve



FIS Handy Forward Curve



Spot Price Source: Baltic

Disclaimer: The information provided in this communication is not intended for retail clients. It is general in nature only and does not constitute advice or an offer to sell, or the solicitation of an offer to purchase any swap or other financial instruments, nor constitute any recommendation on our part. The information has been prepared without considering your investment objectives, financial situation, or knowledge and experience. This material is not a research report and is not intended as such. FIS is not responsible for any trading decisions taken based on this communication. Trading swaps and over-the-counter derivatives, exchange-traded derivatives, and options involve substantial risk and are not suitable for all investors. You are advised to perform an independent investigation to determine whether a transaction is suitable for you. No part of this material may be copied or duplicated in any form by any means or redistributed without our prior written consent. Freight Investor Services Ltd (FIS) is authorised and regulated by the Financial Conduct Authority (FRN: 211452) and is a member of the National Futures Association ("NFA"). Freight Investor Services PTE Ltd ("FIS PTE") is a private limited company, incorporated and registered in Singapore with company number 200603922G, and has subsidiary offices in India and Shanghai. Freight Investor Solutions DMCC ("FIS DMCC") is a private limited company, incorporated and registered in Dubai with company number DMCC1225. Further information about FIS including the location of its offices can be found on our website at [www.freightinvestorservices.com](http://www.freightinvestorservices.com)