



Fuel Oil Daily Evening Report

London +44 20 7090 1134 - info@freightinvestor.com | Singapore +65 6535 5189 - info@freightinvestor.asia | Shanghai +86 21 63012568

04 March 2022

Oil and Energy Market News

Brent is up 3.25% at the time of writing at \$114.02. The latest surge in oil prices, is quickly feeding through to prices at the pump. DailyNational Average Gasoline Price in the U.S. just had its biggest single day increase since 2005 — with a gain of over 10 cents. In just three days the move is 22 cents.

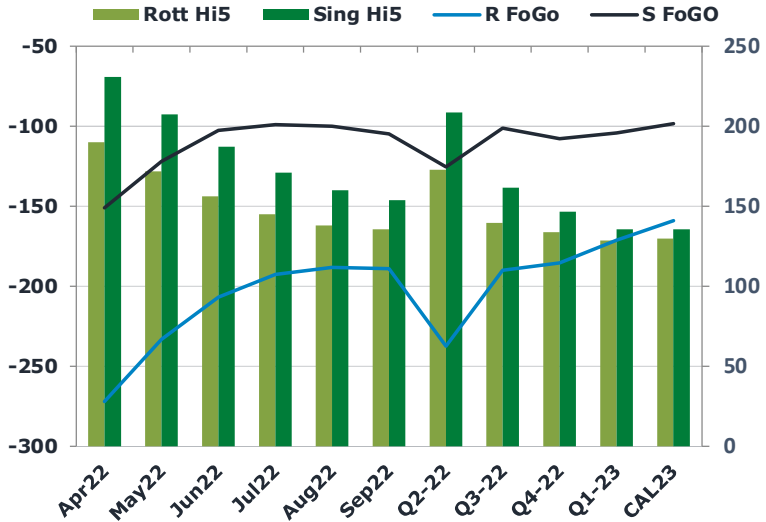
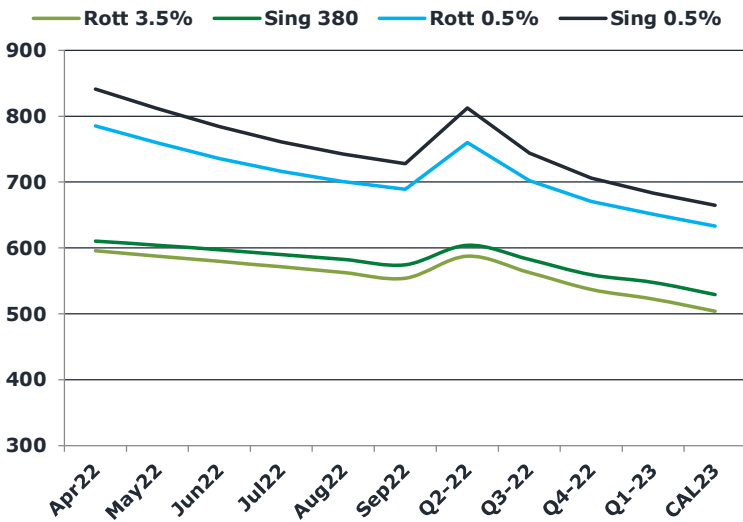
Wheat is the other big one. And as George Pearkes of Bespoke Investment Group notes, the nine-day move in wheat is the largest move in history by a long shot, with official measures going back decades.

Looks like the cost of living in 2022 just got more expensive and on that cheery note, i wish you all a great weekend.

Brent

114.27

	Barges 3.5 %	Sing 380cst	Rott 0.5%	Sing 0.5%	Sing Hi5
Apr22	595.60	610.60	785.45	841.35	231
May22	587.60	604.10	759.19	811.60	208
Jun22	579.60	597.35	735.69	784.60	187
Jul22	571.35	590.10	716.19	761.10	171
Aug22	562.85	582.60	700.69	742.60	160
Sep22	554.10	574.60	689.44	728.35	154
Q2-22	587.60	604.00	760.10	812.50	209
Q3-22	562.77	582.43	702.11	744.02	162
Q4-22	537.02	559.43	670.69	706.02	147
Q1-23	522.60	547.77	651.27	683.35	136
CAL23	503.77	529.18	633.40	664.68	136



Fuel Oil Market News

The Barges crack opened at -15.75 this morning and ended the day printing -16.5 although it did weaken to -17 at one point. The Cal 23 crack was valued at 10.50.

The Singapore 0.5% crack ended the day trading up at 22.10, with the Rott 0.5% crack printing 13.2 on both front months, respectively.

	Rott GOFO	Sing GOFO	R FoGo	S FoGo	Rott Hi5
Apr22	461.86	381.86	-272.00	-151.00	190
May22	404.86	329.50	-233.25	-122.00	172
Jun22	362.91	290.06	-206.75	-102.75	156
Jul22	337.34	270.12	-192.50	-99.00	145
Aug22	326.19	260.11	-188.25	-100.00	138
Sep22	324.24	258.43	-189.00	-104.75	135
Q2-22	409.90	333.96	-237.50	-125.50	173
Q3-22	329.26	262.89	-190.00	-101.25	139
Q4-22	319.17	254.23	-185.50	-107.75	134
Q1-23	300.03	239.82	-171.25	-104.25	129
CAL23	288.74	233.88	-159.00	-98.50	130

FIS

Fuel Oil Daily Evening Report

London +44 20 7090 1134 - info@freightinvestor.com | Singapore +65 6535 5189 - info@freightinvestor.asia | Shanghai +86 21 63012568

04 March 2022

TIME SPREADS FUEL

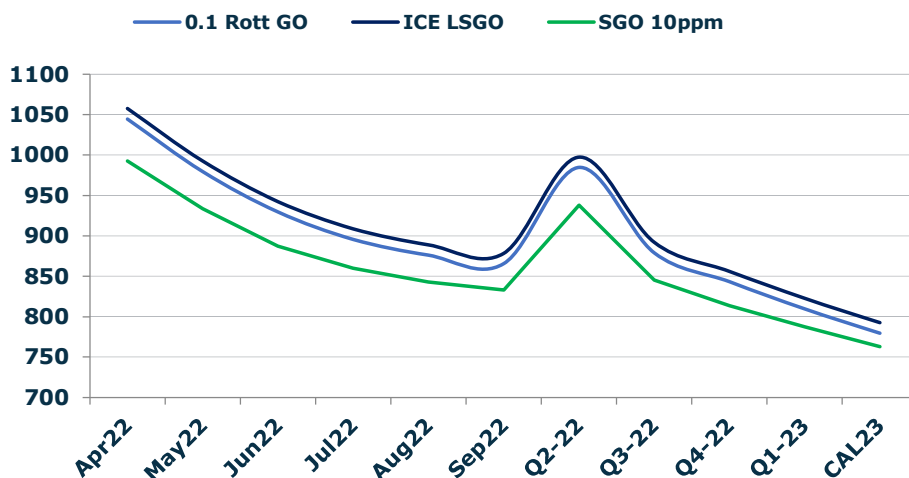
	Barges 3.5	S 380	Rott 0.5%	Sing 0.5%
Apr22/May22	8.00	6.50	26.26	29.75
May22/Jun22	8.00	6.75	23.50	27.00
Jun22/Jul22	8.25	7.25	19.50	23.50
Jul22/Aug22	8.50	7.50	15.50	18.50
Aug22/Sep22	8.75	8.00	11.25	14.25
Q2-22/Q3-22	24.83	21.57	57.99	68.48
Q3-22/Q4-22	25.75	23.00	31.42	38.00
Q4-22/Q1-23	14.42	11.67	19.42	22.67
CAL23/CAL24	27.75	34.00	37.4	49.50

GASOIL CURVES

	Rott 0.1	SGO 10ppm	ICE GO
Apr22	1044.5	992.5	1057.5
May22	979.5	933.6	992.5
Jun22	929.5	887.4	942.5
Jul22	895.7	860.2	908.7
Aug22	876.0	842.7	889.0
Sep22	865.3	833.0	878.3
Q2-22	984.5	938.0	997.5
Q3-22	879.0	845.3	892.0
Q4-22	843.2	813.7	856.2
Q1-23	809.6	787.6	822.6
CAL23	779.5	763.1	792.5

EW SPREAD

	EW380	EW0.5%
Apr22	15.00	55.90
May22	16.50	52.41
Jun22	17.75	48.91
Jul22	18.75	44.91
Aug22	19.75	41.91
Sep22	20.50	38.91
Q2-22	16.40	52.40
Q3-22	19.67	41.91
Q4-22	22.42	35.33
Q1-23	25.17	32.08
CAL23	24.00	31.29



Contact US:

Luke Longhurst

Email: lukel@freightinvestor.com

Mobile: (+44) 7966 968761

Ricky Forman

Email: rickyf@freightinvestor.com

Mobile: (+44) 7868 708719

Sam Twyford

Email: samt@freightinvestor.com

Mobile: (+44) 7729 118643

Jessie Deng

Email: jessied@freightinvestor.com

Mobile: (+86) 13524516743

Jarryd Smith

Email: jarryds@freightinvestor.com

Mobile: (+65) 8798 4987

The information provided in this communication is not intended for retail clients. It is general in nature only and does not constitute advice or an offer to sell, or the solicitation of an offer to purchase any swap or other financial instruments, nor constitute any recommendation on our part. The information has been prepared without considering your investment objectives, financial situation, or knowledge and experience. This material is not a research report and is not intended as such. FIS is not responsible for any trading decisions taken based on this communication. Trading swaps and over-the-counter derivatives, exchange-traded derivatives, and options involve substantial risk and are not suitable for all investors. You are advised to perform an independent investigation to determine whether a transaction is suitable for you. No part of this material may be copied or duplicated in any form by any means or redistributed without our prior written consent. Freight Investor Services Ltd (FIS) is authorised and regulated by the Financial Conduct Authority (FRN: 211452) and is a member of the National Futures Association ("NFA"). Freight Investor Services PTE Ltd ('FIS PTE') is a private limited company, incorporated and registered in Singapore with company number 200603922G, and has subsidiary offices in India and Shanghai. Freight Investor Solutions DMCC ('FIS DMCC') is a private limited company, incorporated and registered in Dubai with company number DMCC1225. Further information about FIS including the location of its offices can be found on our website at freightinvestorservices.com