

FIS Fuel Oil Daily Evening Report

London +44 20 7090 1134 - info@freightinvestor.com | Singapore +65 6535 5189 - info@freightinvestor.asia | Shanghai +86 21 63012568

09 March 2022

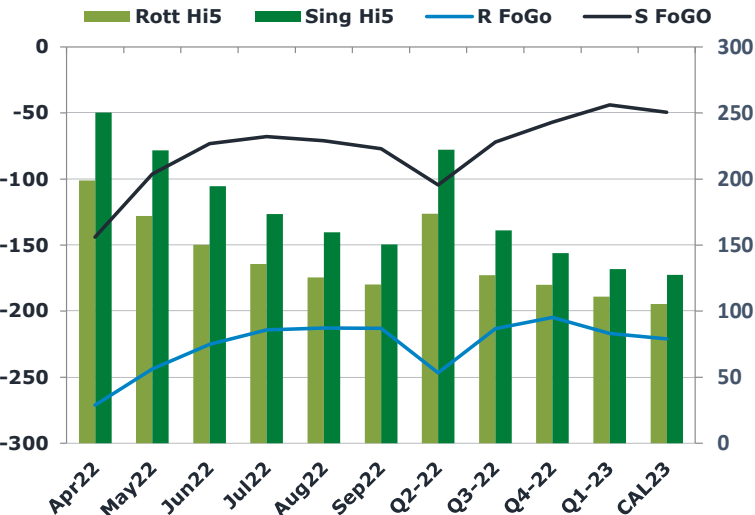
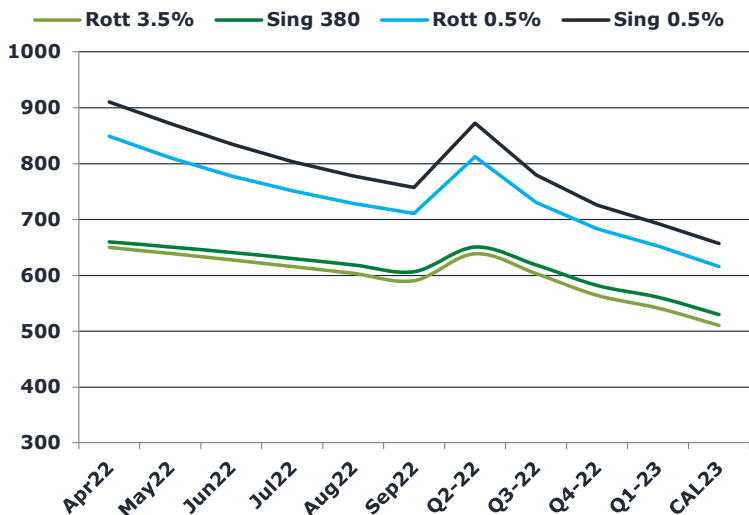
Oil and Energy Market News

Brent crude oil front month futures ended the day down 4.6% printing \$124.71 at 1630BST. Highs in the day reached \$131.64 and lows touched \$120.04

Brent

122.77

	Barges 3.5 %	Sing 380cst	Rott 0.5%	Sing 0.5%	Sing Hi5
Apr22	649.85	659.85	848.90	910.20	250
May22	638.85	650.60	810.90	872.20	222
Jun22	627.60	640.85	777.90	835.45	195
Jul22	615.60	630.10	751.40	803.70	174
Aug22	603.35	618.60	728.90	778.20	160
Sep22	590.35	606.60	710.65	757.20	151
Q2-22	638.75	650.45	812.55	872.60	222
Q3-22	603.10	618.43	730.32	779.70	161
Q4-22	563.68	581.77	683.65	725.78	144
Q1-23	541.18	560.43	652.23	692.28	132
CAL23	509.81	529.39	615.36	656.85	127



Fuel Oil Market News

The Barges crack opened at -15.75 this morning and ended the day printing -15.25. The Cal 23 crack was valued at 10.50.

The Singapore 0.5% crack ended the day trading up at 25.75, with the Rott 0.5% crack printing 16.1 on both front months, respectively.

	Rott GOFO	Sing GOFO	R FoGo	S FoGO	Rott Hi5
Apr22	470.23	394.23	-271.25	-144.00	199
May22	415.82	317.81	-243.75	-96.25	172
Jun22	375.22	267.96	-225.00	-73.25	150
Jul22	350.07	241.46	-214.25	-67.75	136
Aug22	338.36	230.61	-212.75	-71.00	126
Sep22	333.32	227.71	-213.00	-77.00	120
Q2-22	420.45	326.62	-246.75	-104.50	174
Q3-22	340.58	233.26	-213.25	-72.00	127
Q4-22	324.59	201.14	-204.75	-57.00	120
Q1-23	327.76	175.78	-216.75	-44.00	111
CAL23	326.62	177.03	-221.00	-49.50	106

FIS Fuel Oil Daily Evening Report

London +44 20 7090 1134 - info@freightinvestor.com | Singapore +65 6535 5189 - info@freightinvestor.asia | Shanghai +86 21 63012568

09 March 2022

TIME SPREADS FUEL

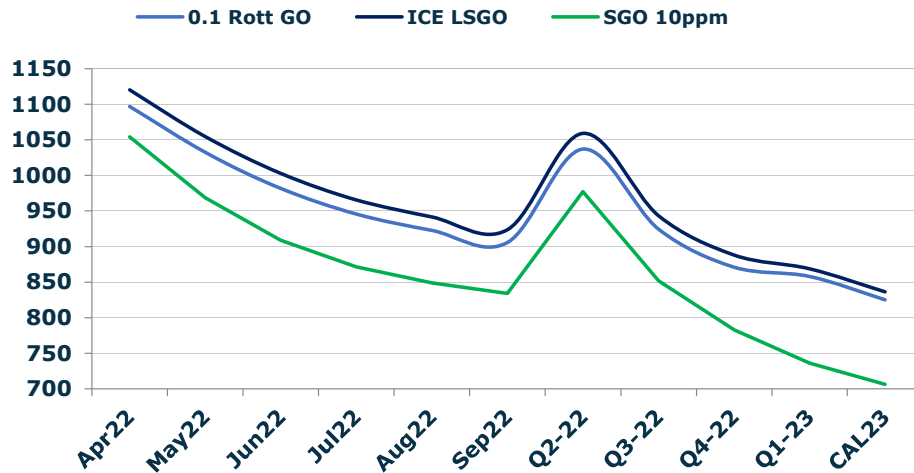
	Barges 3.5	S 380	Rott 0.5%	Sing 0.5%
Apr22/May22	11.00	9.25	38.00	38.00
May22/Jun22	11.25	9.75	33.00	36.75
Jun22/Jul22	12.00	10.75	26.50	31.75
Jul22/Aug22	12.25	11.50	22.50	25.50
Aug22/Sep22	13.00	12.00	18.25	21.00
Q2-22/Q3-22	35.65	32.02	82.23	92.90
Q3-22/Q4-22	39.42	36.67	46.67	53.92
Q4-22/Q1-23	22.50	21.33	31.42	33.50
CAL23/CAL24	45.00	43.25	30.5	50.70

GASOIL CURVES

	Rott 0.1	SGO 10ppm	ICE GO
Apr22	1097.1	1054.1	1120.1
May22	1032.7	968.4	1054.7
Jun22	981.8	908.8	1002.8
Jul22	945.7	871.6	965.7
Aug22	922.7	849.2	941.7
Sep22	905.7	834.3	923.7
Q2-22	1037.2	977.1	1059.2
Q3-22	924.7	851.7	943.7
Q4-22	871.3	782.9	888.3
Q1-23	857.9	736.2	868.9
CAL23	825.4	706.4	836.4

EW SPREAD

	EW380	EW0.5%
Apr22	10.00	61.30
May22	11.75	61.30
Jun22	13.25	57.55
Jul22	14.50	52.30
Aug22	15.25	49.30
Sep22	16.25	46.55
Q2-22	11.70	60.05
Q3-22	15.33	49.38
Q4-22	18.08	42.13
Q1-23	19.25	40.05
CAL23	24.00	41.49



Contact US:

Luke Longhurst

Email: lukel@freightinvestor.com

Mobile: (+44) 7966 968761

Ricky Forman

Email: rickyf@freightinvestor.com

Mobile: (+44) 7868 708719

Sam Twyford

Email: samt@freightinvestor.com

Mobile: (+44) 7729 118643

Jessie Deng

Email: jessied@freightinvestor.com

Mobile: (+86) 13524516743

Jarryd Smith

Email: jarryds@freightinvestor.com

Mobile: (+65) 8798 4987

The information provided in this communication is not intended for retail clients. It is general in nature only and does not constitute advice or an offer to sell, or the solicitation of an offer to purchase any swap or other financial instruments, nor constitute any recommendation on our part. The information has been prepared without considering your investment objectives, financial situation, or knowledge and experience. This material is not a research report and is not intended as such. FIS is not responsible for any trading decisions taken based on this communication. Trading swaps and over-the-counter derivatives, exchange-traded derivatives, and options involve substantial risk and are not suitable for all investors. You are advised to perform an independent investigation to determine whether a transaction is suitable for you. No part of this material may be copied or duplicated in any form by any means or redistributed without our prior written consent. Freight Investor Services Ltd (FIS) is authorised and regulated by the Financial Conduct Authority (FRN: 211452) and is a member of the National Futures Association ("NFA"). Freight Investor Services PTE Ltd ('FIS PTE') is a private limited company, incorporated and registered in Singapore with company number 200603922G, and has subsidiary offices in India and Shanghai. Freight Investor Solutions DMCC ('FIS DMCC') is a private limited company, incorporated and registered in Dubai with company number DMCC1225. Further information about FIS including the location of its offices can be found on our website at freightinvestorservices.com