



# Fuel Oil Daily Evening Report

London +44 20 7090 1134 - info@freightinvestor.com | Singapore +65 6535 5189 - info@freightinvestor.asia | Shanghai +86 21 63012568

## 16 March 2022

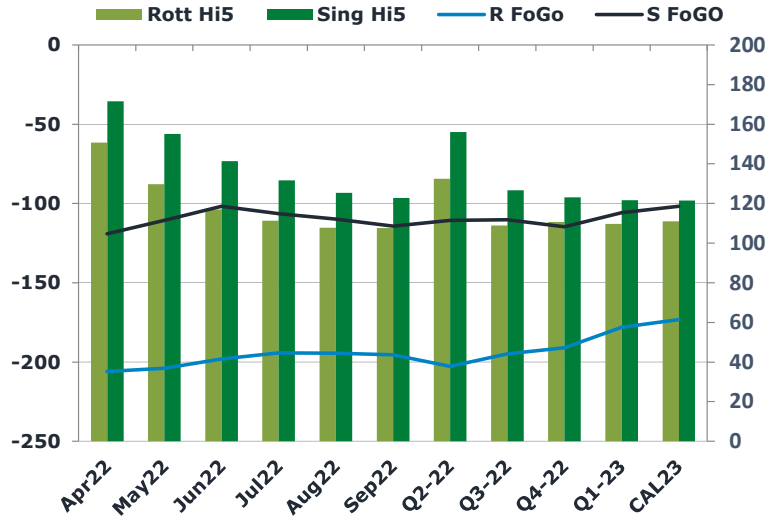
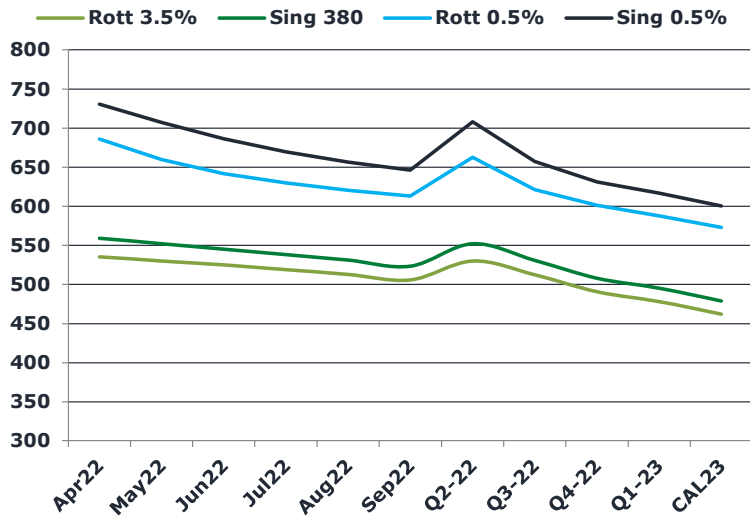
### Oil and Energy Market News

Brent crude oil front month futures ended the day down 0.3% printing \$99.13 at 1630BST. Highs in the day reached \$103.70 and lows touched \$97.55

### Brent

99.13

	Barges 3.5 %	Sing 380cst	Rott 0.5%	Sing 0.5%	Sing Hi5
Apr22	535.05	559.05	685.85	730.65	172
May22	530.05	552.05	659.85	707.15	155
Jun22	524.80	545.05	641.85	686.40	141
Jul22	518.80	538.05	630.10	669.65	132
Aug22	512.80	531.30	620.60	656.65	125
Sep22	505.55	523.30	613.10	646.15	123
Q2-22	529.95	552.05	662.50	708.05	156
Q3-22	512.38	530.88	621.27	657.48	127
Q4-22	490.47	507.88	601.10	631.07	123
Q1-23	478.05	495.22	587.68	616.90	122
CAL23	461.74	478.84	572.81	600.34	121



### Fuel Oil Market News

The Barges crack opened at -12 this morning and ended the day printing -12.50. The Cal 23 crack was valued at 10.50.

The Singapore 0.5% crack ended the day trading at 18.25, with the Rott 0.5% crack printing 11.20 on both front months, respectively.

	Rott GOFO	Sing GOFO	R FoGo	S FoGO	Rott Hi5
Apr22	356.85	290.85	-206.00	-119.25	151
May22	333.87	265.81	-204.00	-110.75	130
Jun22	315.08	243.01	-198.00	-101.75	117
Jul22	305.59	238.09	-194.25	-106.50	111
Aug22	302.42	235.16	-194.50	-109.75	108
Sep22	302.99	237.20	-195.50	-114.25	108
Q2-22	335.30	266.71	-202.75	-110.75	133
Q3-22	303.66	236.82	-194.75	-110.25	109
Q4-22	301.70	237.84	-191.00	-114.75	111
Q1-23	287.72	227.48	-178.00	-105.75	110
CAL23	284.39	223.35	-173.25	-101.75	111

# FIS Fuel Oil Daily Evening Report

London +44 20 7090 1134 - info@freightinvestor.com | Singapore +65 6535 5189 - info@freightinvestor.asia | Shanghai +86 21 63012568

16 March 2022

## TIME SPREADS FUEL

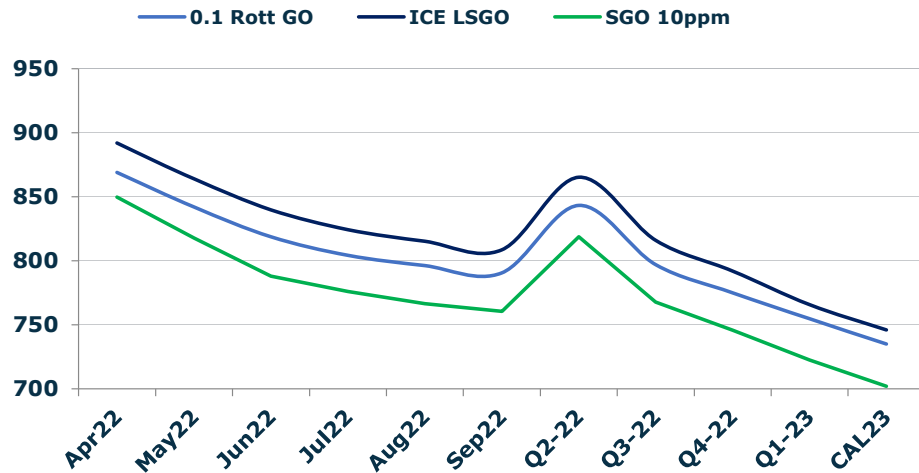
	Barges 3.5	S 380	Rott 0.5%	Sing 0.5%
Apr22/May22	5.00	7.00	26.00	23.50
May22/Jun22	5.25	7.00	18.00	20.75
Jun22/Jul22	6.00	7.00	11.75	16.75
Jul22/Aug22	6.00	6.75	9.50	13.00
Aug22/Sep22	7.25	8.00	7.50	10.50
Q2-22/Q3-22	17.57	21.17	41.23	50.57
Q3-22/Q4-22	21.92	23.00	20.17	26.42
Q4-22/Q1-23	12.42	12.67	13.42	14.17
CAL23/CAL24	45.00	43.25	36.1	19.75

## GASOIL CURVES

	Rott 0.1	SGO 10ppm	ICE GO
Apr22	868.9	849.9	891.9
May22	841.9	817.9	863.9
Jun22	818.9	788.1	839.9
Jul22	804.4	776.1	824.4
Aug22	796.2	766.5	815.2
Sep22	790.5	760.5	808.5
Q2-22	843.3	818.8	865.3
Q3-22	797.0	767.7	816.0
Q4-22	775.2	745.7	792.2
Q1-23	754.8	722.7	765.8
CAL23	735.1	702.2	746.1

## EW SPREAD

	EW380	EW0.5%
Apr22	24.00	44.80
May22	22.00	47.30
Jun22	20.25	44.55
Jul22	19.25	39.55
Aug22	18.50	36.05
Sep22	17.75	33.05
Q2-22	22.10	45.55
Q3-22	18.50	36.22
Q4-22	17.42	29.97
Q1-23	17.17	29.22
CAL23	20.00	27.53



## Contact US:

### Luke Longhurst

Email: lukel@freightinvestor.com

Mobile: (+44) 7966 968761

### Ricky Forman

Email: rickyf@freightinvestor.com

Mobile: (+44) 7868 708719

### Sam Twyford

Email: samt@freightinvestor.com

Mobile: (+44) 7729 118643

### Jessie Deng

Email: jessied@freightinvestor.com

Mobile: (+86) 13524516743

### Jarryd Smith

Email: jarryds@freightinvestor.com

Mobile: (+65) 8798 4987

The information provided in this communication is not intended for retail clients. It is general in nature only and does not constitute advice or an offer to sell, or the solicitation of an offer to purchase any swap or other financial instruments, nor constitute any recommendation on our part. The information has been prepared without considering your investment objectives, financial situation, or knowledge and experience. This material is not a research report and is not intended as such. FIS is not responsible for any trading decisions taken based on this communication. Trading swaps and over-the-counter derivatives, exchange-traded derivatives, and options involve substantial risk and are not suitable for all investors. You are advised to perform an independent investigation to determine whether a transaction is suitable for you. No part of this material may be copied or duplicated in any form by any means or redistributed without our prior written consent. Freight Investor Services Ltd (FIS) is authorised and regulated by the Financial Conduct Authority (FRN: 211452) and is a member of the National Futures Association ("NFA"). Freight Investor Services PTE Ltd ('FIS PTE') is a private limited company, incorporated and registered in Singapore with company number 200603922G, and has subsidiary offices in India and Shanghai. Freight Investor Solutions DMCC ('FIS DMCC') is a private limited company, incorporated and registered in Dubai with company number DMCC1225. Further information about FIS including the location of its offices can be found on our website at [freightinvestorservices.com](http://freightinvestorservices.com)