

FIS Fuel Oil Daily Evening Report

London +44 20 7090 1134 - info@freightinvestor.com | Singapore +65 6535 5189 - info@freightinvestor.asia | Shanghai +86 21 63012568

18 March 2022

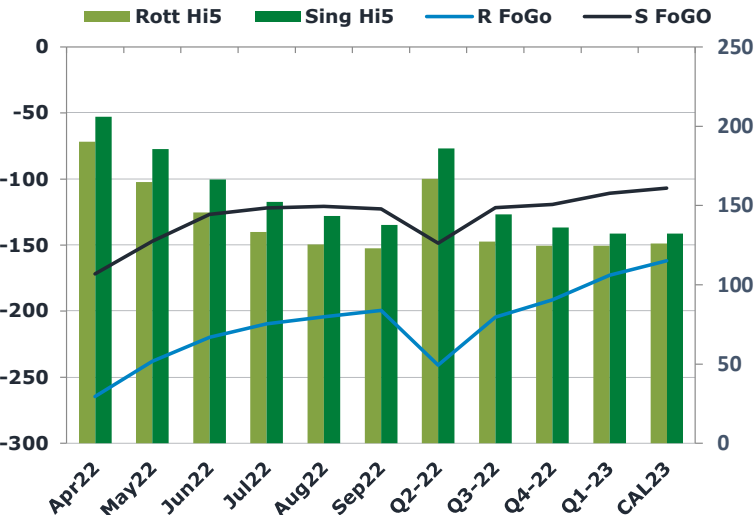
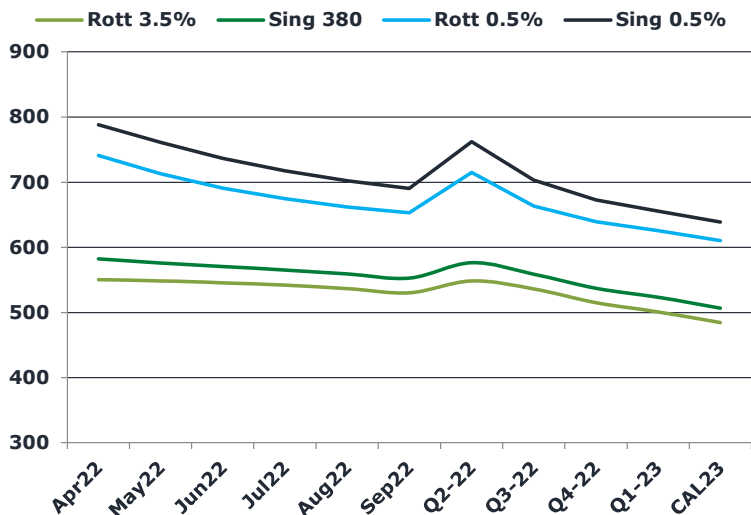
Oil and Energy Market News

Brent crude oil front month futures ended the day up 0.3% printing \$106.89 at 1630BST. Highs in the day reached \$109.59 and lows touched \$105.78

Brent

106.89

	Barges 3.5 %	Sing 380cst	Rott 0.5%	Sing 0.5%	Sing Hi5
Apr22	550.55	582.30	740.75	788.35	206
May22	548.55	575.80	713.25	761.35	186
Jun22	545.55	570.55	691.25	736.85	166
Jul22	541.80	565.05	675.00	717.35	152
Aug22	536.80	559.05	662.25	702.35	143
Sep22	530.30	552.55	653.25	690.35	138
Q2-22	548.20	576.20	715.10	762.20	186
Q3-22	536.30	558.88	663.50	703.35	144
Q4-22	514.80	536.88	639.33	672.93	136
Q1-23	500.88	523.38	625.50	655.68	132
CAL23	484.28	506.63	610.33	638.87	132



Fuel Oil Market News

The Barges crack opened at -17 this morning and ended the day printing -16.60. The Cal 23 crack was valued at 10.50.

The Singapore 0.5% crack ended the day trading at 20.20, with the Rott 0.5% crack printing 12.20 on both front months, respectively.

	Rott GOFO	Sing GOFO	R FoGo	S FoGO	Rott Hi5
Apr22	454.88	378.13	-264.75	-172.00	190
May22	402.62	332.48	-238.00	-147.00	165
Jun22	365.37	293.03	-219.75	-126.75	146
Jul22	342.78	274.32	-209.50	-122.00	133
Aug22	329.62	263.93	-204.25	-120.75	125
Sep22	322.33	260.37	-199.50	-122.50	123
Q2-22	407.65	334.56	-240.75	-148.50	167
Q3-22	331.58	266.21	-204.50	-121.75	127
Q4-22	316.01	255.18	-191.50	-119.25	125
Q1-23	297.26	243.10	-172.75	-110.75	125
CAL23	288.14	239.35	-162.00	-107.00	126

FIS Fuel Oil Daily Evening Report

London +44 20 7090 1134 - info@freightinvestor.com | Singapore +65 6535 5189 - info@freightinvestor.asia | Shanghai +86 21 63012568

18 March 2022

TIME SPREADS FUEL

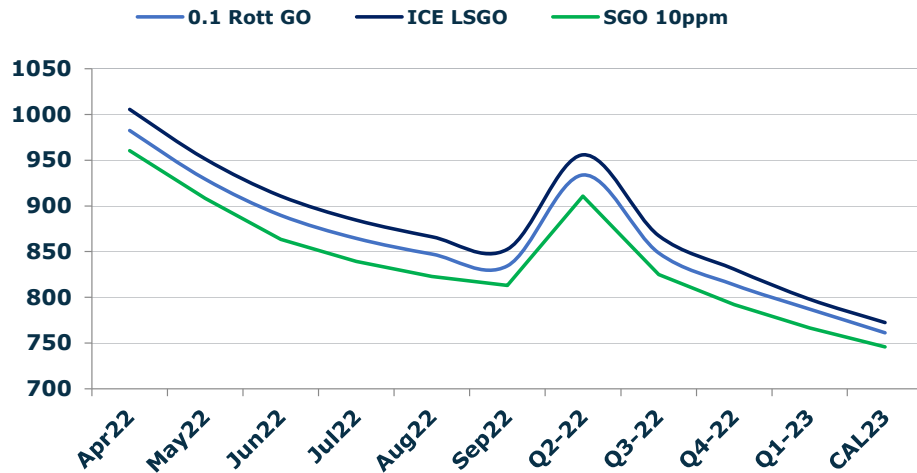
	Barges 3.5	S 380	Rott 0.5%	Sing 0.5%
Apr22/May22	2.00	6.50	27.50	27.00
May22/Jun22	3.00	5.25	22.00	24.50
Jun22/Jul22	3.75	5.50	16.25	19.50
Jul22/Aug22	5.00	6.00	12.75	15.00
Aug22/Sep22	6.50	6.50	9.00	12.00
Q2-22/Q3-22	11.90	17.32	51.60	58.85
Q3-22/Q4-22	21.50	22.00	24.17	30.42
Q4-22/Q1-23	13.92	13.50	13.83	17.25
CAL23/CAL24	45.00	43.25	51.1	30.49

GASOIL CURVES

	Rott 0.1	SGO 10ppm	ICE GO
Apr22	982.4	960.4	1005.4
May22	929.2	908.3	951.2
Jun22	889.9	863.6	910.9
Jul22	864.6	839.4	884.6
Aug22	847.4	823.0	866.4
Sep22	834.6	812.9	852.6
Q2-22	933.9	910.8	955.9
Q3-22	848.9	825.1	867.9
Q4-22	813.8	792.1	830.8
Q1-23	787.1	766.5	798.1
CAL23	761.4	746.0	772.4

EW SPREAD

	EW380	EW0.5%
Apr22	31.75	47.60
May22	27.25	48.10
Jun22	25.00	45.60
Jul22	23.25	42.35
Aug22	22.25	40.10
Sep22	22.25	37.10
Q2-22	28.00	47.10
Q3-22	22.58	39.85
Q4-22	22.08	33.60
Q1-23	22.50	30.18
CAL23	20.00	28.54



Contact US:

Luke Longhurst

Email: lukel@freightinvestor.com

Mobile: (+44) 7966 968761

Ricky Forman

Email: rickyf@freightinvestor.com

Mobile: (+44) 7868 708719

Sam Twyford

Email: samt@freightinvestor.com

Mobile: (+44) 7729 118643

Jessie Deng

Email: jessied@freightinvestor.com

Mobile: (+86) 13524516743

Jarryd Smith

Email: jarryds@freightinvestor.com

Mobile: (+65) 8798 4987

The information provided in this communication is not intended for retail clients. It is general in nature only and does not constitute advice or an offer to sell, or the solicitation of an offer to purchase any swap or other financial instruments, nor constitute any recommendation on our part. The information has been prepared without considering your investment objectives, financial situation, or knowledge and experience. This material is not a research report and is not intended as such. FIS is not responsible for any trading decisions taken based on this communication. Trading swaps and over-the-counter derivatives, exchange-traded derivatives, and options involve substantial risk and are not suitable for all investors. You are advised to perform an independent investigation to determine whether a transaction is suitable for you. No part of this material may be copied or duplicated in any form by any means or redistributed without our prior written consent. Freight Investor Services Ltd (FIS) is authorised and regulated by the Financial Conduct Authority (FRN: 211452) and is a member of the National Futures Association ("NFA"). Freight Investor Services PTE Ltd ('FIS PTE') is a private limited company, incorporated and registered in Singapore with company number 200603922G, and has subsidiary offices in India and Shanghai. Freight Investor Solutions DMCC ('FIS DMCC') is a private limited company, incorporated and registered in Dubai with company number DMCC1225. Further information about FIS including the location of its offices can be found on our website at freightinvestorservices.com