

FIS Fuel Oil Daily Evening Report

London +44 20 7090 1134 - info@freightinvestor.com | Singapore +65 6535 5189 - info@freightinvestor.asia | Shanghai +86 21 63012568

21 March 2022

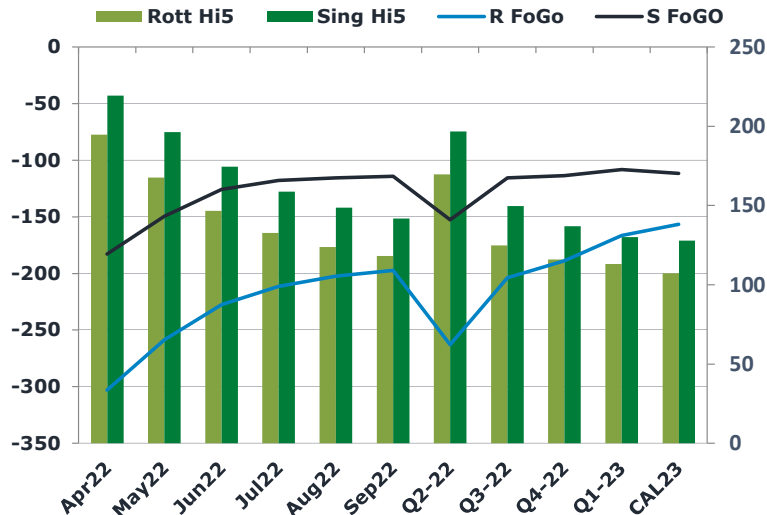
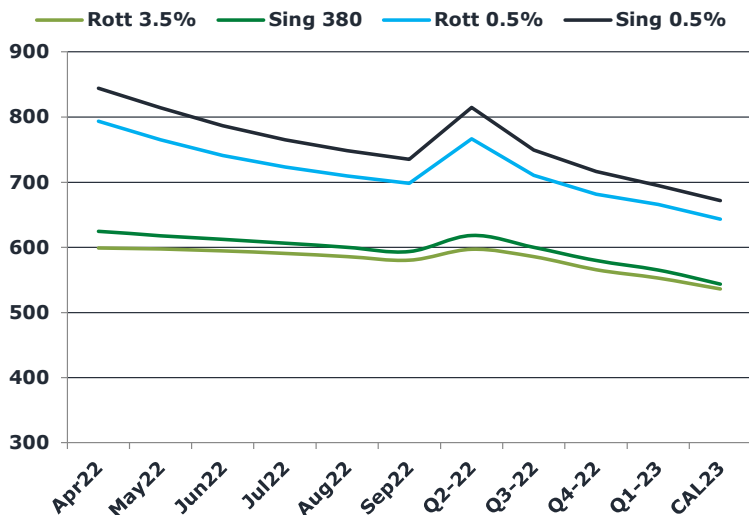
Oil and Energy Market News

Brent crude oil front month futures ended the day up 6% printing \$115.67 at 1630BST. Highs in the day reached \$115.00 and lows touched \$107.06

Brent

114.67

	Barges 3.5 %	Sing 380cst	Rott 0.5%	Sing 0.5%	Sing Hi5
Apr22	599.10	624.60	793.75	843.90	219
May22	597.35	617.85	765.00	814.15	196
Jun22	594.60	612.35	741.25	786.90	175
Jul22	590.60	606.35	723.25	765.15	159
Aug22	585.85	600.10	709.75	748.65	149
Sep22	580.10	593.35	698.25	735.15	142
Q2-22	597.00	618.25	766.65	815.00	197
Q3-22	585.52	599.93	710.42	749.65	150
Q4-22	565.77	579.60	681.75	716.48	137
Q1-23	552.68	565.10	665.75	695.07	130
CAL23	536.08	543.56	643.25	671.44	128



Fuel Oil Market News

The Barges crack opened at -17.20 this morning and ended the day printing -16.8. The Cal 23 crack was valued at 10.50.

The Singapore 0.5% crack ended the day trading at 21.80, with the Rott 0.5% crack printing 13.90 on both front months, respectively.

	Rott GOFO	Sing GOFO	R FoGo	S FoGo	Rott Hi5
Apr22	497.90	402.40	-303.25	-183.00	195
May22	426.07	345.83	-258.50	-149.50	168
Jun22	374.15	300.29	-227.50	-125.75	147
Jul22	344.20	276.49	-211.50	-117.75	133
Aug22	326.47	264.12	-202.50	-115.50	124
Sep22	315.32	255.97	-197.25	-114.25	118
Q2-22	432.70	349.51	-263.00	-152.75	170
Q3-22	328.66	265.53	-203.75	-115.75	125
Q4-22	304.69	250.72	-188.75	-113.75	116
Q1-23	279.55	238.52	-166.50	-108.50	113
CAL23	263.85	239.56	-156.75	-111.75	107

FIS Fuel Oil Daily Evening Report

London +44 20 7090 1134 - info@freightinvestor.com | Singapore +65 6535 5189 - info@freightinvestor.asia | Shanghai +86 21 63012568

21 March 2022

TIME SPREADS FUEL

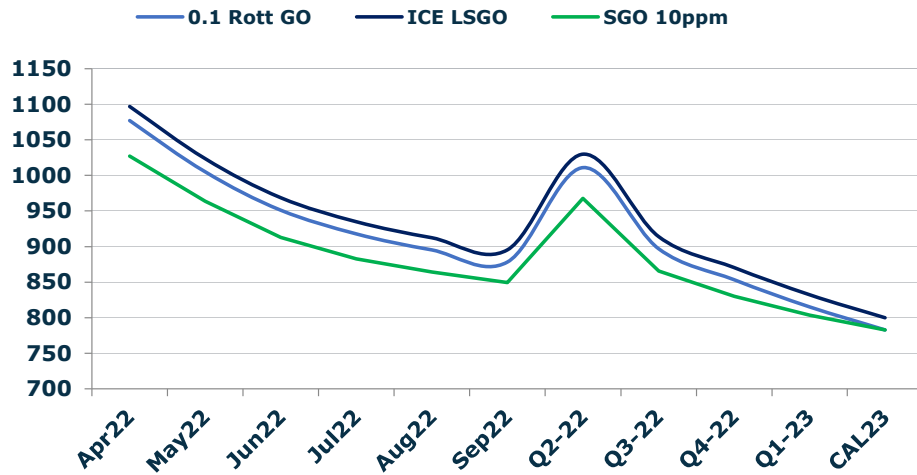
	Barges 3.5	S 380	Rott 0.5%	Sing 0.5%
Apr22/May22	1.75	6.75	28.75	29.75
May22/Jun22	2.75	5.50	23.75	27.25
Jun22/Jul22	4.00	6.00	18.00	21.75
Jul22/Aug22	4.75	6.25	13.50	16.50
Aug22/Sep22	5.75	6.75	11.50	13.50
Q2-22/Q3-22	11.48	18.32	56.23	65.35
Q3-22/Q4-22	19.75	20.33	28.67	33.17
Q4-22/Q1-23	13.08	14.50	16.00	21.42
CAL23/CAL24	45.00	43.25	32.2	26.13

GASOIL CURVES

	Rott 0.1	SGO 10ppm	ICE GO
Apr22	1077.0	1027.0	1097.0
May22	1004.9	963.7	1023.4
Jun22	951.3	912.6	968.8
Jul22	917.8	882.8	934.8
Aug22	895.3	864.2	912.3
Sep22	878.4	849.3	895.4
Q2-22	1011.1	967.8	1029.7
Q3-22	897.2	865.5	914.2
Q4-22	853.5	830.3	870.5
Q1-23	815.2	803.6	832.2
CAL23	782.9	783.1	799.9

EW SPREAD

	EW380	EW0.5%
Apr22	25.50	50.15
May22	20.50	49.15
Jun22	17.75	45.65
Jul22	15.75	41.90
Aug22	14.25	38.90
Sep22	13.25	36.90
Q2-22	21.25	48.35
Q3-22	14.42	39.23
Q4-22	13.83	34.73
Q1-23	12.42	29.32
CAL23	24.50	28.19



Contact US:

Luke Longhurst

Email: lukel@freightinvestor.com

Mobile: (+44) 7966 968761

Ricky Forman

Email: rickyf@freightinvestor.com

Mobile: (+44) 7868 708719

Sam Twyford

Email: samt@freightinvestor.com

Mobile: (+44) 7729 118643

Jessie Deng

Email: jessied@freightinvestor.com

Mobile: (+86) 13524516743

Jarryd Smith

Email: jarryds@freightinvestor.com

Mobile: (+65) 8798 4987

The information provided in this communication is not intended for retail clients. It is general in nature only and does not constitute advice or an offer to sell, or the solicitation of an offer to purchase any swap or other financial instruments, nor constitute any recommendation on our part. The information has been prepared without considering your investment objectives, financial situation, or knowledge and experience. This material is not a research report and is not intended as such. FIS is not responsible for any trading decisions taken based on this communication. Trading swaps and over-the-counter derivatives, exchange-traded derivatives, and options involve substantial risk and are not suitable for all investors. You are advised to perform an independent investigation to determine whether a transaction is suitable for you. No part of this material may be copied or duplicated in any form by any means or redistributed without our prior written consent. Freight Investor Services Ltd (FIS) is authorised and regulated by the Financial Conduct Authority (FRN: 211452) and is a member of the National Futures Association ("NFA"). Freight Investor Services PTE Ltd ('FIS PTE') is a private limited company, incorporated and registered in Singapore with company number 200603922G, and has subsidiary offices in India and Shanghai. Freight Investor Solutions DMCC ('FIS DMCC') is a private limited company, incorporated and registered in Dubai with company number DMCC1225. Further information about FIS including the location of its offices can be found on our website at freightinvestorservices.com