

# FIS Fuel Oil Daily Evening Report

London +44 20 7090 1134 - info@freightinvestor.com | Singapore +65 6535 5189 - info@freightinvestor.asia | Shanghai +86 21 63012568

## 22 March 2022

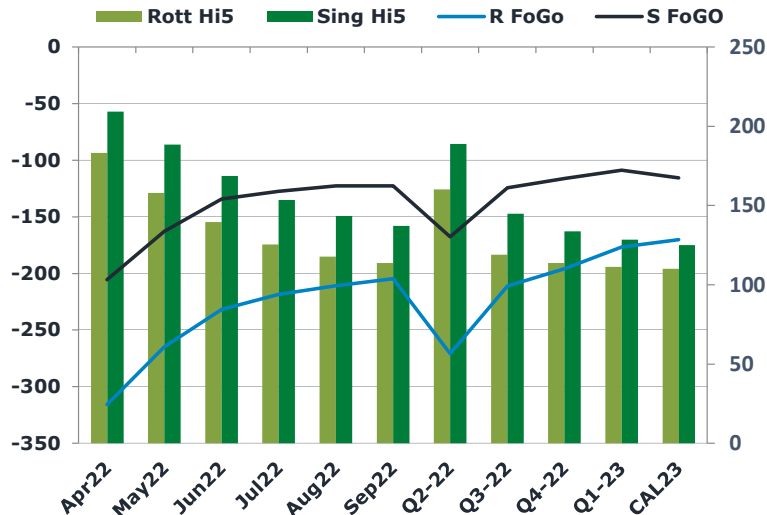
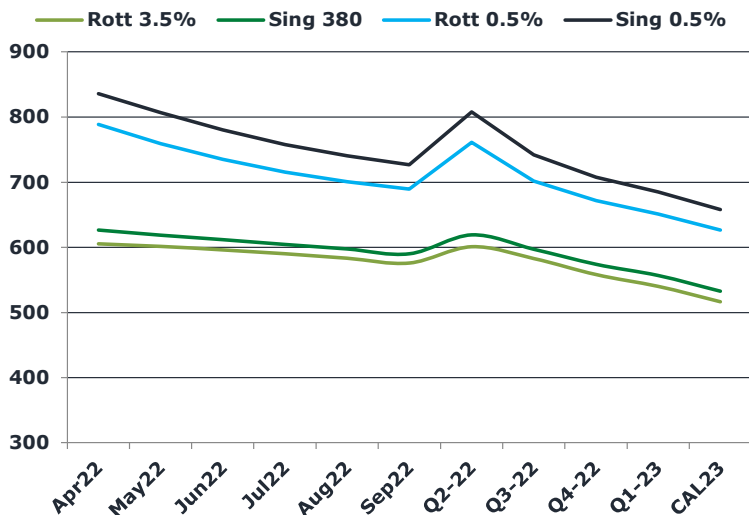
### Oil and Energy Market News

Brent crude oil front month futures ended the day down 0.9% printing \$114.72 at 1630BST. Highs in the day reached \$119.48 and lows touched \$112.64

### Brent

114.72

	Barges 3.5 %	Sing 380cst	Rott 0.5%	Sing 0.5%	Sing Hi5
Apr22	605.40	626.40	788.60	835.60	209
May22	601.40	618.65	759.35	807.10	188
Jun22	595.90	611.65	735.35	780.35	169
Jul22	589.90	604.40	715.35	757.85	153
Aug22	583.15	597.40	700.85	740.85	143
Sep22	575.65	589.90	689.35	727.10	137
Q2-22	600.90	618.90	761.10	807.70	189
Q3-22	582.90	597.23	701.85	741.93	145
Q4-22	557.98	573.90	671.77	707.52	134
Q1-23	540.15	556.65	651.43	685.10	128
CAL23	516.19	532.78	626.31	657.79	125



### Fuel Oil Market News

The Barges crack opened at -17.10 this morning and ended the day printing -15.8. The Cal 23 crack was valued at 10.50.

The Singapore 0.5% crack ended the day trading at 20.55, with the Rott 0.5% crack printing 13.15 on both front months, respectively.

	Rott GOFO	Sing GOFO	R FoGo	S FoGO	Rott Hi5
Apr22	498.92	414.92	-315.75	-205.75	183
May22	422.68	351.15	-264.75	-162.75	158
Jun22	371.18	303.02	-231.75	-134.25	139
Jul22	343.94	280.84	-218.50	-127.50	125
Aug22	328.35	266.24	-210.75	-122.75	118
Sep22	318.35	259.96	-204.75	-122.75	114
Q2-22	430.95	356.31	-270.75	-167.50	160
Q3-22	330.21	269.01	-211.25	-124.25	119
Q4-22	309.84	249.96	-196.00	-116.25	114
Q1-23	288.10	237.53	-176.75	-109.00	111
CAL23	280.32	240.51	-170.25	-115.50	110

# FIS Fuel Oil Daily Evening Report

London +44 20 7090 1134 - info@freightinvestor.com | Singapore +65 6535 5189 - info@freightinvestor.asia | Shanghai +86 21 63012568

## 22 March 2022

### TIME SPREADS FUEL

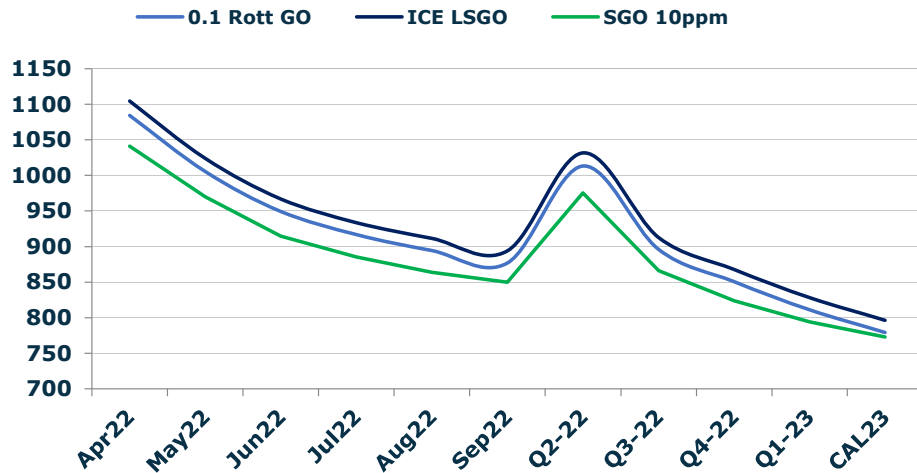
	Barges 3.5	S 380	Rott 0.5%	Sing 0.5%
Apr22/May22	4.00	7.75	29.25	28.50
May22/Jun22	5.50	7.00	24.00	26.75
Jun22/Jul22	6.00	7.25	20.00	22.50
Jul22/Aug22	6.75	7.00	14.50	17.00
Aug22/Sep22	7.50	7.50	11.50	13.75
Q2-22/Q3-22	18.00	21.67	59.25	65.77
Q3-22/Q4-22	24.92	23.33	30.08	34.42
Q4-22/Q1-23	17.83	17.25	20.33	22.42
CAL23/CAL24	35.00	33.25	25.1	13.26

### GASOIL CURVES

	Rott 0.1	SGO 10ppm	ICE GO
Apr22	1084.3	1041.3	1104.3
May22	1005.6	969.8	1024.1
Jun22	949.6	914.7	967.1
Jul22	916.8	885.2	933.8
Aug22	894.5	863.6	911.5
Sep22	877.0	849.9	894.0
Q2-22	1013.2	975.2	1031.9
Q3-22	896.1	866.2	913.1
Q4-22	850.8	823.9	867.8
Q1-23	811.3	794.2	828.3
CAL23	779.5	773.3	796.5

### EW SPREAD

	EW380	EW0.5%
Apr22	21.00	47.00
May22	17.25	47.75
Jun22	15.75	45.00
Jul22	14.50	42.50
Aug22	14.25	40.00
Sep22	14.25	37.75
Q2-22	18.00	46.60
Q3-22	14.33	40.08
Q4-22	15.92	35.75
Q1-23	16.50	33.67
CAL23	24.50	31.48



### Contact US:

**Luke Longhurst**

Email: lukel@freightinvestor.com

Mobile: (+44) 7966 968761

**Ricky Forman**

Email: rickyf@freightinvestor.com

Mobile: (+44) 7868 708719

**Sam Twyford**

Email: samt@freightinvestor.com

Mobile: (+44) 7729 118643

**Jessie Deng**

Email: jessied@freightinvestor.com

Mobile: (+86) 13524516743

**Jarryd Smith**

Email: jarryds@freightinvestor.com

Mobile: (+65) 8798 4987

The information provided in this communication is not intended for retail clients. It is general in nature only and does not constitute advice or an offer to sell, or the solicitation of an offer to purchase any swap or other financial instruments, nor constitute any recommendation on our part. The information has been prepared without considering your investment objectives, financial situation, or knowledge and experience. This material is not a research report and is not intended as such. FIS is not responsible for any trading decisions taken based on this communication. Trading swaps and over-the-counter derivatives, exchange-traded derivatives, and options involve substantial risk and are not suitable for all investors. You are advised to perform an independent investigation to determine whether a transaction is suitable for you. No part of this material may be copied or duplicated in any form by any means or redistributed without our prior written consent. Freight Investor Services Ltd (FIS) is authorised and regulated by the Financial Conduct Authority (FRN: 211452) and is a member of the National Futures Association ("NFA"). Freight Investor Services PTE Ltd ('FIS PTE') is a private limited company, incorporated and registered in Singapore with company number 200603922G, and has subsidiary offices in India and Shanghai. Freight Investor Solutions DMCC ('FIS DMCC') is a private limited company, incorporated and registered in Dubai with company number DMCC1225. Further information about FIS including the location of its offices can be found on our website at [freightinvestorservices.com](http://freightinvestorservices.com)