

FIS Fuel Oil Daily Evening Report

London +44 20 7090 1134 - info@freightinvestor.com | Singapore +65 6535 5189 - info@freightinvestor.asia | Shanghai +86 21 63012568

23 March 2022

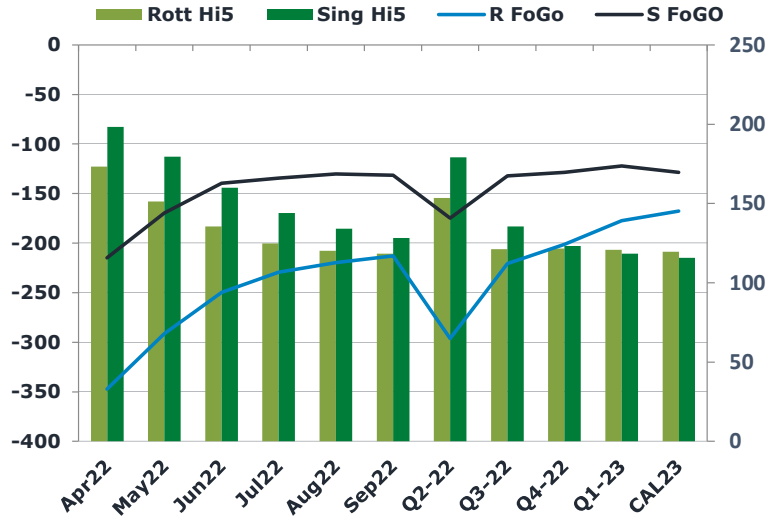
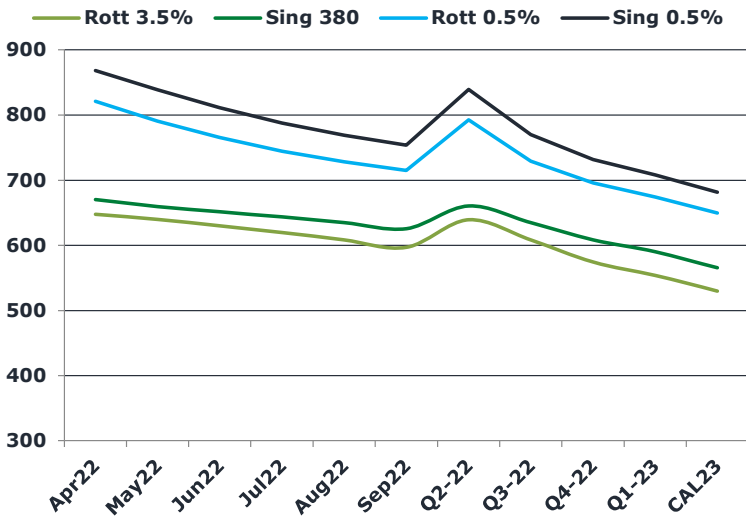
Oil and Energy Market News

Brent crude oil front month futures ended the day up 4.5% printing \$121.13 at 1630BST. Highs in the day reached \$122.34 and lows touched \$114.45.

Brent

121.13

	Barges 3.5 %	Sing 380cst	Rott 0.5%	Sing 0.5%	Sing Hi5
Apr22	647.60	670.10	820.95	868.30	198
May22	639.60	659.60	790.95	839.05	179
Jun22	629.85	651.35	765.45	811.30	160
Jul22	619.60	643.60	744.45	787.55	144
Aug22	608.35	634.85	728.45	769.05	134
Sep22	596.85	625.60	715.20	753.80	128
Q2-22	639.00	660.35	792.45	839.55	179
Q3-22	608.27	634.68	729.37	770.13	135
Q4-22	574.27	608.52	695.78	731.72	123
Q1-23	553.85	590.10	674.53	708.38	118
CAL23	529.89	565.43	649.41	681.26	116



Fuel Oil Market News

The Barges crack opened at -15.80 this morning and ended the day printing -15.00. The Cal 23 crack was valued at 10.50.

The Singapore 0.5% crack ended the day trading at 19.75, with the Rott 0.5% crack printing 12.30 on both front months, respectively.

	Rott GOFO	Sing GOFO	R FoGo	S FoGO	Rott Hi5
Apr22	520.60	413.10	-347.25	-215.00	173
May22	442.86	349.25	-291.50	-169.75	151
Jun22	385.32	299.39	-249.75	-139.50	136
Jul22	354.42	278.09	-229.50	-134.25	125
Aug22	339.80	264.49	-219.75	-130.25	120
Sep22	331.36	259.58	-213.00	-131.50	118
Q2-22	449.60	353.97	-296.25	-174.75	153
Q3-22	341.86	267.38	-220.75	-132.00	121
Q4-22	322.66	251.71	-201.25	-128.50	122
Q1-23	297.93	240.45	-177.25	-122.25	121
CAL23	287.29	244.22	-167.75	-128.50	120



Fuel Oil Daily Evening Report

London +44 20 7090 1134 - info@freightinvestor.com | Singapore +65 6535 5189 - info@freightinvestor.asia | Shanghai +86 21 63012568

23 March 2022

TIME SPREADS FUEL

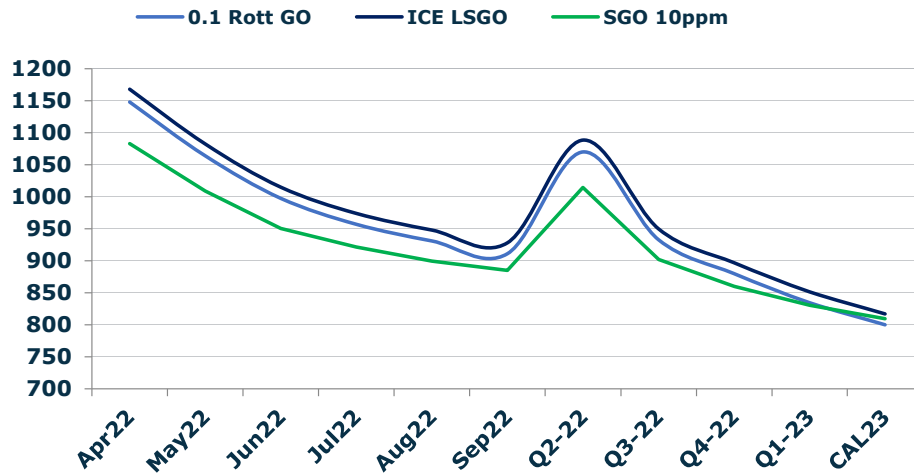
	Barges 3.5	S 380	Rott 0.5%	Sing 0.5%
Apr22/May22	8.00	10.50	30.00	29.25
May22/Jun22	9.75	8.25	25.50	27.75
Jun22/Jul22	10.25	7.75	21.00	23.75
Jul22/Aug22	11.25	8.75	16.00	18.50
Aug22/Sep22	11.50	9.25	13.25	15.25
Q2-22/Q3-22	30.73	25.67	63.08	69.42
Q3-22/Q4-22	34.00	26.17	33.58	38.42
Q4-22/Q1-23	20.42	18.42	21.25	23.33
CAL23/CAL24	35.00	33.25	34.5	4.07

GASOIL CURVES

	Rott 0.1	SGO 10ppm	ICE GO
Apr22	1148.2	1083.2	1168.2
May22	1064.0	1008.9	1082.5
Jun22	997.7	950.7	1015.2
Jul22	957.0	921.7	974.0
Aug22	931.1	899.3	948.1
Sep22	911.2	885.2	928.2
Q2-22	1070.0	1014.3	1088.6
Q3-22	933.1	902.1	950.1
Q4-22	879.9	860.2	896.9
Q1-23	834.8	830.5	851.8
CAL23	800.2	809.6	817.2

EW SPREAD

	EW380	EW0.5%
Apr22	22.50	47.35
May22	20.00	48.10
Jun22	21.50	45.85
Jul22	24.00	43.10
Aug22	26.50	40.60
Sep22	28.75	38.60
Q2-22	21.35	47.10
Q3-22	26.42	40.77
Q4-22	34.25	35.93
Q1-23	36.25	33.85
CAL23	24.50	31.85



Contact US:

Luke Longhurst

Email: lukel@freightinvestor.com

Mobile: (+44) 7966 968761

Ricky Forman

Email: rickyf@freightinvestor.com

Mobile: (+44) 7868 708719

Sam Twyford

Email: samt@freightinvestor.com

Mobile: (+44) 7729 118643

Jessie Deng

Email: jessied@freightinvestor.com

Mobile: (+86) 13524516743

Jarryd Smith

Email: jarryds@freightinvestor.com

Mobile: (+65) 8798 4987

The information provided in this communication is not intended for retail clients. It is general in nature only and does not constitute advice or an offer to sell, or the solicitation of an offer to purchase any swap or other financial instruments, nor constitute any recommendation on our part. The information has been prepared without considering your investment objectives, financial situation, or knowledge and experience. This material is not a research report and is not intended as such. FIS is not responsible for any trading decisions taken based on this communication. Trading swaps and over-the-counter derivatives, exchange-traded derivatives, and options involve substantial risk and are not suitable for all investors. You are advised to perform an independent investigation to determine whether a transaction is suitable for you. No part of this material may be copied or duplicated in any form by any means or redistributed without our prior written consent. Freight Investor Services Ltd (FIS) is authorised and regulated by the Financial Conduct Authority (FRN: 211452) and is a member of the National Futures Association ("NFA"). Freight Investor Services PTE Ltd ('FIS PTE') is a private limited company, incorporated and registered in Singapore with company number 200603922G, and has subsidiary offices in India and Shanghai. Freight Investor Solutions DMCC ('FIS DMCC') is a private limited company, incorporated and registered in Dubai with company number DMCC1225. Further information about FIS including the location of its offices can be found on our website at freightinvestorservices.com