

FIS Fuel Oil Daily Evening Report

London +44 20 7090 1134 - info@freightinvestor.com | Singapore +65 6535 5189 - info@freightinvestor.asia | Shanghai +86 21 63012568

24 March 2022

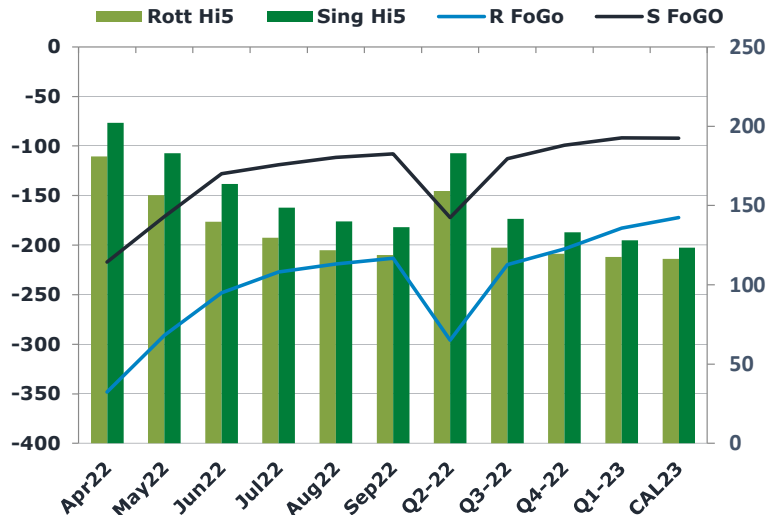
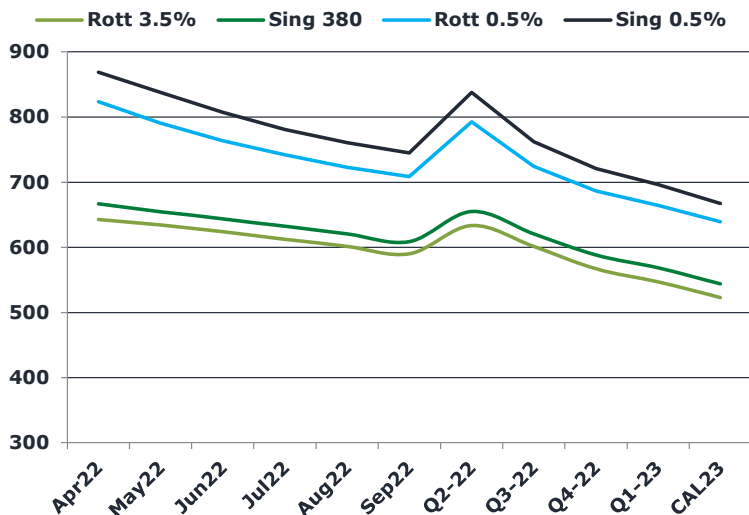
Oil and Energy Market News

Brent crude oil front month futures ended the day down 1.4% printing \$120.02 at 1630BST. Highs in the day reached \$123.74 and lows touched \$118.15.

Brent

120.02

	Barges 3.5 %	Sing 380cst	Rott 0.5%	Sing 0.5%	Sing Hi5
Apr22	642.65	666.65	823.60	868.70	202
May22	634.15	654.65	790.60	837.70	183
Jun22	623.90	643.65	763.60	807.20	164
Jul22	612.40	632.15	742.10	780.70	149
Aug22	601.40	620.65	723.10	760.70	140
Sep22	589.90	608.65	708.60	744.95	136
Q2-22	633.55	655.00	792.60	837.85	183
Q3-22	601.23	620.48	724.60	762.12	142
Q4-22	566.98	588.07	686.60	721.20	133
Q1-23	546.90	568.40	664.43	696.53	128
CAL23	522.94	543.73	639.31	667.16	123



Fuel Oil Market News

The Barges crack opened at -15.80 this morning and ended the day printing -15.00. The Cal 23 crack was valued at 10.50.

The Singapore 0.5% crack ended the day trading at 20.60, with the Rott 0.5% crack printing 13.50 on both front months, respectively.

	Rott GOFO	Sing GOFO	R FoGo	S FoGO	Rott Hi5
Apr22	529.41	419.41	-348.50	-217.25	181
May22	447.56	354.30	-291.00	-171.25	156
Jun22	387.77	291.55	-248.00	-128.00	140
Jul22	356.63	267.66	-227.00	-119.00	130
Aug22	340.80	251.59	-219.00	-111.50	122
Sep22	331.85	244.22	-213.25	-108.00	119
Q2-22	454.95	355.22	-296.00	-172.25	159
Q3-22	343.10	254.49	-219.75	-112.75	123
Q4-22	323.72	232.28	-204.00	-99.25	120
Q1-23	300.64	219.78	-183.00	-91.75	118
CAL23	288.73	215.66	-172.25	-92.25	116

FIS Fuel Oil Daily Evening Report

London +44 20 7090 1134 - info@freightinvestor.com | Singapore +65 6535 5189 - info@freightinvestor.asia | Shanghai +86 21 63012568

24 March 2022

TIME SPREADS FUEL

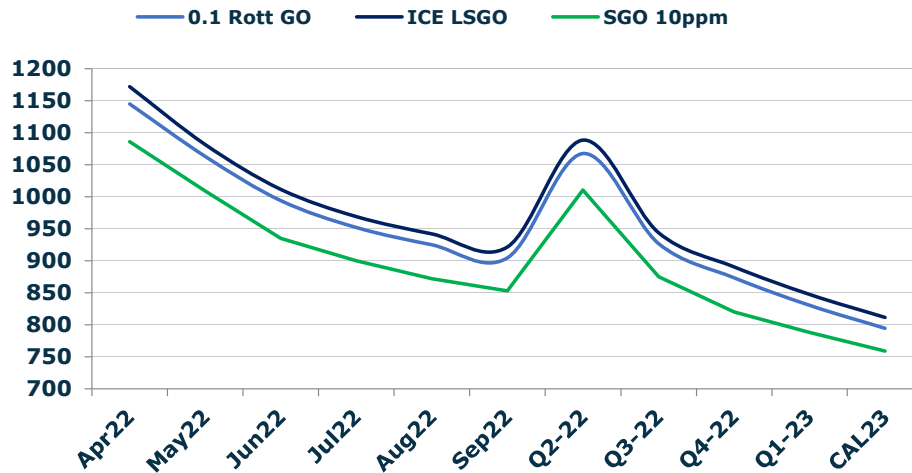
	Barges 3.5	S 380	Rott 0.5%	Sing 0.5%
Apr22/May22	8.50	12.00	33.00	31.00
May22/Jun22	10.25	11.00	27.00	30.50
Jun22/Jul22	11.50	11.50	21.50	26.50
Jul22/Aug22	11.00	11.50	19.00	20.00
Aug22/Sep22	11.50	12.00	14.50	15.75
Q2-22/Q3-22	32.32	34.52	68.00	75.73
Q3-22/Q4-22	34.25	32.42	38.00	40.92
Q4-22/Q1-23	20.08	19.67	22.17	24.67
CAL23/CAL24	38.00	36.75	34.4	15.18

GASOIL CURVES

	Rott 0.1	SGO 10ppm	ICE GO
Apr22	1145.1	1086.1	1172.1
May22	1063.2	1009.0	1081.7
Jun22	994.2	935.2	1011.7
Jul22	952.0	899.8	969.0
Aug22	925.2	872.2	942.2
Sep22	904.8	852.9	921.8
Q2-22	1067.5	1010.2	1088.5
Q3-22	927.3	875.0	944.3
Q4-22	873.7	820.3	890.7
Q1-23	830.5	788.2	847.5
CAL23	794.7	759.4	811.7

EW SPREAD

	EW380	EW0.5%
Apr22	24.00	45.10
May22	20.50	47.10
Jun22	19.75	43.60
Jul22	19.75	38.60
Aug22	19.25	37.60
Sep22	18.75	36.35
Q2-22	21.45	45.25
Q3-22	19.25	37.52
Q4-22	21.08	34.60
Q1-23	21.50	32.10
CAL23	24.50	27.85



Contact US:

Luke Longhurst

Email: lukel@freightinvestor.com

Mobile: (+44) 7966 968761

Ricky Forman

Email: rickyf@freightinvestor.com

Mobile: (+44) 7868 708719

Sam Twyford

Email: samt@freightinvestor.com

Mobile: (+44) 7729 118643

Jessie Deng

Email: jessied@freightinvestor.com

Mobile: (+86) 13524516743

Jarryd Smith

Email: jarryds@freightinvestor.com

Mobile: (+65) 8798 4987

The information provided in this communication is not intended for retail clients. It is general in nature only and does not constitute advice or an offer to sell, or the solicitation of an offer to purchase any swap or other financial instruments, nor constitute any recommendation on our part. The information has been prepared without considering your investment objectives, financial situation, or knowledge and experience. This material is not a research report and is not intended as such. FIS is not responsible for any trading decisions taken based on this communication. Trading swaps and over-the-counter derivatives, exchange-traded derivatives, and options involve substantial risk and are not suitable for all investors. You are advised to perform an independent investigation to determine whether a transaction is suitable for you. No part of this material may be copied or duplicated in any form by any means or redistributed without our prior written consent. Freight Investor Services Ltd (FIS) is authorised and regulated by the Financial Conduct Authority (FRN: 211452) and is a member of the National Futures Association ("NFA"). Freight Investor Services PTE Ltd ('FIS PTE') is a private limited company, incorporated and registered in Singapore with company number 200603922G, and has subsidiary offices in India and Shanghai. Freight Investor Solutions DMCC ('FIS DMCC') is a private limited company, incorporated and registered in Dubai with company number DMCC1225. Further information about FIS including the location of its offices can be found on our website at freightinvestorservices.com