



# Supramax & Handysize FFA Daily Report

London +44 20 7090 1120 - info@freightinvestor.com | Singapore +65 6535 5189 - info@freightinvestor.asia  
 Shanghai +86 21 6335 4002 | Dubai +971 4 4493900

02 March 2022

### Supramax Commentary

Supramax paper pushed in early trading, with strong buying interest from Asia and chasing a thin offerside. March and Q2 reached respective highs of \$29250 and \$29500. The backend ticked up with Cal23 pushing to \$17500 high. Despite a positive index, we lost momentum in the afternoon session and drifted to close flat on the day. Have a nice evening.

### Handysize Commentary

Handysize paper pushed in early trading with March-Dec printing \$25500, before drifting back to \$25000 and closing flat on the day. Cal23 remains rangebound, printing \$16400.

### Supramax 10 Time Charter Average

Spot	27178	Chg	302
MTD	27027		
YTD	21932		

### Handysize 7 Time Charter Average

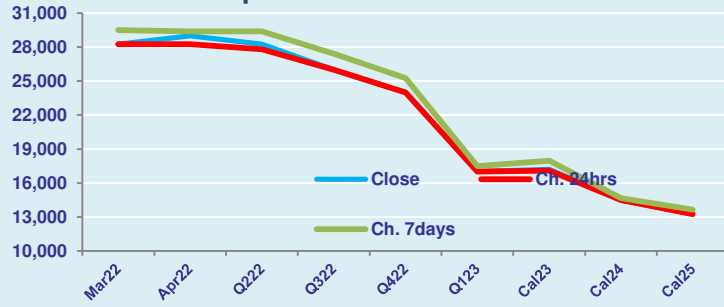
Spot	25577	Chg	24
MTD	25565		
YTD	21476		

### Spread Ratio

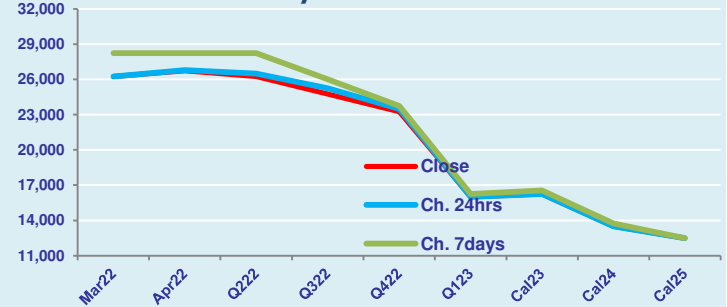
Spread	1601	Ratio	1.06
	1462		1.06
	456		1.02

Per	Bid	Offer	Mid	Chg	Per	Bid	Offer	Mid	Chg	Spread	Ratio
Mar 22	28000	28500	28250	0	Mar 22	26000	26500	26250	0	2000	1.08
Apr 22	28750	29250	29000	750	Apr 22	26500	27000	26750	-50	2250	1.08
Q2 22	28000	28500	28250	450	Q2 22	26000	26500	26250	-250	2000	1.08
Q3 22	25750	26250	26000	0	Q3 22	24500	25000	24750	-500	1250	1.05
Q4 22	23750	24250	24000	0	Q4 22	23000	23500	23250	-250	750	1.03
Q1 23	16750	17250	17000	0	Q1 23	15750	16250	16000	0	1000	1.06
Cal 23	17000	17400	17200	100	Cal 23	16000	16500	16250	0	950	1.06
Cal 24	14250	14750	14500	0	Cal 24	13250	13750	13500	0	1000	1.07
Cal 25	13000	13500	13250	500	Cal 25	12250	12750	12500	0	750	1.06

FIS Supramax Forward Curve



FIS Handy Forward Curve



Spot Price Source: Baltic

**Disclaimer:** The information provided in this communication is not intended for retail clients. It is general in nature only and does not constitute advice or an offer to sell, or the solicitation of an offer to purchase any swap or other financial instruments, nor constitute any recommendation on our part. The information has been prepared without considering your investment objectives, financial situation, or knowledge and experience. This material is not a research report and is not intended as such. FIS is not responsible for any trading decisions taken based on this communication. Trading swaps and over-the-counter derivatives, exchange-traded derivatives, and options involve substantial risk and are not suitable for all investors. You are advised to perform an independent investigation to determine whether a transaction is suitable for you. No part of this material may be copied or duplicated in any form by any means or redistributed without our prior written consent. Freight Investor Services Ltd (FIS) is authorised and regulated by the Financial Conduct Authority (FRN: 211452) and is a member of the National Futures Association ("NFA"). Freight Investor Services PTE Ltd ("FIS PTE") is a private limited company, incorporated and registered in Singapore with company number 200603922G, and has subsidiary offices in India and Shanghai. Freight Investor Solutions DMCC ("FIS DMCC") is a private limited company, incorporated and registered in Dubai with company number DMCC1225. Further information about FIS including the location of its offices can be found on our website at [www.freightinvestorservices.com](http://www.freightinvestorservices.com)