

FIS Fuel Oil Daily Evening Report

London +44 20 7090 1134 - info@freightinvestor.com | Singapore +65 6535 5189 - info@freightinvestor.asia | Shanghai +86 21 63012568

19 April 2022

Oil and Energy Market News

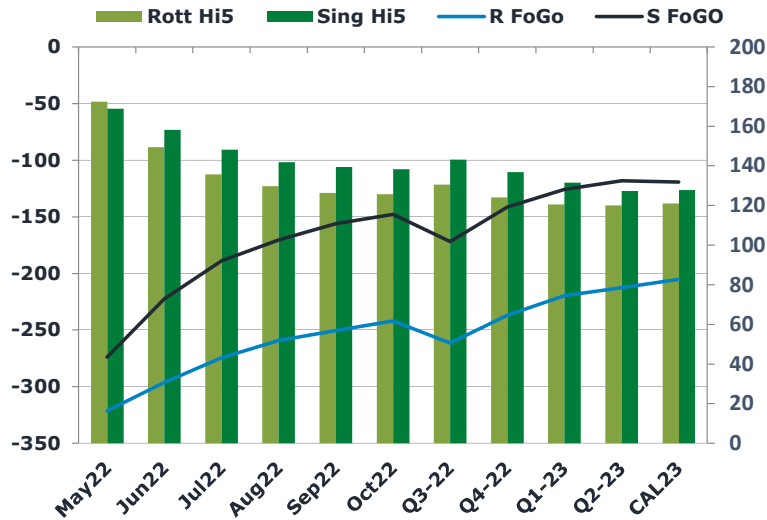
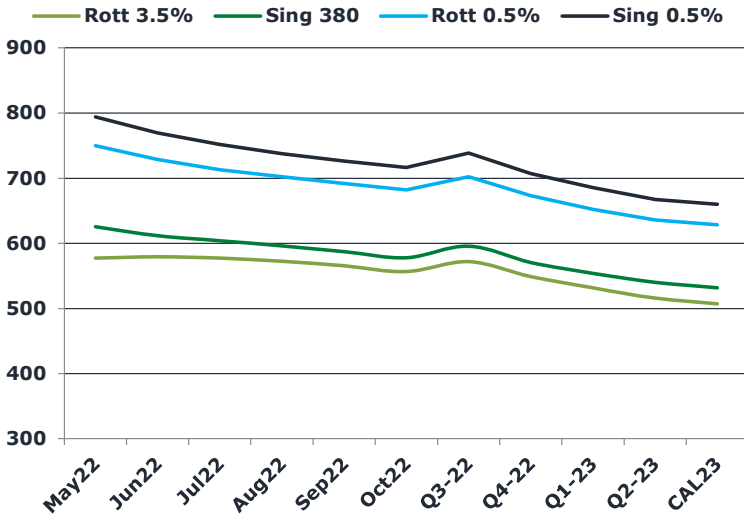
Brent crude oil front month futures ended the day down, printing \$107.57 at 1630 BST. Highs in the day reached \$114.21 and lows touched \$106.87.

OIL MAY HIT \$185 IF EU BANS ALL RUSSIAN OIL IMMEDIATELY: JPM said this afternoon shortly before a 5% sell off into the European close. No clear-cut reason for the sell off filtering though, although murmurs of a mini oil Russian embargo continued.

Brent

107.57

	Barges 3.5 %	Sing 380cst	Rott 0.5%	Sing 0.5%	Sing Hi5
May22	577.25	625.25	749.65	794.10	169
Jun22	579.50	611.50	728.90	769.60	158
Jul22	577.25	604.00	712.90	752.10	148
Aug22	572.50	596.00	702.15	737.85	142
Sep22	565.50	587.00	691.90	726.35	139
Oct22	556.50	578.00	682.15	716.35	138
Q3-22	571.75	595.65	702.30	738.75	143
Q4-22	549.00	570.67	673.15	707.43	137
Q1-23	531.50	554.00	651.98	685.43	131
Q2-23	515.92	540.08	635.90	667.43	127
CAL23	507.29	531.88	628.38	659.64	128



Fuel Oil Market News

The Barges crack opened at -16.00 this morning and ended the day printing -15.85. The Cal 23 crack was valued at -9.60.

The Singapore 0.5% crack ended the day trading at 18.30, with the Rott 0.5% crack printing 11.30 on both front months, respectively.

	Rott GOFO	Sing GOFO	R FoGo	S FoGO	Rott Hi5
May22	493.95	442.95	-321.50	-274.00	172
Jun22	445.66	380.71	-296.25	-222.50	149
Jul22	410.06	336.81	-274.50	-188.75	136
Aug22	388.84	312.40	-259.25	-170.50	130
Sep22	376.93	295.32	-250.50	-156.00	126
Oct22	367.54	286.07	-242.00	-147.75	126
Q3-22	391.95	314.74	-261.50	-171.75	131
Q4-22	361.01	278.13	-236.75	-141.25	124
Q1-23	340.02	257.22	-219.50	-125.75	120
Q2-23	332.56	245.66	-212.50	-118.25	120
CAL23	326.26	247.14	-205.25	-119.25	121

FIS Fuel Oil Daily Evening Report

London +44 20 7090 1134 - info@freightinvestor.com | Singapore +65 6535 5189 - info@freightinvestor.asia | Shanghai +86 21 63012568

19 April 2022

TIME SPREADS FUEL

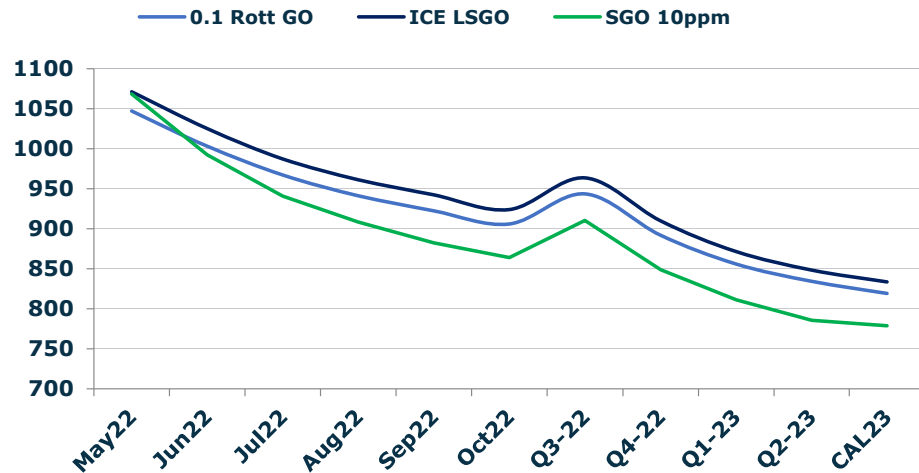
	Barges 3.5	S 380	Rott 0.5%	Sing 0.5%
May22/Jun22	-2.25	13.75	20.75	24.50
Jun22/Jul22	2.25	7.50	16.00	17.50
Jul22/Aug22	4.75	8.00	10.75	14.25
Aug22/Sep22	7.00	9.00	10.25	11.50
Sep22/Oct22	9.00	9.00	9.75	10.00
Q3-22/Q4-22	22.75	24.98	29.15	31.32
Q4-22/Q1-23	17.50	16.67	21.17	22.00
Q1-23/Q2-23	15.58	13.92	16.08	18.00
CAL23/CAL24	36.75	33.50	37.8	16.27

GASOIL CURVES

	Rott 0.1	SGO 10ppm	ICE GO
May22	1047.2	1068.2	1071.2
Jun22	1003.2	992.2	1025.2
Jul22	967.3	940.8	987.3
Aug22	941.3	908.4	961.3
Sep22	922.4	882.3	942.4
Oct22	906.0	864.1	924.0
Q3-22	943.7	910.4	963.7
Q4-22	892.0	848.8	910.0
Q1-23	856.2	811.2	871.5
Q2-23	834.5	785.7	848.5
CAL23	819.2	779.0	833.6

EW SPREAD

	EW380	EW0.5%
May22	48.00	44.45
Jun22	32.00	40.70
Jul22	26.75	39.20
Aug22	23.50	35.70
Sep22	21.50	34.45
Oct22	21.50	34.20
Q3-22	23.90	36.45
Q4-22	21.67	34.28
Q1-23	22.50	33.45
Q2-23	24.17	31.53
CAL23	25.50	31.26



Contact US:

Luke Longhurst

Email: lukel@freightinvestor.com

Mobile: (+44) 7966 968761

Ricky Forman

Email: rickyf@freightinvestor.com

Mobile: (+44) 7868 708719

Sam Twyford

Email: samt@freightinvestor.com

Mobile: (+44) 7729 118643

Jessie Deng

Email: jessied@freightinvestor.com

Mobile: (+86) 13524516743

Jarryd Smith

Email: jarryds@freightinvestor.com

Mobile: (+65) 8798 4987

The information provided in this communication is not intended for retail clients. It is general in nature only and does not constitute advice or an offer to sell, or the solicitation of an offer to purchase any swap or other financial instruments, nor constitute any recommendation on our part. The information has been prepared without considering your investment objectives, financial situation, or knowledge and experience. This material is not a research report and is not intended as such. FIS is not responsible for any trading decisions taken based on this communication. Trading swaps and over-the-counter derivatives, exchange-traded derivatives, and options involve substantial risk and are not suitable for all investors. You are advised to perform an independent investigation to determine whether a transaction is suitable for you. No part of this material may be copied or duplicated in any form by any means or redistributed without our prior written consent. Freight Investor Services Ltd (FIS) is authorised and regulated by the Financial Conduct Authority (FRN: 211452) and is a member of the National Futures Association ("NFA"). Freight Investor Services PTE Ltd ('FIS PTE') is a private limited company, incorporated and registered in Singapore with company number 200603922G, and has subsidiary offices in India and Shanghai. Freight Investor Solutions DMCC ('FIS DMCC') is a private limited company, incorporated and registered in Dubai with company number DMCC1225. Further information about FIS including the location of its offices can be found on our website at freightinvestorservices.com