



# Fuel Oil Daily Evening Report

London +44 20 7090 1134 - info@freightinvestor.com | Singapore +65 6535 5189 - info@freightinvestor.asia | Shanghai +86 21 63012568

## 11 May 2022

### Oil and Energy Market News

Brent crude oil front month futures ended the day up, printing \$107.07 at 1630BST. Highs in the day reached \$107.80 and lows touched \$101.30.

EIA data, week ending 5/6

Crude oil: +8.5M

Domestic prod: 11.8MMbpd

SPR: -7.0M

Cushing: -0.6M

Gasoline: -3.6M

Impld mogas demand: 8.70Mbpd

Distillates: -0.9M

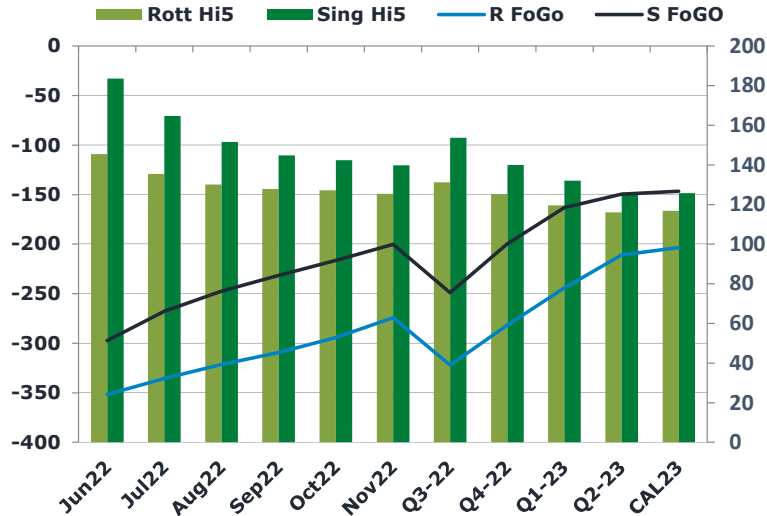
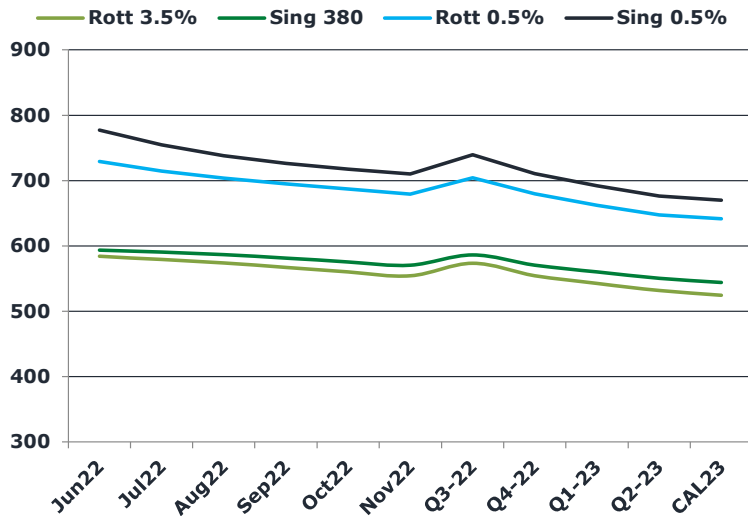
Refiner utilz: 90.0%

Total exports: 8.78Mbpd

### Brent

107.07

	Barges 3.5 %	Sing 380cst	Rott 0.5%	Sing 0.5%	Sing Hi5
Jun22	583.85	593.60	729.25	777.20	184
Jul22	579.10	590.35	714.50	754.95	165
Aug22	573.60	586.35	703.75	737.95	152
Sep22	567.10	581.35	695.00	726.20	145
Oct22	559.85	575.35	687.00	717.70	142
Nov22	554.10	570.35	679.50	710.20	140
Q3-22	573.25	586.00	704.40	739.70	154
Q4-22	554.43	570.60	679.75	710.53	140
Q1-23	542.35	559.85	662.00	691.95	132
Q2-23	531.52	550.35	647.50	676.20	126
CAL23	524.52	543.98	641.31	669.64	126



### Fuel Oil Market News

The Barges crack opened at -14.00 this morning and ended the day printing -13.70. The Cal 23 crack was valued at -9.50.

The Singapore 0.5% crack ended the day trading at 16.75, with the Rott 0.5% crack printing 9.20 on both front months, respectively.

	Rott GOFO	Sing GOFO	R FoGo	S FoGo	Rott Hi5
Jun22	497.42	481.17	-352.00	-297.50	145
Jul22	470.78	432.27	-335.50	-267.75	135
Aug22	451.43	399.02	-321.25	-247.50	130
Sep22	437.45	376.46	-309.50	-231.50	128
Oct22	421.36	358.62	-294.25	-216.25	127
Nov22	399.74	340.15	-274.25	-200.25	125
Q3-22	453.25	402.62	-322.00	-249.00	131
Q4-22	406.73	339.53	-281.50	-199.50	125
Q1-23	363.65	295.02	-244.00	-163.00	120
Q2-23	326.82	275.34	-210.75	-149.50	116
CAL23	320.32	272.34	-203.50	-146.75	117

# FIS Fuel Oil Daily Evening Report

London +44 20 7090 1134 - info@freightinvestor.com | Singapore +65 6535 5189 - info@freightinvestor.asia | Shanghai +86 21 63012568

## 11 May 2022

### TIME SPREADS FUEL

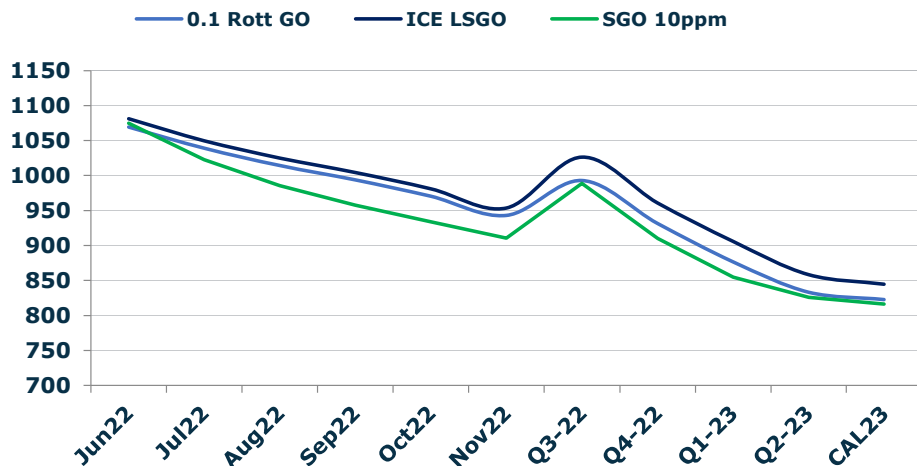
	Barges 3.5	S 380	Rott 0.5%	Sing 0.5%
Jun22/Jul22	4.75	3.25	14.75	22.25
Jul22/Aug22	5.50	4.00	10.75	17.00
Aug22/Sep22	6.50	5.00	8.75	11.75
Sep22/Oct22	7.25	6.00	8.00	8.50
Oct22/Nov22	5.75	5.00	7.50	7.50
Q3-22/Q4-22	18.82	15.40	24.65	29.17
Q4-22/Q1-23	12.08	10.75	17.75	18.58
Q1-23/Q2-23	10.83	9.50	14.50	15.75
CAL23/CAL24	44.50	42.50	43.3	45.16

### GASOIL CURVES

	Rott 0.1	SGO 10ppm	ICE GO
Jun22	1069.3	1074.8	1081.3
Jul22	1039.1	1022.6	1049.9
Aug22	1014.3	985.4	1025.0
Sep22	993.8	957.8	1004.6
Oct22	970.5	934.0	981.2
Nov22	943.1	910.5	953.8
Q3-22	992.9	988.6	1026.5
Q4-22	931.7	910.1	961.2
Q1-23	876.7	854.9	906.0
Q2-23	833.4	825.7	858.3
CAL23	822.6	816.3	844.8

### EW SPREAD

	EW380	EW0.5%
Jun22	9.75	47.95
Jul22	11.25	40.45
Aug22	12.75	34.20
Sep22	14.25	31.20
Oct22	15.50	30.70
Nov22	16.25	30.70
Q3-22	12.75	35.30
Q4-22	16.17	30.78
Q1-23	17.50	29.95
Q2-23	18.83	28.70
CAL23	23.00	28.32



### Contact US:

#### Luke Longhurst

Email: lukel@freightinvestor.com

Mobile: (+44) 7966 968761

#### Ricky Forman

Email: rickyf@freightinvestor.com

Mobile: (+44) 7868 708719

#### Sam Twyford

Email: samt@freightinvestor.com

Mobile: (+44) 7729 118643

#### Jessie Deng

Email: jessied@freightinvestor.com

Mobile: (+86) 13524516743

#### Jarryd Smith

Email: jarryds@freightinvestor.com

Mobile: (+65) 8798 4987

The information provided in this communication is not intended for retail clients. It is general in nature only and does not constitute advice or an offer to sell, or the solicitation of an offer to purchase any swap or other financial instruments, nor constitute any recommendation on our part. The information has been prepared without considering your investment objectives, financial situation, or knowledge and experience. This material is not a research report and is not intended as such. FIS is not responsible for any trading decisions taken based on this communication. Trading swaps and over-the-counter derivatives, exchange-traded derivatives, and options involve substantial risk and are not suitable for all investors. You are advised to perform an independent investigation to determine whether a transaction is suitable for you. No part of this material may be copied or duplicated in any form by any means or redistributed without our prior written consent. Freight Investor Services Ltd (FIS) is authorised and regulated by the Financial Conduct Authority (FRN: 211452) and is a member of the National Futures Association ("NFA"). Freight Investor Services PTE Ltd ('FIS PTE') is a private limited company, incorporated and registered in Singapore with company number 200603922G, and has subsidiary offices in India and Shanghai. Freight Investor Solutions DMCC ('FIS DMCC') is a private limited company, incorporated and registered in Dubai with company number DMCC1225. Further information about FIS including the location of its offices can be found on our website at [freightinvestorservices.com](http://freightinvestorservices.com)