

# FIS Fuel Oil Daily Evening Report

London +44 20 7090 1134 - info@freightinvestor.com | Singapore +65 6535 5189 - info@freightinvestor.asia | Shanghai +86 21 63012568

17 May 2022

## Oil and Energy Market News

Brent crude oil front month futures ended the day up, printing \$114.24 at 1630BST. Highs in the day reached \$115.69 and lows touched \$113.64.

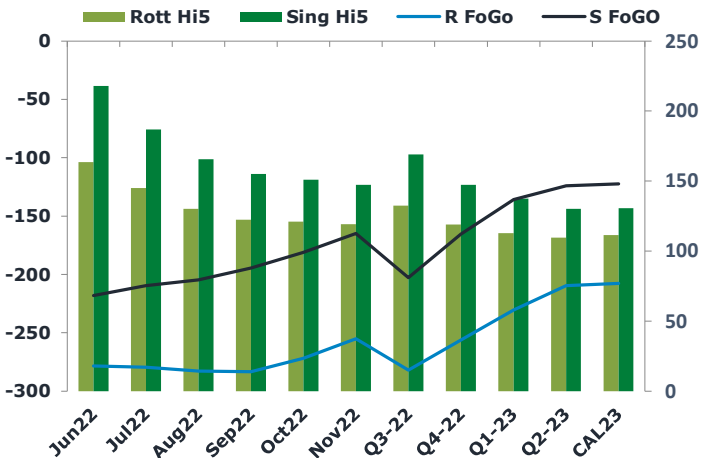
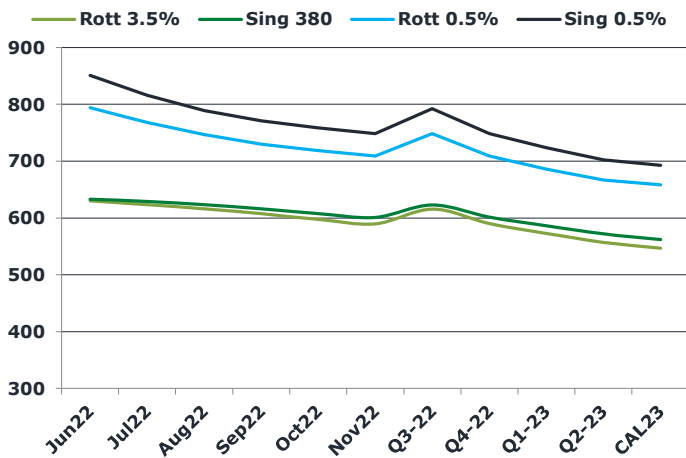
US TREASURY SECRETARY YELLEN: TARIFFS ON RUSSIAN OIL COULD BE COMBINED WITH A PHASED OIL EMBARGO.

Italian energy giant Eni opens ruble and euro accounts to pay for Russian gas.

## Brent

114.24

	Barges 3.5 %	Sing 380cst	Rott 0.5%	Sing 0.5%	Sing Hi5
Jun22	630.40	633.15	793.90	851.05	218
Jul22	623.40	629.15	768.40	816.05	187
Aug22	616.15	623.40	746.40	789.05	166
Sep22	607.65	616.15	730.15	771.30	155
Oct22	597.40	607.65	718.65	758.55	151
Nov22	589.65	600.90	708.90	748.30	147
Q3-22	615.75	622.90	748.30	792.15	169
Q4-22	589.98	601.23	709.15	748.63	147
Q1-23	572.90	586.15	685.65	723.63	137
Q2-23	557.15	571.90	666.65	702.13	130
CAL23	546.59	561.98	658.05	692.76	131



## Fuel Oil Market News

The Barges crack opened at -14.0 this morning and ended the day printing -12.75. The Cal 23 crack was valued at -8.90.

The Singapore 0.5% crack ended the day trading at 22, with the Rott 0.5% crack printing 13.00 on both front months, respectively.

	Rott GOFO	Sing GOFO	R FoGo	S FoGO	Rott Hi5
Jun22	441.73	435.98	-278.25	-218.00	164
Jul22	424.13	396.39	-279.25	-209.50	145
Aug22	413.10	370.48	-282.75	-204.75	130
Sep22	405.83	349.42	-283.25	-194.25	123
Oct22	393.04	331.85	-271.75	-181.00	121
Nov22	374.18	312.52	-255.00	-165.00	119
Q3-22	414.35	372.05	-281.75	-202.75	133
Q4-22	375.53	312.68	-256.25	-165.25	119
Q1-23	342.90	273.13	-230.25	-135.75	113
Q2-23	319.32	254.23	-209.75	-124.00	110
CAL23	318.90	252.91	-207.50	-122.25	111

# FIS Fuel Oil Daily Evening Report

London +44 20 7090 1134 - info@freightinvestor.com | Singapore +65 6535 5189 - info@freightinvestor.asia | Shanghai +86 21 63012568

17 May 2022

## TIME SPREADS FUEL

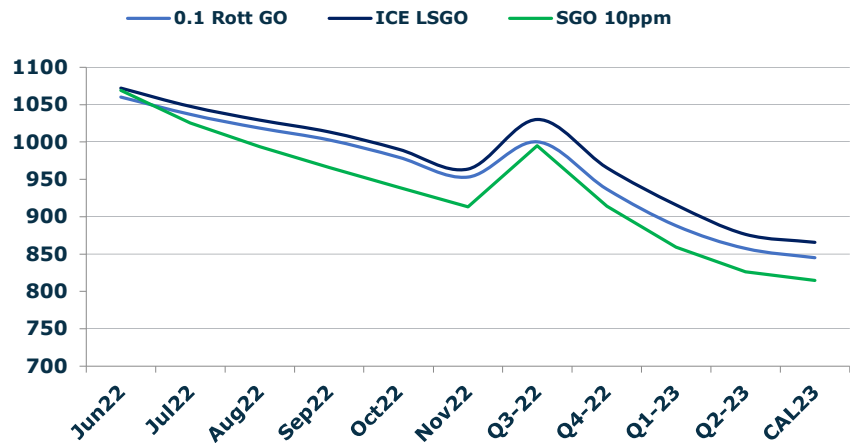
	Barges 3.5	S 380	Rott 0.5%	Sing 0.5%
Jun22/Jul22	7.00	4.00	25.50	35.00
Jul22/Aug22	7.25	5.75	22.00	27.00
Aug22/Sep22	8.50	7.25	16.25	17.75
Sep22/Oct22	10.25	8.50	11.50	12.75
Oct22/Nov22	7.75	6.75	9.75	10.25
Q3-22/Q4-22	25.77	21.67	39.15	43.52
Q4-22/Q1-23	17.08	15.08	23.50	25.00
Q1-23/Q2-23	15.75	14.25	19.00	21.50
CAL23/CAL24	53.18	43.39	46.6	51.17

## GASOIL CURVES

	Rott 0.1	SGO 10ppm	ICE GO
Jun22	1060.1	1069.1	1072.1
Jul22	1036.8	1025.5	1047.5
Aug22	1018.5	993.9	1029.3
Sep22	1002.7	965.6	1013.5
Oct22	979.7	939.5	990.4
Nov22	953.1	913.4	963.8
Q3-22	1000.3	994.9	1030.1
Q4-22	936.9	913.9	965.5
Q1-23	887.8	859.3	915.8
Q2-23	857.3	826.1	876.5
CAL23	844.9	814.9	865.5

## EW SPREAD

	EW380	EW0.5%
Jun22	2.75	57.15
Jul22	5.75	47.65
Aug22	7.25	42.65
Sep22	8.50	41.15
Oct22	10.25	39.90
Nov22	11.25	39.40
Q3-22	7.15	43.85
Q4-22	11.25	39.48
Q1-23	13.25	37.98
Q2-23	14.75	35.48
CAL23	20.00	34.71



## Contact US:

**Luke Longhurst**

Email: lukel@freightinvestor.com

Mobile: (+44) 7966 968761

**Jessie Deng**

Email: jessied@freightinvestor.com

Mobile: (+86) 13524516743

**Ricky Forman**

Email: rickyf@freightinvestor.com

Mobile: (+44) 7868 708719

**Jarryd Smith**

Email: jarryds@freightinvestor.com

Mobile: (+65) 8798 4987

**Sam Twyford**

Email: samt@freightinvestor.com

Mobile: (+44) 7729 118643

The information provided in this communication is not intended for retail clients. It is general in nature only and does not constitute advice or an offer to sell, or the solicitation of an offer to purchase any swap or other financial instruments, nor constitute any recommendation on our part. The information has been prepared without considering your investment objectives, financial situation, or knowledge and experience. This material is not a research report and is not intended as such. FIS is not responsible for any trading decisions taken based on this communication. Trading swaps and over-the-counter derivatives, exchange-traded derivatives, and options involve substantial risk and are not suitable for all investors. You are advised to perform an independent investigation to determine whether a transaction is suitable for you. No part of this material may be copied or duplicated in any form by any means or redistributed without our prior written consent. Freight Investor Services Ltd (FIS) is authorised and regulated by the Financial Conduct Authority (FRN: 211452) and is a member of the National Futures Association ("NFA"). Freight Investor Services PTE Ltd ('FIS PTE') is a private limited company, incorporated and registered in Singapore with company number 200603922G, and has subsidiary offices in India and Shanghai. Freight Investor Solutions DMCC ('FIS DMCC') is a private limited company, incorporated and registered in Dubai with company number DMCC1225. Further information about FIS including the location of its offices can be found on our website at [freightinvestorservices.com](http://freightinvestorservices.com)