



# Supramax & Handysize FFA Daily Report

London +44 20 7090 1120 - info@freightinvestor.com | Singapore +65 6535 5189 - info@freightinvestor.asia  
 Shanghai +86 21 6335 4002 | Dubai +971 4 4493900

04 May 2022

### Supramax Commentary

A positive day for Supramax paper, with rates pushing across the curve despite a relatively flat but supported underlying. Following the larger sizes, May and June pushed to respective highs of \$32000 and \$33150. Gains extended through to the back of the curve, with Cal23 pushing to \$17750 high. Cal25 and Cal26 ticked up to \$13750 and \$13250. We close supported across the curve. Have a nice evening.

### Handysize Commentary

Handysize paper rates ticked up across the curve. Cal24 was the only reported trade at \$14400.

### Supramax 10 Time Charter Average

Spot	30054	Chg	-4
MTD	30056		
YTD	26097		

### Handysize 7 Time Charter Average

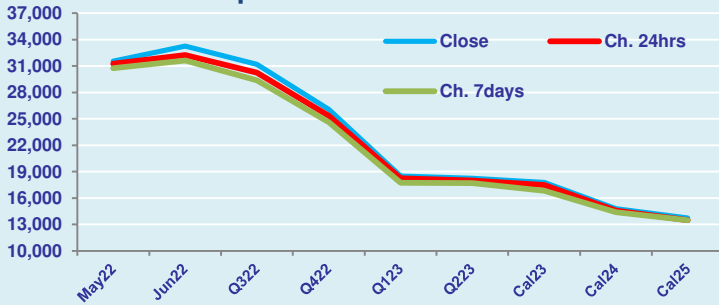
Spot	29158	Chg	191
MTD	29063		
YTD	25056		

### Spread Ratio

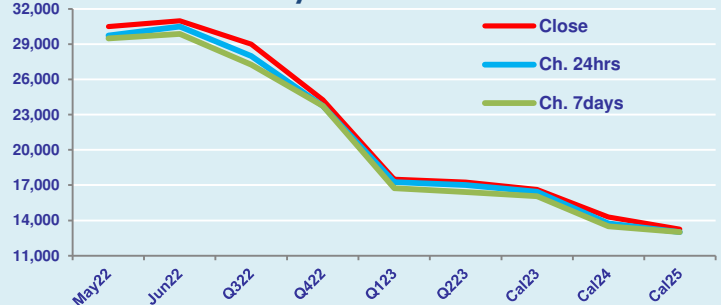
Spread	896	Ratio	1.03
	994		1.03
	1041		1.04

Per	Bid	Offer	Mid	Chg	Per	Bid	Offer	Mid	Chg	Spread	Ratio
May 22	31350	31750	31550	300	May 22	30250	30750	30500	750	1050	1.03
Jun 22	33000	33500	33250	1000	Jun 22	30750	31250	31000	500	2250	1.07
Q3 22	31000	31400	31200	950	Q3 22	28750	29250	29000	1000	2200	1.08
Q4 22	25850	26250	26050	700	Q4 22	24000	24500	24250	500	1800	1.07
Q1 23	18300	18700	18500	250	Q1 23	17250	17750	17500	250	1000	1.06
Q2 23	18000	18500	18250	250	Q2 23	17000	17500	17250	250	1000	1.06
Cal 23	17650	17900	17775	275	Cal 23	16500	16750	16625	175	1150	1.07
Cal 24	14600	15000	14800	225	Cal 24	14100	14500	14300	550	500	1.03
Cal 25	13500	14000	13750	250	Cal 25	13000	13500	13250	250	500	1.04

FIS Supramax Forward Curve



FIS Handy Forward Curve



Spot Price Source: Baltic

**Disclaimer:** The information provided in this communication is not intended for retail clients. It is general in nature only and does not constitute advice or an offer to sell, or the solicitation of an offer to purchase any swap or other financial instruments, nor constitute any recommendation on our part. The information has been prepared without considering your investment objectives, financial situation, or knowledge and experience. This material is not a research report and is not intended as such. FIS is not responsible for any trading decisions taken based on this communication. Trading swaps and over-the-counter derivatives, exchange-traded derivatives, and options involve substantial risk and are not suitable for all investors. You are advised to perform an independent investigation to determine whether a transaction is suitable for you. No part of this material may be copied or duplicated in any form by any means or redistributed without our prior written consent. Freight Investor Services Ltd (FIS) is authorised and regulated by the Financial Conduct Authority (FRN: 211452) and is a member of the National Futures Association ("NFA"). Freight Investor Services PTE Ltd ("FIS PTE") is a private limited company, incorporated and registered in Singapore with company number 200603922G, and has subsidiary offices in India and Shanghai. Freight Investor Solutions DMCC ("FIS DMCC") is a private limited company, incorporated and registered in Dubai with company number DMCC1225. Further information about FIS including the location of its offices can be found on our website at [www.freightinvestorservices.com](http://www.freightinvestorservices.com)