



# Supramax & Handysize FFA Daily Report

London +44 20 7090 1120 - info@freightinvestor.com | Singapore +65 6535 5189 - info@freightinvestor.asia  
 Shanghai +86 21 6335 4002 | Dubai +971 4 4493900

29 June 2022

### Supramax Commentary

Another volatile day for Supramax paper with rates coming under pressure in early trading before retracing in the afternoon session. Q3 made up most of the day's volume, closing \$250 down on the day. The deferred periods continue to tick down, with Cal23 trading a number of times at \$15000 and Cal24 trading to \$12600 low. We close slightly off the lows on the backend. Have a nice evening.

### Handysize Commentary

Handysize paper rates continue to drift across the curve, with sellers chasing a thin bidside. Cal23 was the only reported trade, printing \$14200.

### Supramax 10 Time Charter Average

Spot	25951	Chg	-621
MTD	27466		
YTD	26996		

### Handysize 7 Time Charter Average

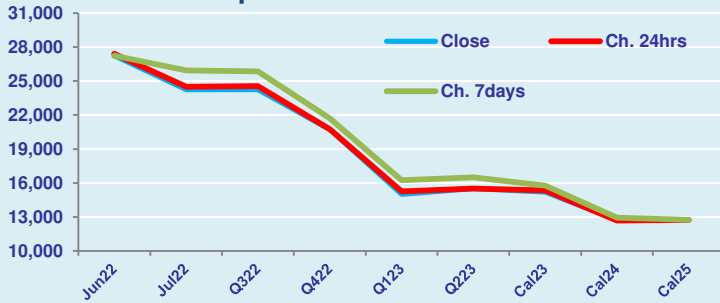
Spot	23348	Chg	-283
MTD	25128		
YTD	25804		

### Spread Ratio

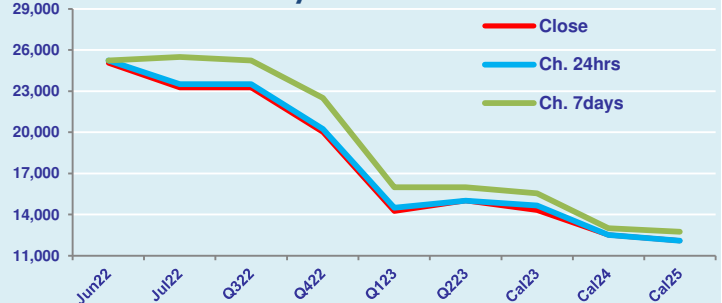
2603	1.11
2338	1.09
1192	1.05

Per	Bid	Offer	Mid	Chg	Per	Bid	Offer	Mid	Chg	Spread	Ratio
Jun 22	27000	27500	27250	-150	Jun 22	24850	25250	25050	-200	2200	1.09
Jul 22	24000	24500	24250	-250	Jul 22	23000	23500	23250	-250	1000	1.04
Q3 22	24000	24500	24250	-300	Q3 22	23000	23500	23250	-250	1000	1.04
Q4 22	20600	20850	20725	-25	Q4 22	19750	20250	20000	-250	725	1.04
Q1 23	14750	15250	15000	-250	Q1 23	14000	14500	14250	-250	750	1.05
Q2 23	15250	15750	15500	0	Q2 23	14750	15250	15000	0	500	1.03
Cal 23	15100	15300	15200	-150	Cal 23	14100	14500	14300	-350	900	1.06
Cal 24	12600	12850	12725	25	Cal 24	12250	12750	12500	0	225	1.02
Cal 25	12500	13000	12750	0	Cal 25	11850	12350	12100	0	650	1.05

FIS Supramax Forward Curve



FIS Handy Forward Curve



Spot Price Source: Baltic

**Disclaimer:** The information provided in this communication is not intended for retail clients. It is general in nature only and does not constitute advice or an offer to sell, or the solicitation of an offer to purchase any swap or other financial instruments, nor constitute any recommendation on our part. The information has been prepared without considering your investment objectives, financial situation, or knowledge and experience. This material is not a research report and is not intended as such. FIS is not responsible for any trading decisions taken based on this communication. Trading swaps and over-the-counter derivatives, exchange-traded derivatives, and options involve substantial risk and are not suitable for all investors. You are advised to perform an independent investigation to determine whether a transaction is suitable for you. No part of this material may be copied or duplicated in any form by any means or redistributed without our prior written consent. Freight Investor Services Ltd (FIS) is authorised and regulated by the Financial Conduct Authority (FRN: 211452) and is a member of the National Futures Association ("NFA"). Freight Investor Services PTE Ltd ("FIS PTE") is a private limited company, incorporated and registered in Singapore with company number 200603922G, and has subsidiary offices in India and Shanghai. Freight Investor Solutions DMCC ("FIS DMCC") is a private limited company, incorporated and registered in Dubai with company number DMCC1225. Further information about FIS including the location of its offices can be found on our website at [www.freightinvestorservices.com](http://www.freightinvestorservices.com)