



London Iron Ore Market Report

London +44 (0) 20 7090 1120 - info@freightinvestor.com | Singapore +65 6535 5189 - info@freightinvestor.asia

03 August 2022

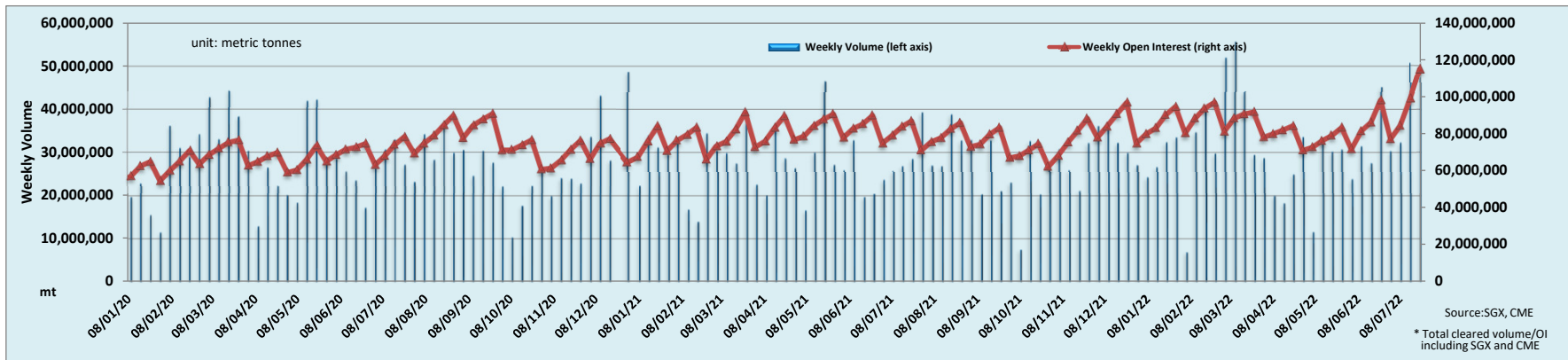
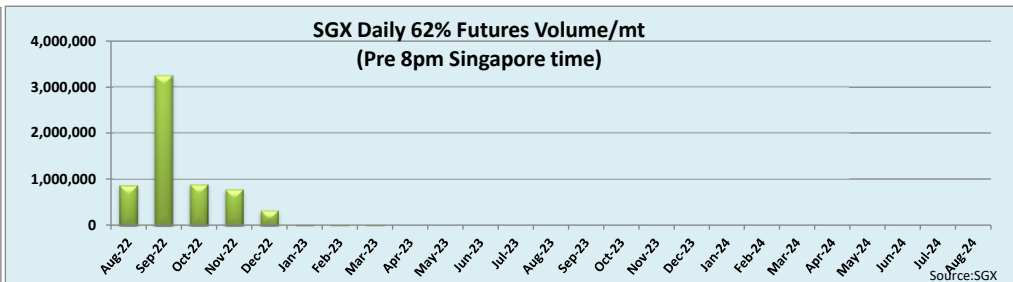
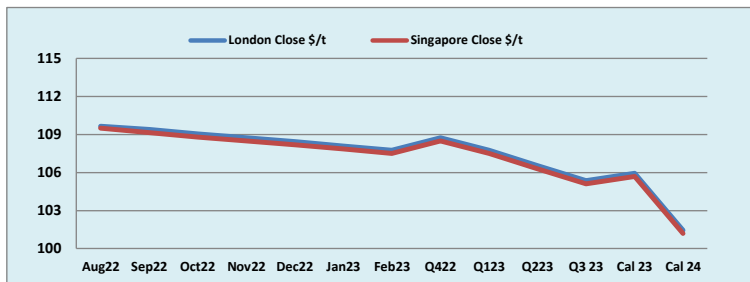
The T+1 session was highly volatile with Sep trading \$111.00 just before the open, jumping to \$112.50 on the open and then retreating to \$110.00 within the first 10 mins. Prices did stabilise from there hovering between \$111.50 and \$111.00 before sliding in the last 20 minutes to close \$109.40. Aug/sep was aggressively sold in some size at \$0.15, and Sep/Jan found liquidity in clips as high as 83kt at \$1.30.

INDEX	Price	Change	MTD
Platts IO 62%	\$108.10	-\$5.20	\$111.43

INDEX	Price	Change	MTD
MB IO 65%	\$119.90	-\$4.80	\$122.93

INDEX	Price	Change	MTD
Platts Lump Prem	\$0.0940	\$0.0000	\$0.0925

Iron Ore 62% Futures	Aug 22	Sep 22	Oct 22	Nov 22	Dec 22	Jan 23	Feb 23	Q4 22	Q1 23	Q2 23	Q3 23	Cal 23	Cal 24
London Close \$/t	109.65	109.40	109.05	108.75	108.45	108.10	107.75	108.75	107.75	106.55	105.35	105.95	101.45
Singapore Close \$/t	109.50	109.15	108.80	108.50	108.20	107.85	107.50	108.50	107.50	106.30	105.10	105.70	101.20
Change	+0.14%	+0.23%	+0.23%	+0.23%	+0.23%	+0.23%	+0.23%	+0.23%	+0.23%	+0.24%	+0.24%	+0.24%	+0.25%



Disclaimer: The information provided in this communication is not intended for retail clients. It is general in nature only and does not constitute advice or an offer to sell, or the solicitation of an offer to purchase any swap or other financial instruments, nor constitute any recommendation on our part. The information has been prepared without considering your investment objectives, financial situation, or knowledge and experience. This material is not a research report and is not intended as such. FIS is not responsible for any trading decisions taken based on this communication. Trading swaps and over-the-counter derivatives, exchange-traded derivatives, and options involve substantial risk and are not suitable for all investors. You are advised to perform an independent investigation to determine whether a transaction is suitable for you. No part of this material may be copied or duplicated in any form by any means or redistributed without our prior written consent. Freight Investor Services Ltd (FIS) is authorised and regulated by the Financial Conduct Authority (FRN: 211452) and is a member of the National Futures Association ("NFA"). Freight Investor Services PTE Ltd ('FIS PTE') is a private limited company, incorporated and registered in Singapore with company number 200603922G, and has subsidiary offices in India and Shanghai. Freight Investor Solutions DMCC ('FIS DMCC') is a private limited company, incorporated and registered in Dubai with company number DMCC1225. Further information about FIS including the location of its offices can be found on our website at www.freightinvestorservices.com