



# Supramax & Handysize FFA Daily Report

London +44 20 7090 1120 - info@freightinvestor.com | Singapore +65 6535 5189 - info@freightinvestor.asia  
 Shanghai +86 21 6335 4002 | Dubai +971 4 4493900

21 September 2022

### Supramax Commentary

Supramax paper rates softened across the curve, despite another push in the index. Q4 and Q1 slipped to respective lows of \$17400 and \$12000. Buyers returned to the market in the afternoon, and we close off of the lows of the day. Have a nice evening.

### Handysize Commentary

Handysize paper prompt rates ticked up, with Dec and Q4 trading to respective highs of \$15900 and \$17000. The backend remains rangebound, with Cal24+Cal25 printing \$12500.

### Supramax 10 Time Charter Average

Spot	17657	Chg	275
MTD	16672		
YTD	24742		

### Handysize 7 Time Charter Average

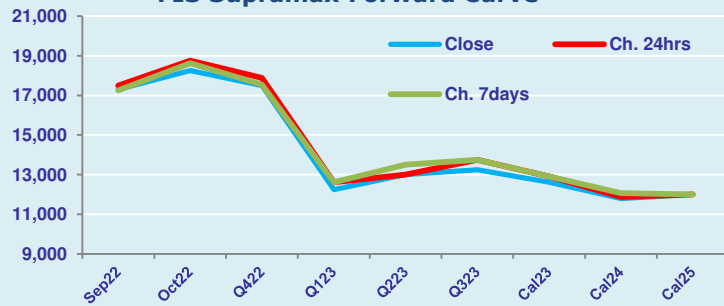
Spot	16804	Chg	228
MTD	15919		
YTD	23582		

### Spread Ratio

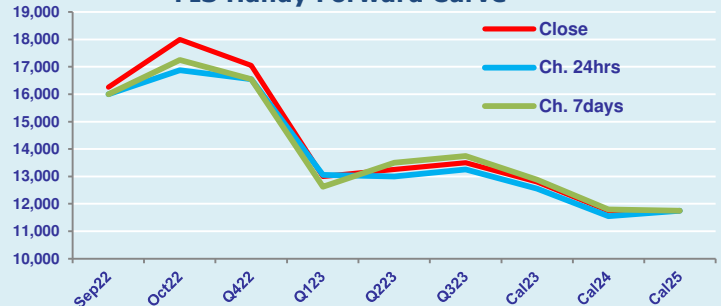
853	1.05
754	1.05
1159	1.05

Per	Bid	Offer	Mid	Chg	Per	Bid	Offer	Mid	Chg	Spread	Ratio
Sep 22	17100	17500	17300	-200	Sep 22	16000	16500	16250	250	1050	1.06
Oct 22	18000	18500	18250	-500	Oct 22	17750	18250	18000	1125	250	1.01
Q4 22	17250	17750	17500	-375	Q4 22	16850	17250	17050	500	450	1.03
Q1 23	12100	12400	12250	-375	Q1 23	12750	13250	13000	-50	-750	0.94
Q2 23	12750	13250	13000	0	Q2 23	13000	13500	13250	250	-250	0.98
Q3 23	13000	13500	13250	-500	Q3 23	13250	13750	13500	250	-250	0.98
Cal 23	12500	12750	12625	-275	Cal 23	12600	13000	12800	250	-175	0.99
Cal 24	11600	12000	11800	-75	Cal 24	11500	12000	11750	200	50	1.00
Cal 25	11750	12250	12000	0	Cal 25	11500	12000	11750	0	250	1.02

FIS Supramax Forward Curve



FIS Handy Forward Curve



Spot Price Source: Baltic

Disclaimer: The information provided in this communication is not intended for retail clients. It is general in nature only and does not constitute advice or an offer to sell, or the solicitation of an offer to purchase any swap or other financial instruments, nor constitute any recommendation on our part. The information has been prepared without considering your investment objectives, financial situation, or knowledge and experience. This material is not a research report and is not intended as such. FIS is not responsible for any trading decisions taken based on this communication. Trading swaps and over-the-counter derivatives, exchange-traded derivatives, and options involve substantial risk and are not suitable for all investors. You are advised to perform an independent investigation to determine whether a transaction is suitable for you. No part of this material may be copied or duplicated in any form by any means or redistributed without our prior written consent. Freight Investor Services Ltd (FIS) is authorised and regulated by the Financial Conduct Authority (FRN: 211452) and is a member of the National Futures Association ("NFA"). Freight Investor Services PTE Ltd ("FIS PTE") is a private limited company, incorporated and registered in Singapore with company number 200603922G, and has subsidiary offices in India and Shanghai. Freight Investor Solutions DMCC ("FIS DMCC") is a private limited company, incorporated and registered in Dubai with company number DMCC1225. Further information about FIS including the location of its offices can be found on our website at [www.freightinvestorservices.com](http://www.freightinvestorservices.com)