



# Supramax & Handysize FFA Daily Report

London +44 20 7090 1120 - info@freightinvestor.com | Singapore +65 6535 5189 - info@freightinvestor.asia  
 Shanghai +86 21 6335 4002 | Dubai +971 4 4493900

12 October 2022

### Supramax Commentary

A quiet day for Supramax paper, with rates softening on the prompt. With spot rate now coming back down, Nov and Dec traded to respective lows of \$17250 and \$16150. Q1 slipped to \$12400 low. We close supported at the day's lows. Have a nice evening. Have a nice evening.

### Handysize Commentary

A quiet day for Handysize paper, with prompt rates softening. Dec and March werethe only reported trades, printing \$15750 and \$12500 respectively.

### Supramax 10 Time Charter Average

Spot	18788	Chg	-68
MTD	18616		
YTD	24258		

### Handysize 7 Time Charter Average

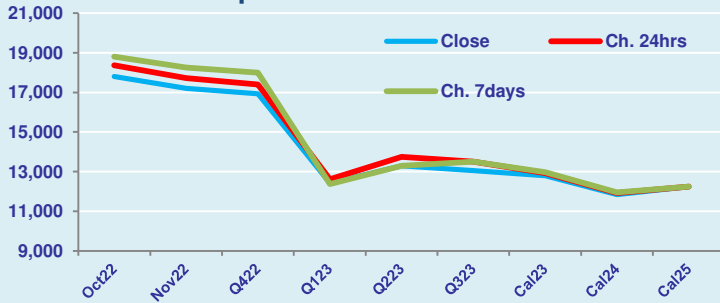
Spot	18433	Chg	-151
MTD	18459		
YTD	23160		

### Spread Ratio

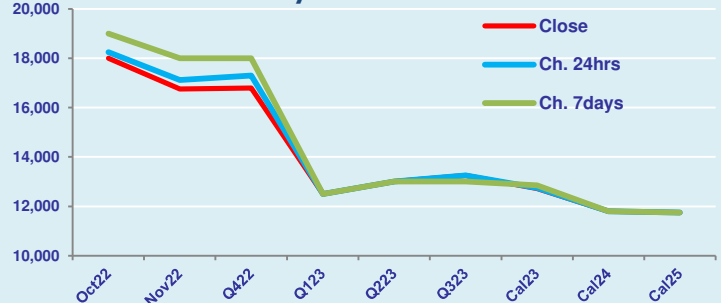
Spread	355	Ratio	1.02
	157		1.01
	1098		1.05

Per	Bid	Offer	Mid	Chg	Per	Bid	Offer	Mid	Chg	Spread	Ratio
Oct 22	17600	18000	17800	-575	Oct 22	17750	18250	18000	-250	-200	0.99
Nov 22	17000	17400	17200	-525	Nov 22	16500	17000	16750	-375	450	1.03
Q4 22	16750	17100	16925	-475	Q4 22	16600	17000	16800	-500	125	1.01
Q1 23	12250	12600	12425	-200	Q1 23	12250	12750	12500	0	-75	0.99
Q2 23	13100	13500	13300	-450	Q2 23	12750	13250	13000	0	300	1.02
Q3 23	12850	13250	13050	-450	Q3 23	13000	13500	13250	0	-200	0.98
Cal 23	12700	12900	12800	-125	Cal 23	12600	12850	12725	-25	75	1.01
Cal 24	11750	11950	11850	-75	Cal 24	11600	12000	11800	0	50	1.00
Cal 25	12000	12500	12250	0	Cal 25	11500	12000	11750	0	500	1.04

FIS Supramax Forward Curve



FIS Handy Forward Curve



Spot Price Source: Baltic

Disclaimer: The information provided in this communication is not intended for retail clients. It is general in nature only and does not constitute advice or an offer to sell, or the solicitation of an offer to purchase any swap or other financial instruments, nor constitute any recommendation on our part. The information has been prepared without considering your investment objectives, financial situation, or knowledge and experience. This material is not a research report and is not intended as such. FIS is not responsible for any trading decisions taken based on this communication. Trading swaps and over-the-counter derivatives, exchange-traded derivatives, and options involve substantial risk and are not suitable for all investors. You are advised to perform an independent investigation to determine whether a transaction is suitable for you. No part of this material may be copied or duplicated in any form by any means or redistributed without our prior written consent. Freight Investor Services Ltd (FIS) is authorised and regulated by the Financial Conduct Authority (FRN: 211452) and is a member of the National Futures Association ("NFA"). Freight Investor Services PTE Ltd ("FIS PTE") is a private limited company, incorporated and registered in Singapore with company number 200603922G, and has subsidiary offices in India and Shanghai. Freight Investor Solutions DMCC ("FIS DMCC") is a private limited company, incorporated and registered in Dubai with company number DMCC1225. Further information about FIS including the location of its offices can be found on our website at [www.freightinvestorservices.com](http://www.freightinvestorservices.com)