



# Supramax & Handysize FFA Daily Report

London +44 20 7090 1120 - info@freightinvestor.com | Singapore +65 6535 5189 - info@freightinvestor.asia  
 Shanghai +86 21 6335 4002 | Dubai +971 4 4493900

13 October 2022

### Supramax Commentary

A quiet day for Supramax paper, with rates coming under pressure in early trading due to a large drop in the Pacific index. Both Nov and Q4 traded to lows of \$16500. A better than expected Atlantic index led to a quiet but supported afternoon, closing off the lows of the day. Have a nice evening. Have a nice evening.

### Handysize Commentary

A quiet day for Handysize paper, with prompt rates softening following the larger sizes.

### Supramax 10 Time Charter Average

Spot	18654	Chg	-134
MTD	18620		
YTD	24230		

### Handysize 7 Time Charter Average

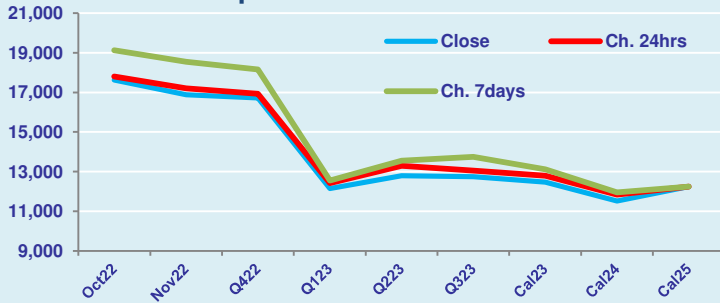
Spot	18362	Chg	-71
MTD	18448		
YTD	23136		

### Spread Ratio

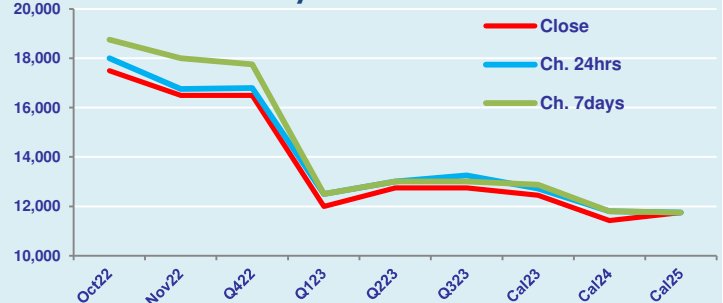
Spread	292	Ratio	1.02
	172		1.01
	1094		1.05

Per	Bid	Offer	Mid	Chg	Per	Bid	Offer	Mid	Chg	Spread	Ratio
Oct 22	17500	17750	17625	-175	Oct 22	17250	17750	17500	-500	125	1.01
Nov 22	16750	17000	16875	-325	Nov 22	16250	16750	16500	-250	375	1.02
Q4 22	16600	16850	16725	-200	Q4 22	16250	16750	16500	-300	225	1.01
Q1 23	12000	12300	12150	-275	Q1 23	11750	12250	12000	-500	150	1.01
Q2 23	12600	13000	12800	-500	Q2 23	12500	13000	12750	-250	50	1.00
Q3 23	12500	13000	12750	-300	Q3 23	12500	13000	12750	-500	0	1.00
Cal 23	12350	12600	12475	-325	Cal 23	12300	12600	12450	-275	25	1.00
Cal 24	11400	11650	11525	-325	Cal 24	11250	11600	11425	-375	100	1.01
Cal 25	12000	12500	12250	0	Cal 25	11500	12000	11750	0	500	1.04

FIS Supramax Forward Curve



FIS Handy Forward Curve



Spot Price Source: Baltic

Disclaimer: The information provided in this communication is not intended for retail clients. It is general in nature only and does not constitute advice or an offer to sell, or the solicitation of an offer to purchase any swap or other financial instruments, nor constitute any recommendation on our part. The information has been prepared without considering your investment objectives, financial situation, or knowledge and experience. This material is not a research report and is not intended as such. FIS is not responsible for any trading decisions taken based on this communication. Trading swaps and over-the-counter derivatives, exchange-traded derivatives, and options involve substantial risk and are not suitable for all investors. You are advised to perform an independent investigation to determine whether a transaction is suitable for you. No part of this material may be copied or duplicated in any form by any means or redistributed without our prior written consent. Freight Investor Services Ltd (FIS) is authorised and regulated by the Financial Conduct Authority (FRN: 211452) and is a member of the National Futures Association ("NFA"). Freight Investor Services PTE Ltd ("FIS PTE") is a private limited company, incorporated and registered in Singapore with company number 200603922G, and has subsidiary offices in India and Shanghai. Freight Investor Solutions DMCC ("FIS DMCC") is a private limited company, incorporated and registered in Dubai with company number DMCC1225. Further information about FIS including the location of its offices can be found on our website at [www.freightinvestorservices.com](http://www.freightinvestorservices.com)