



# Supramax & Handysize FFA Daily Report

London +44 20 7090 1120 - info@freightinvestor.com | Singapore +65 6535 5189 - info@freightinvestor.asia  
 Shanghai +86 21 6335 4002 | Dubai +971 4 4493900

25 October 2022

### Supramax Commentary

Supramax paper rates came under pressure across the curve, with sellers chasing a thin bids side and the index now in negative territory. Nov and Dec traded to respective lows of \$16500 and \$14950. Cal23 made up most of the day's volume, trading down to \$12500. WE close supported at the day's lows. Have a nice evening.

### Handysize Commentary

Handysize paper rates came under pressure, as sellers chased a thin bids side. Nov and Dec traded to respective lows of \$15750 and \$14500. Losses extended into next year, with Q2 and Cal23 both trading down to \$12250.

### Supramax 10 Time Charter Average

Spot	18238	Chg	-135
MTD	18532		
YTD	24002		

### Handysize 7 Time Charter Average

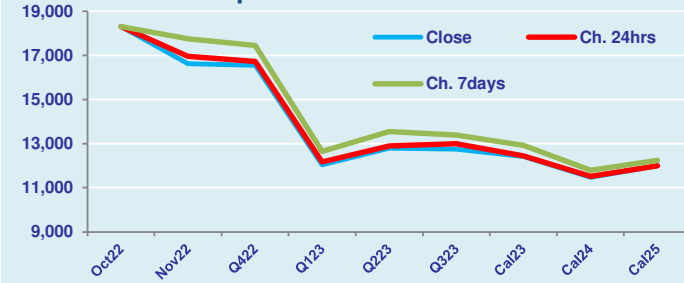
Spot	17154	Chg	-115
MTD	18036		
YTD	22918		

### Spread Ratio

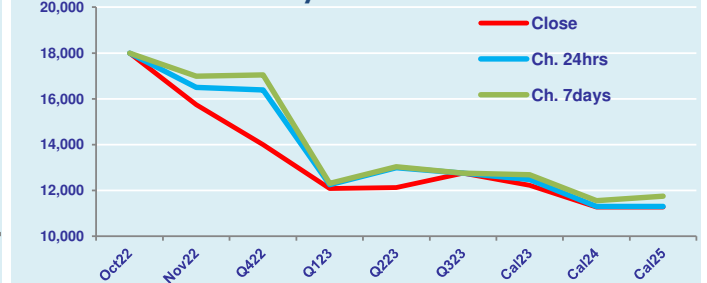
1084	1.06
496	1.03
1085	1.05

Per	Bid	Offer	Mid	Chg	Per	Bid	Offer	Mid	Chg	Spread	Ratio
Oct 22	18100	18500	18300	0	Oct 22	17750	18250	18000	0	300	1.02
Nov 22	16500	16750	16625	-325	Nov 22	15500	16000	15750	-750	875	1.06
Q4 22	16350	16750	16550	-175	Q4 22	13750	14250	14000	-2400	2550	1.18
Q1 23	11850	12250	12050	-125	Q1 23	11900	12250	12075	-175	-25	1.00
Q2 23	12600	13000	12800	-100	Q2 23	12000	12250	12125	-875	675	1.06
Q3 23	12500	13000	12750	-250	Q3 23	12500	13000	12750	0	0	1.00
Cal 23	12350	12500	12425	-25	Cal 23	12100	12350	12225	-250	200	1.02
Cal 24	11350	11600	11475	-50	Cal 24	11100	11450	11275	-25	200	1.02
Cal 25	11750	12250	12000	0	Cal 25	11100	11450	11275	-25	725	1.06

FIS Supramax Forward Curve



FIS Handy Forward Curve



Spot Price Source: Baltic

Disclaimer: The information provided in this communication is not intended for retail clients. It is general in nature only and does not constitute advice or an offer to sell, or the solicitation of an offer to purchase any swap or other financial instruments, nor constitute any recommendation on our part. The information has been prepared without considering your investment objectives, financial situation, or knowledge and experience. This material is not a research report and is not intended as such. FIS is not responsible for any trading decisions taken based on this communication. Trading swaps and over-the-counter derivatives, exchange-traded derivatives, and options involve substantial risk and are not suitable for all investors. You are advised to perform an independent investigation to determine whether a transaction is suitable for you. No part of this material may be copied or duplicated in any form by any means or redistributed without our prior written consent. Freight Investor Services Ltd (FIS) is authorised and regulated by the Financial Conduct Authority (FRN: 211452) and is a member of the National Futures Association ("NFA"). Freight Investor Services PTE Ltd ("FIS PTE") is a private limited company, incorporated and registered in Singapore with company number 200603922G, and has subsidiary offices in India and Shanghai. Freight Investor Solutions DMCC ("FIS DMCC") is a private limited company, incorporated and registered in Dubai with company number DMCC1225. Further information about FIS including the location of its offices can be found on our website at [www.freightinvestorservices.com](http://www.freightinvestorservices.com)