



# Supramax & Handysize FFA Daily Report

London +44 20 7090 1120 - info@freightinvestor.com | Singapore +65 6535 5189 - info@freightinvestor.asia  
 Shanghai +86 21 6335 4002 | Dubai +971 4 4493900

25 November 2022

### Supramax Commentary

An unexciting close to the week on Supramax paper as we continued to trade in a narrow range through most of the day. Dec continued to hold at \$13k while Q1 traded inside \$11250-11350 and Cal23at \$12000-\$12250. We maintained good support at the lower end of the range. Good weekend to all.

### Handysize Commentary

Despite the index Handy paper held onto the weeks earlier with gains ticking up in early trading session before settling into a range bound afternoon.

### Supramax 10 Time Charter Average

Spot	13004	Chg	94
MTD	13427		
YTD	22991		

### Handysize 7 Time Charter Average

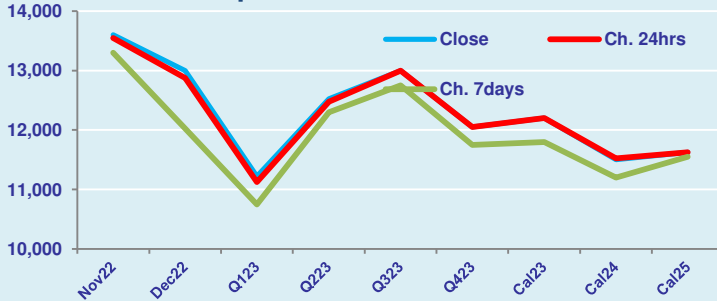
Spot	13403	Chg	-44
MTD	14238		
YTD	22076		

### Spread Ratio

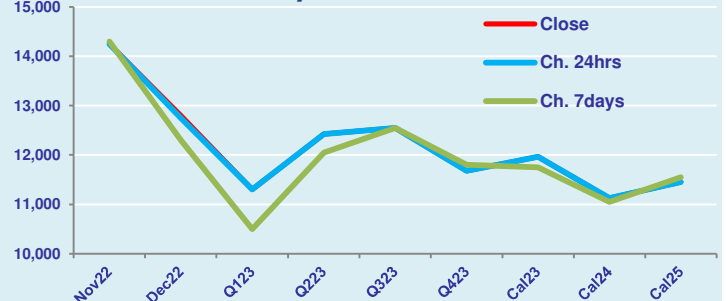
Spread	-399	Ratio	0.97
	-811		0.94
	915		1.04

Per	Bid	Offer	Mid	Chg	Per	Bid	Offer	Mid	Chg	Spread	Ratio
Nov 22	13350	13850	13600	50	Nov 22	14000	14500	14250	0	-650	0.95
Dec 22	12900	13100	13000	125	Dec 22	12600	13000	12800	50	200	1.02
Q1 23	11100	11350	11225	100	Q1 23	11150	11450	11300	0	-75	0.99
Q2 23	12350	12700	12525	50	Q2 23	12250	12600	12425	0	100	1.01
Q3 23	12750	13250	13000	0	Q3 23	12350	12750	12550	0	450	1.04
Q4 23	11850	12250	12050	0	Q4 23	11500	11850	11675	0	375	1.03
Cal 23	12100	12300	12200	0	Cal 23	11825	12100	11963	0	238	1.02
Cal 24	11400	11600	11500	-25	Cal 24	10900	11350	11125	0	375	1.03
Cal 25	11500	11750	11625	0	Cal 25	11250	11650	11450	0	175	1.02

FIS Supramax Forward Curve



FIS Handy Forward Curve



Spot Price Source: Baltic

**Disclaimer:** The information provided in this communication is not intended for retail clients. It is general in nature only and does not constitute advice or an offer to sell, or the solicitation of an offer to purchase any swap or other financial instruments, nor constitute any recommendation on our part. The information has been prepared without considering your investment objectives, financial situation, or knowledge and experience. This material is not a research report and is not intended as such. FIS is not responsible for any trading decisions taken based on this communication. Trading swaps and over-the-counter derivatives, exchange-traded derivatives, and options involve substantial risk and are not suitable for all investors. You are advised to perform an independent investigation to determine whether a transaction is suitable for you. No part of this material may be copied or duplicated in any form by any means or redistributed without our prior written consent. Freight Investor Services Ltd (FIS) is authorised and regulated by the Financial Conduct Authority (FRN: 211452) and is a member of the National Futures Association ("NFA"). Freight Investor Services PTE Ltd ("FIS PTE") is a private limited company, incorporated and registered in Singapore with company number 200603922G, and has subsidiary offices in India and Shanghai. Freight Investor Solutions DMCC ("FIS DMCC") is a private limited company, incorporated and registered in Dubai with company number DMCC1225. Further information about FIS including the location of its offices can be found on our website at [www.freightinvestorservices.com](http://www.freightinvestorservices.com)