



# Supramax & Handysize FFA Daily Report

London +44 20 7090 1120 - info@freightinvestor.com | Singapore +65 6535 5189 - info@freightinvestor.asia  
 Shanghai +86 21 6335 4002 | Dubai +971 4 4493900

14 December 2022

### Supramax Commentary

Supras again were support with early trades on Jan at 12100. Mot of the interest in the deferred with cal23 ticking up and trading 13200 a couple of times. Despite ticking up there are willing sellers at these levels and the market seems less one sided than the bigger sizes.

### Handysize Commentary

Cal23 handy paid 12650 today which is +150 over yesterday. No other reported trades. Couple of improved bids via smx vs handy spreads. Have a good evening

### Supramax 10 Time Charter Average

Spot	12867	Chg	33
MTD	12755		
YTD	22439		

### Handysize 7 Time Charter Average

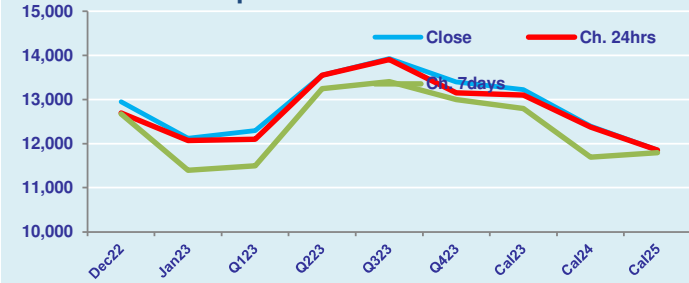
Spot	12933	Chg	-134
MTD	13187		
YTD	21597		

### Spread Ratio

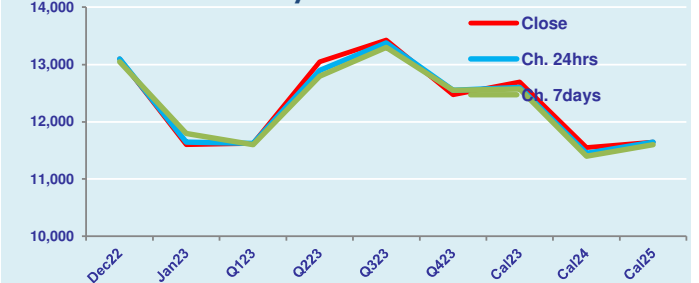
Spread	-66	Ratio	0.99
	-432		0.97
	841		1.04

	Per	Bid	Offer	Mid	Chg		Per	Bid	Offer	Mid	Chg	Spread	Ratio
Dec 22	Dec 22	12750	13150	12950	250	Dec 22	Dec 22	12900	13300	13100	0	-150	0.99
Jan 23	Jan 23	12000	12250	12125	50	Jan 23	Jan 23	11400	11800	11600	-50	525	1.05
Q1 23	Q1 23	12150	12450	12300	200	Q1 23	Q1 23	11400	11850	11625	0	675	1.06
Q2 23	Q2 23	13350	13750	13550	0	Q2 23	Q2 23	12850	13250	13050	150	500	1.04
Q3 23	Q3 23	13750	14100	13925	25	Q3 23	Q3 23	13350	13500	13425	50	500	1.04
Q4 23	Q4 23	13200	13600	13400	250	Q4 23	Q4 23	12350	12600	12475	-75	925	1.07
Cal 23	Cal 23	13200	13250	13225	125	Cal 23	Cal 23	12650	12750	12700	100	525	1.04
Cal 24	Cal 24	12300	12500	12400	25	Cal 24	Cal 24	11400	11700	11550	100	850	1.07
Cal 25	Cal 25	11650	12050	11850	0	Cal 25	Cal 25	11500	11800	11650	0	200	1.02

FIS Supramax Forward Curve



FIS Handy Forward Curve



Spot Price Source: Baltic

Disclaimer: The information provided in this communication is not intended for retail clients. It is general in nature only and does not constitute advice or an offer to sell, or the solicitation of an offer to purchase any swap or other financial instruments, nor constitute any recommendation on our part. The information has been prepared without considering your investment objectives, financial situation, or knowledge and experience. This material is not a research report and is not intended as such. FIS is not responsible for any trading decisions taken based on this communication. Trading swaps and over-the-counter derivatives, exchange-traded derivatives, and options involve substantial risk and are not suitable for all investors. You are advised to perform an independent investigation to determine whether a transaction is suitable for you. No part of this material may be copied or duplicated in any form by any means or redistributed without our prior written consent. Freight Investor Services Ltd (FIS) is authorised and regulated by the Financial Conduct Authority (FRN: 211452) and is a member of the National Futures Association ("NFA"). Freight Investor Services PTE Ltd ("FIS PTE") is a private limited company, incorporated and registered in Singapore with company number 200603922G, and has subsidiary offices in India and Shanghai. Freight Investor Solutions DMCC ("FIS DMCC") is a private limited company, incorporated and registered in Dubai with company number DMCC1225. Further information about FIS including the location of its offices can be found on our website at [www.freightinvestorservices.com](http://www.freightinvestorservices.com)