



# Supramax & Handysize FFA Daily Report

London +44 20 7090 1120 - info@freightinvestor.com | Singapore +65 6535 5189 - info@freightinvestor.asia  
 Shanghai +86 21 6335 4002 | Dubai +971 4 4493900

22 December 2022

### Supramax Commentary

Supramax paper rates drifted through the day, with the market thin and quiet and index coming down. Jan and Q1 traded to respective lows of \$11150 and \$11300. Losses extended into the backend of the curve, with Cal24 trading down to \$11950. We close supported at the day's lows. Have a nice evening.

### Handysize Commentary

A quiet day for Handysize paper, with rates softening slight. Jan and Feb were the only reported trades, printing 11250 and 11000 respectively.

### Supramax 10 Time Charter Average

Spot	11913	Chg	-220
MTD	12637		
YTD	22195		

### Handysize 7 Time Charter Average

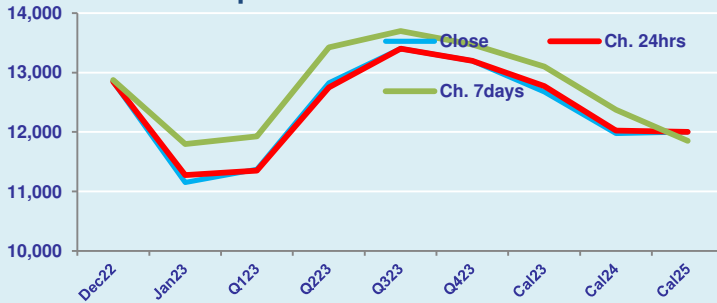
Spot	12075	Chg	-228
MTD	12927		
YTD	21375		

### Spread Ratio

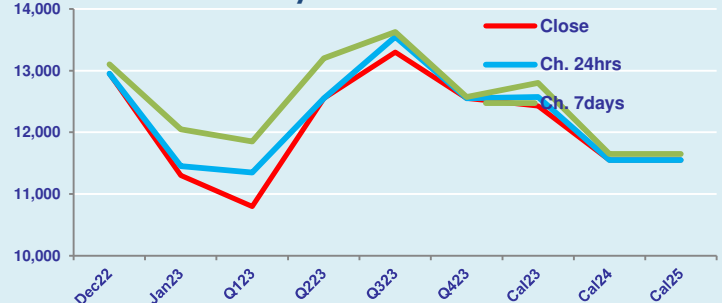
Spread	-162	Ratio	0.99
	-289		0.98
	820		1.04

Per	Bid	Offer	Mid	Chg	Per	Bid	Offer	Mid	Chg	Spread	Ratio
Dec 22	12700	13000	12850	0	Dec 22	12800	13100	12950	0	-100	0.99
Jan 23	11000	11300	11150	-125	Jan 23	11100	11500	11300	-150	-150	0.99
Q1 23	11250	11500	11375	25	Q1 23	10600	11000	10800	-550	575	1.05
Q2 23	12750	12900	12825	75	Q2 23	12350	12750	12550	0	275	1.02
Q3 23	13200	13600	13400	0	Q3 23	13100	13500	13300	-250	100	1.01
Q4 23	13000	13400	13200	0	Q4 23	12350	12750	12550	0	650	1.05
Cal 23	12550	12800	12675	-100	Cal 23	12300	12550	12425	-150	250	1.02
Cal 24	11900	12050	11975	-50	Cal 24	11400	11700	11550	0	425	1.04
Cal 25	11800	12200	12000	0	Cal 25	11400	11700	11550	0	450	1.04

FIS Supramax Forward Curve



FIS Handy Forward Curve



Spot Price Source: Baltic

**Disclaimer:** The information provided in this communication is not intended for retail clients. It is general in nature only and does not constitute advice or an offer to sell, or the solicitation of an offer to purchase any swap or other financial instruments, nor constitute any recommendation on our part. The information has been prepared without considering your investment objectives, financial situation, or knowledge and experience. This material is not a research report and is not intended as such. FIS is not responsible for any trading decisions taken based on this communication. Trading swaps and over-the-counter derivatives, exchange-traded derivatives, and options involve substantial risk and are not suitable for all investors. You are advised to perform an independent investigation to determine whether a transaction is suitable for you. No part of this material may be copied or duplicated in any form by any means or redistributed without our prior written consent. Freight Investor Services Ltd (FIS) is authorised and regulated by the Financial Conduct Authority (FRN: 211452) and is a member of the National Futures Association ("NFA"). Freight Investor Services PTE Ltd ("FIS PTE") is a private limited company, incorporated and registered in Singapore with company number 200603922G, and has subsidiary offices in India and Shanghai. Freight Investor Solutions DMCC ("FIS DMCC") is a private limited company, incorporated and registered in Dubai with company number DMCC1225. Further information about FIS including the location of its offices can be found on our website at [www.freightinvestorservices.com](http://www.freightinvestorservices.com)