



# Supramax & Handysize FFA Daily Report

London +44 20 7090 1120 - info@freightinvestor.com | Singapore +65 6535 5189 - info@freightinvestor.asia  
 Shanghai +86 21 6335 4002 | Dubai +971 4 4493900

05 January 2023

### Supramax Commentary

Supramax paper prompt rates came under pressure following the index, with Jan and Feb trading to respective lows of \$9500 and \$9750. Further out rates ticked up, with sharp pays coming from Panamax spread. Cal23 and Cal25 traded \$12250 and \$11900 respectively. We close supported across the curve. Have a nice evening.

### Handysize Commentary

Handysize paper rates ticked up on the prompt, with Feb printing \$10500.

### Supramax 10 Time Charter Average

Spot	9585	Chg	-452
MTD	10089		
YTD	10089		

### Handysize 7 Time Charter Average

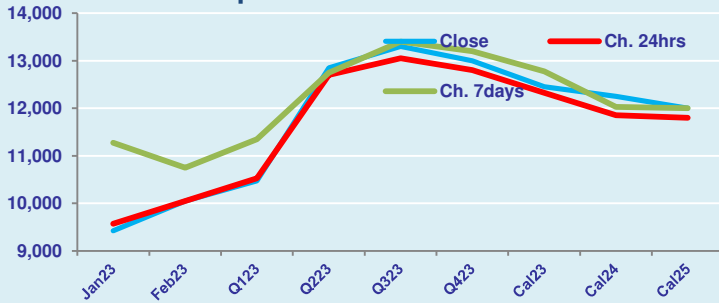
Spot	10286	Chg	-325
MTD	10649		
YTD	10649		

### Spread Ratio

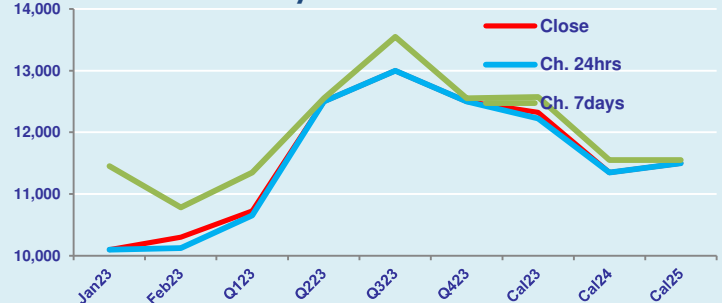
Spread	-701	Ratio	0.93
	-560		0.95
	-560		0.95

Per	Bid	Offer	Mid	Chg	Per	Bid	Offer	Mid	Chg	Spread	Ratio
Jan 23	9250	9600	9425	-150	Jan 23	9900	10300	10100	0	-675	0.93
Feb 23	9850	10250	10050	0	Feb 23	10100	10500	10300	175	-250	0.98
Q1 23	10350	10600	10475	-50	Q1 23	10600	10850	10725	75	-250	0.98
Q2 23	12700	13000	12850	150	Q2 23	12250	12750	12500	0	350	1.03
Q3 23	13100	13500	13300	250	Q3 23	12750	13250	13000	0	300	1.02
Q4 23	12800	13200	13000	200	Q4 23	12250	12750	12500	0	500	1.04
Cal 23	12350	12550	12450	125	Cal 23	12200	12450	12325	100	125	1.01
Cal 24	12100	12400	12250	400	Cal 24	11200	11500	11350	0	900	1.08
Cal 25	11750	12250	12000	200	Cal 25	11300	11700	11500	0	500	1.04

FIS Supramax Forward Curve



FIS Handy Forward Curve



Spot Price Source: Baltic

Disclaimer: The information provided in this communication is not intended for retail clients. It is general in nature only and does not constitute advice or an offer to sell, or the solicitation of an offer to purchase any swap or other financial instruments, nor constitute any recommendation on our part. The information has been prepared without considering your investment objectives, financial situation, or knowledge and experience. This material is not a research report and is not intended as such. FIS is not responsible for any trading decisions taken based on this communication. Trading swaps and over-the-counter derivatives, exchange-traded derivatives, and options involve substantial risk and are not suitable for all investors. You are advised to perform an independent investigation to determine whether a transaction is suitable for you. No part of this material may be copied or duplicated in any form by any means or redistributed without our prior written consent. Freight Investor Services Ltd (FIS) is authorised and regulated by the Financial Conduct Authority (FRN: 211452) and is a member of the National Futures Association ("NFA"). Freight Investor Services PTE Ltd ("FIS PTE") is a private limited company, incorporated and registered in Singapore with company number 200603922G, and has subsidiary offices in India and Shanghai. Freight Investor Solutions DMCC ("FIS DMCC") is a private limited company, incorporated and registered in Dubai with company number DMCC1225. Further information about FIS including the location of its offices can be found on our website at [www.freightinvestorservices.com](http://www.freightinvestorservices.com)