



# Supramax & Handysize FFA Daily Report

London +44 20 7090 1120 - info@freightinvestor.com | Singapore +65 6535 5189 - info@freightinvestor.asia  
 Shanghai +86 21 6335 4002 | Dubai +971 4 4493900

10 January 2023

### Supramax Commentary

Supramax paper rates came under pressure across the curve, following the larger sizes. Jan and Feb traded to respective lows of \$9000 and \$9500. Losses on the backend of the curve were more limited, with Cal24 printing \$12400. We close supported at the day's lows. Have a nice evening.

### Handysize Commentary

Handysize paper rates came under pressure, with Feb and Q2 slipping to respective lows of \$9500 and \$12400. We close offered at the day's lows.

### Supramax 10 Time Charter Average

Spot	8831	Chg	-242
MTD	9568		
YTD	9568		

### Handysize 7 Time Charter Average

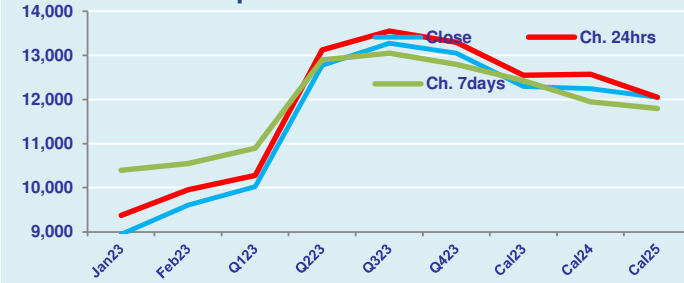
Spot	9610	Chg	-138
MTD	10206		
YTD	10206		

### Spread Ratio

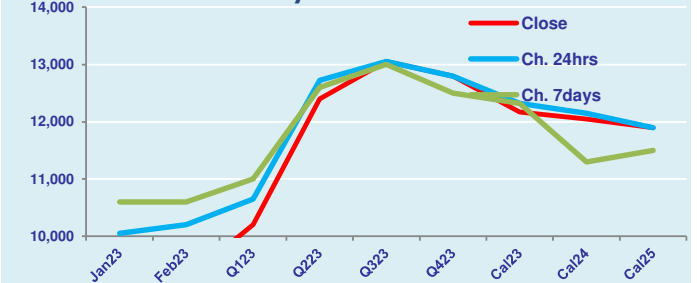
Spot	-779	0.92
MTD	-639	0.94
YTD	-639	0.94

Per	Bid	Offer	Mid	Chg	Per	Bid	Offer	Mid	Chg	Spread	Ratio
Jan 23	8800	9100	8950	-425	Jan 23	9250	9750	9500	-550	-550	0.94
Feb 23	9400	9800	9600	-350	Feb 23	9000	9500	9250	-950	350	1.04
Q1 23	9900	10150	10025	-250	Q1 23	10000	10400	10200	-450	-175	0.98
Q2 23	12650	12900	12775	-350	Q2 23	12200	12600	12400	-325	375	1.03
Q3 23	13100	13450	13275	-275	Q3 23	12850	13250	13050	0	225	1.02
Q4 23	12850	13250	13050	-250	Q4 23	12600	13000	12800	0	250	1.02
Cal 23	12200	12400	12300	-250	Cal 23	12050	12300	12175	-150	125	1.01
Cal 24	12100	12400	12250	-325	Cal 24	11900	12200	12050	-100	200	1.02
Cal 25	11850	12250	12050	0	Cal 25	11700	12100	11900	0	150	1.01

FIS Supramax Forward Curve



FIS Handy Forward Curve



Spot Price Source: Baltic

Disclaimer: The information provided in this communication is not intended for retail clients. It is general in nature only and does not constitute advice or an offer to sell, or the solicitation of an offer to purchase any swap or other financial instruments, nor constitute any recommendation on our part. The information has been prepared without considering your investment objectives, financial situation, or knowledge and experience. This material is not a research report and is not intended as such. FIS is not responsible for any trading decisions taken based on this communication. Trading swaps and over-the-counter derivatives, exchange-traded derivatives, and options involve substantial risk and are not suitable for all investors. You are advised to perform an independent investigation to determine whether a transaction is suitable for you. No part of this material may be copied or duplicated in any form by any means or redistributed without our prior written consent. Freight Investor Services Ltd (FIS) is authorised and regulated by the Financial Conduct Authority (FRN: 211452) and is a member of the National Futures Association ("NFA"). Freight Investor Services PTE Ltd ('FIS PTE') is a private limited company, incorporated and registered in Singapore with company number 200603922G, and has subsidiary offices in India and Shanghai. Freight Investor Solutions DMCC ('FIS DMCC') is a private limited company, incorporated and registered in Dubai with company number DMCC1225. Further information about FIS including the location of its offices can be found on our website at [www.freightinvestorservices.com](http://www.freightinvestorservices.com)