



# Supramax & Handysize FFA Daily Report

London +44 20 7090 1120 - info@freightinvestor.com | Singapore +65 6535 5189 - info@freightinvestor.asia  
 Shanghai +86 21 6335 4002 | Dubai +971 4 4493900

24 March 2023

### Supramax Commentary

An active end to the week for Supramax paper, with prompt rates softening \$250. The backend of the curve remains rangebound, with Q4 trading \$15500 in size. We close supported under the lows. Have a nice weekend.

### Handysize Commentary

A quiet end to the week for Handysize paper.

### Supramax 10 Time Charter Average

Spot	14657	Chg	-11
MTD	13760		
YTD	9847		

### Handysize 7 Time Charter Average

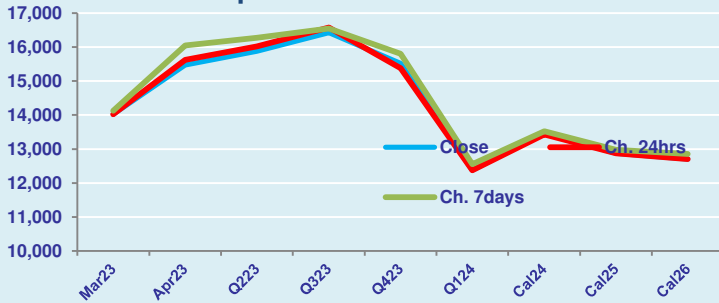
Spot	12652	Chg	-11
MTD	11666		
YTD	9464		

### Spread Ratio

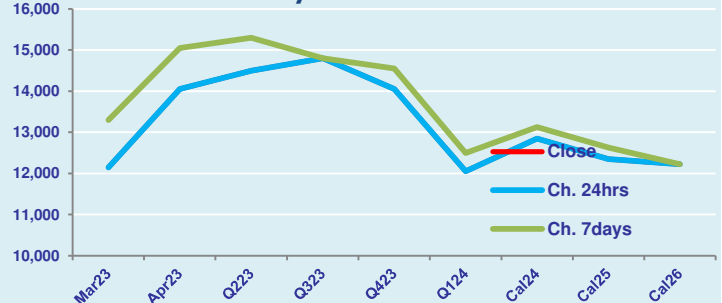
2005	1.16
2095	1.18
383	1.04

Per	Bid	Offer	Mid	Chg	Per	Bid	Offer	Mid	Chg	Spread	Ratio
Mar 23	13900	14150	14025	0	Mar 23	12000	12300	12150	0	1875	1.15
Apr 23	15350	15600	15475	-150	Apr 23	13850	14250	14050	0	1425	1.10
Q2 23	15750	16000	15875	-150	Q2 23	14350	14650	14500	0	1375	1.09
Q3 23	16300	16550	16425	-150	Q3 23	14600	15000	14800	0	1625	1.11
Q4 23	15400	15650	15525	150	Q4 23	13850	14250	14050	0	1475	1.10
Q1 24	12250	12500	12375	0	Q1 24	11850	12250	12050	0	325	1.03
Cal 24	13400	13550	13475	50	Cal 24	12700	13000	12850	0	625	1.05
Cal 25	12750	13000	12875	0	Cal 25	12200	12500	12350	0	525	1.04
Cal 26	12500	12900	12700	0	Cal 26	12100	12350	12225	0	475	1.04

FIS Supramax Forward Curve



FIS Handy Forward Curve



Spot Price Source: Baltic

**Disclaimer:** The information provided in this communication is not intended for retail clients. It is general in nature only and does not constitute advice or an offer to sell, or the solicitation of an offer to purchase any swap or other financial instruments, nor constitute any recommendation on our part. The information has been prepared without considering your investment objectives, financial situation, or knowledge and experience. This material is not a research report and is not intended as such. FIS is not responsible for any trading decisions taken based on this communication. Trading swaps and over-the-counter derivatives, exchange-traded derivatives, and options involve substantial risk and are not suitable for all investors. You are advised to perform an independent investigation to determine whether a transaction is suitable for you. No part of this material may be copied or duplicated in any form by any means or redistributed without our prior written consent. Freight Investor Services Ltd (FIS) is authorised and regulated by the Financial Conduct Authority (FRN: 211452) and is a member of the National Futures Association ("NFA"). Freight Investor Services PTE Ltd ("FIS PTE") is a private limited company, incorporated and registered in Singapore with company number 200603922G, and has subsidiary offices in India and Shanghai. Freight Investor Solutions DMCC ("FIS DMCC") is a private limited company, incorporated and registered in Dubai with company number DMCC1225. Further information about FIS including the location of its offices can be found on our website at [www.freightinvestorservices.com](http://www.freightinvestorservices.com)