



London Iron Ore Market Report

London +44 (0) 20 7090 1120 - info@freightinvestor.com | Singapore +65 6535 5189 - info@freightinvestor.asia

16 January 2024

After a volatile inter DCE session trading window, the London afternoon saw minimal activity with iron ore closing at \$128.80, over three dollars higher from the lowest point in the day. Very little interest was expressed towards spreads with trading concentrating on the quarters in particular Q1 and Q2. There was also some Sep outright interest adding liquidity a little bit further out the curve. Traders now await official China Q4 GDP data tomorrow.

INDEX	Price	Change	MTD
Platts IO 62%	\$129.45	\$0.50	\$137.17

INDEX	Price	Change	MTD
MB IO 65%	\$142.12	\$1.25	\$148.24

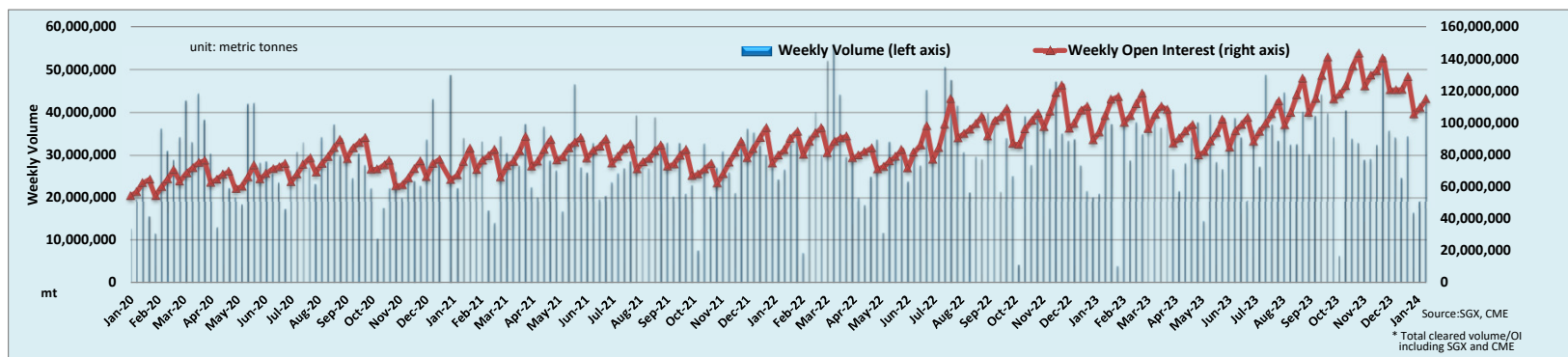
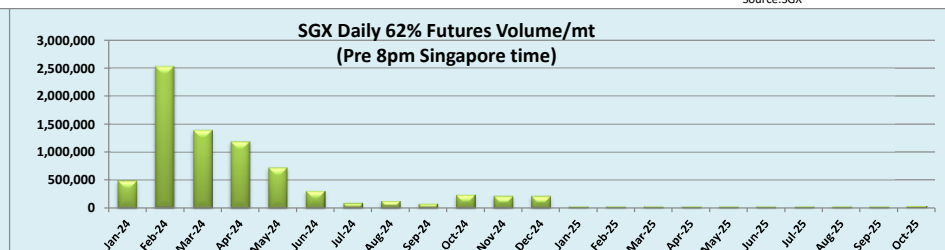
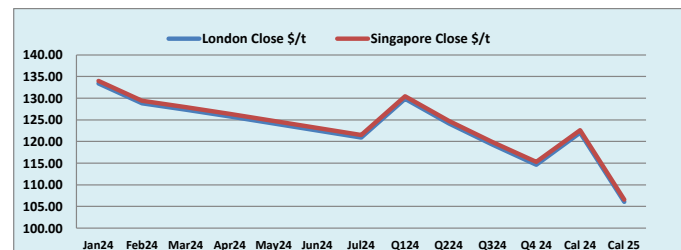
INDEX	Price	Change	MTD
Platts Lump Prem	\$0.1750	-\$0.0050	\$0.1940

Iron Ore 62% Futures	Jan 24	Feb 24	Mar 24	Apr 24	May 24	Jun 24	Jul 24	Q1 24	Q2 24	Q3 24	Q4 24	Cal 24	Cal 25
London Close \$/t	133.40	128.80	127.30	125.75	124.15	122.55	120.90	129.85	124.15	119.30	114.65	122.00	106.05
Singapore Close \$/t	134.00	129.40	127.90	126.35	124.75	123.15	121.50	130.45	124.75	119.90	115.25	122.60	106.60
Change	-0.45%	+5.00%	-0.47%	-0.47%	-0.48%	-0.49%	-0.49%	-0.46%	-0.48%	-0.50%	-0.52%	-0.49%	-0.52%

IO 62% Spreads	Jan/ Feb	Feb/ Mar	Mar/ Apr	Apr/ May	May/ Jun	Jun/ Jul	Q1/ Q2	Q2/ Q3	Q3/ Q4 24	Cal 24/Cal 25
London Close \$/t	4.60	1.50	1.55	1.60	1.60	1.65	5.70	4.85	4.65	15.95
Singapore Close \$/t	4.60	1.50	1.55	1.60	1.60	1.65	5.70	4.85	4.65	16.00
Change	0.00	0.00	0.00	0.00	0.00	0.00	0.00	0.00	0.00	-0.05

T Session	SGX Volume /mt
Futures 62%	8,037,100
Options	2,542,000
Total	10,579,100

Source:SGX



Source:SGX, CME

* Total cleared volume/OI including SGX and CME

Disclaimer: The information provided in this communication is not intended for retail clients. It is general in nature only and does not constitute advice or an offer to sell, or the solicitation of an offer to purchase any swap or other financial instruments, nor constitute any recommendation on our part. The information has been prepared without considering your investment objectives, financial situation, or knowledge and experience. This material is not a research report and is not intended as such. FIS is not responsible for any trading decisions taken based on this communication. Trading swaps and over-the-counter derivatives, exchange-traded derivatives, and options involve substantial risk and are not suitable for all investors. You are advised to perform an independent investigation to determine whether a transaction is suitable for you. No part of this material may be copied or duplicated in any form by any means or redistributed without our prior written consent. Freight Investor Services Ltd (FIS) is authorised and regulated by the Financial Conduct Authority (FRN: 211452) and is a member of the National Futures Association ("NFA"). Freight Investor Services PTE Ltd ("FIS PTE") is a private limited company, incorporated and registered in Singapore with company number 200603922G, and has subsidiary offices in India and Shanghai. Freight Investor Solutions DMCC ("FIS DMCC") is a private limited company, incorporated and registered in Dubai with company number DMCC1225. Further information about FIS including the location of its offices can be found on our website at www.freightinvestorservices.com