



# Supramax & Handysize FFA Daily Report

London +44 20 7090 1120 - info@freightinvestor.com | Singapore +65 6535 5189 - info@freightinvestor.asia  
 Shanghai +86 21 6335 4002 | Dubai +971 4 4493900

22 March 2024

### Supramax Commentary

Friday was not the busiest day for Supramax paper. Focus remained on the prompts and an overall bearish tone dominated the market with weight on offer side. April traded down to \$15,100, \$600 lower than where it closed yesterday, while Q2 traded down to \$15,200. No trades were reported on the Cals. Let's see what next week brings. Have a nice weekend.

### Handysize Commentary

A quiet end to an overall active week for Handysize paper. May printed \$15,000 and the forward curve closed flat. Have a good weekend.

### Supramax 10 Time Charter Average

Spot	15212	Chg	45
MTD	14558		
YTD	12824		

### Handysize 7 Time Charter Average

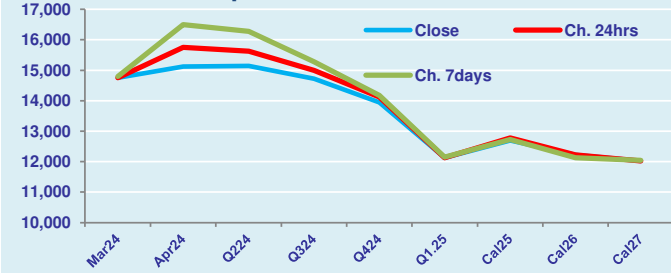
Spot	14309	Chg	7
MTD	13842		
YTD	11857		

### Spread Ratio

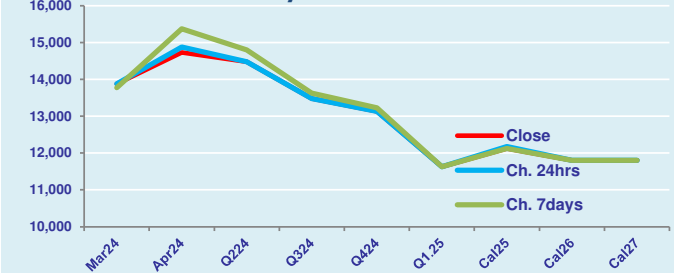
Spread	903	Ratio	1.06
	716		1.05
	967		1.08

Per	Bid	Offer	Mid	Chg	Per	Bid	Offer	Mid	Chg	Spread	Ratio
Mar 24	14500	15000	14750	0	Mar 24	13750	14000	13875	0	875	1.06
Apr 24	15000	15250	15125	-625	Apr 24	14600	14850	14725	-150	400	1.03
Q2 24	15050	15250	15150	-475	Q2 24	14350	14600	14475	0	675	1.05
Q3 24	14600	14850	14725	-275	Q3 24	13350	13600	13475	0	1250	1.09
Q4 24	13800	14100	13950	-175	Q4 24	13000	13250	13125	0	825	1.06
Q1. 25	12000	12250	12125	0	Q1. 25	11500	11750	11625	0	500	1.04
Cal 25	12600	12800	12700	-75	Cal 25	12000	12250	12125	-50	575	1.05
Cal 26	12100	12350	12225	0	Cal 26	11600	12000	11800	0	425	1.04
Cal 27	11900	12150	12025	0	Cal 27	11600	12000	11800	0	225	1.02

FIS Supramax Forward Curve



FIS Handy Forward Curve



Spot Price Source: Baltic

Disclaimer: The information provided in this communication is not intended for retail clients. It is general in nature only and does not constitute advice or an offer to sell, or the solicitation of an offer to purchase any swap or other financial instruments, nor constitute any recommendation on our part. The information has been prepared without considering your investment objectives, financial situation, or knowledge and experience. This material is not a research report and is not intended as such. FIS is not responsible for any trading decisions taken based on this communication. Trading swaps and over-the-counter derivatives, exchange-traded derivatives, and options involve substantial risk and are not suitable for all investors. You are advised to perform an independent investigation to determine whether a transaction is suitable for you. No part of this material may be copied or duplicated in any form by any means or redistributed without our prior written consent. Freight Investor Services Ltd (FIS) is authorised and regulated by the Financial Conduct Authority (FRN: 211452) and is a member of the National Futures Association ("NFA"). Freight Investor Services PTE Ltd ('FIS PTE') is a private limited company, incorporated and registered in Singapore with company number 200603922G, and has subsidiary offices in India and Shanghai. Freight Investor Solutions DMCC ('FIS DMCC') is a private limited company, incorporated and registered in Dubai with company number DMCC1225. Further information about FIS including the location of its offices can be found on our website at [www.freightinvestorservices.com](http://www.freightinvestorservices.com)