



Fuel Oil Daily Evening Report

London +44 20 7090 1134 - info@freightinvestor.com | Singapore +65 6535 5189 - info@freightinvestor.asia | Shanghai +86 21 63012568

27 June 2024

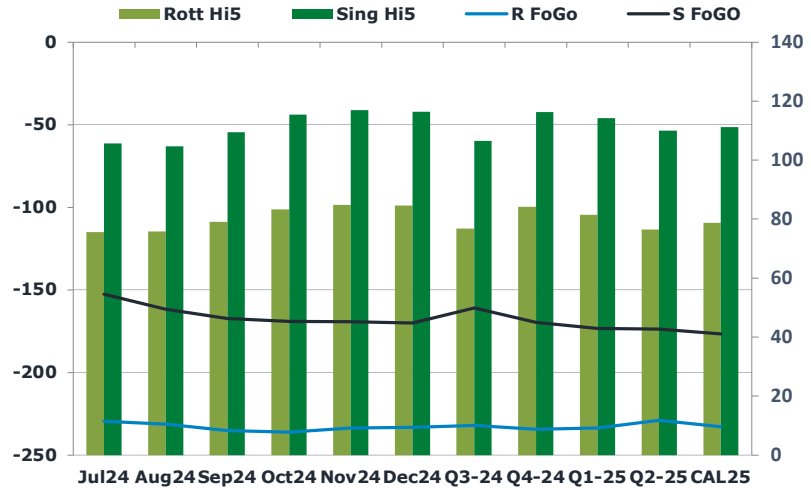
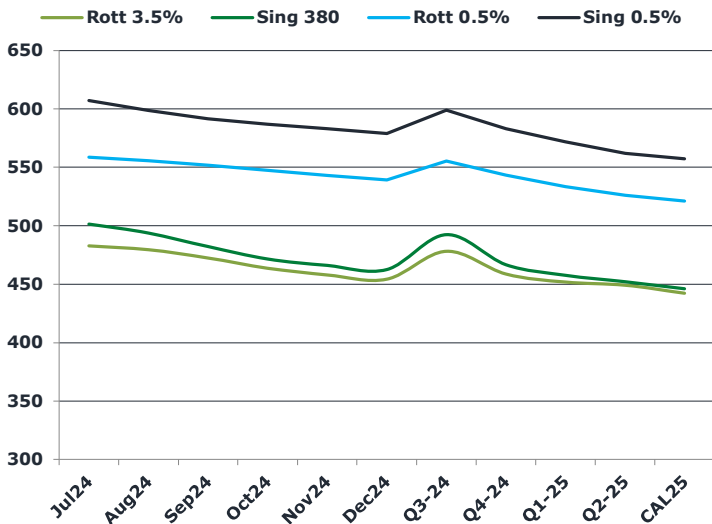
Oil and Energy Market News

Crude benchmarks are holding onto gains today, with Aug24 Brent futures up 1% here on Middle East tensions and US economic data. That being said, markets remain in a narrow range, held in check this week by sluggish EIA data during the summer driving season.

Brent

85.79

	Barges 3.5 %	Sing 380cst	Rott 0.5%	Sing 0.5%	Sing Hi5
Jul24	482.75	501.50	558.30	607.20	106
Aug24	479.50	493.75	555.30	598.45	105
Sep24	472.50	482.25	551.55	591.70	109
Oct24	463.75	471.50	547.05	586.95	115
Nov24	458.00	466.00	542.80	582.95	117
Dec24	454.25	462.50	538.80	578.95	116
Q3-24	478.25	492.50	555.00	599.00	107
Q4-24	458.75	466.75	543.00	583.00	116
Q1-25	451.75	457.50	533.25	571.75	114
Q2-25	449.25	452.00	525.75	562.00	110
CAL25	442.25	446.00	521.00	557.25	111



Fuel Oil Market News

VLSFO cracks are pretty flat on the day in the front, marking \$3.20/bbl and \$10.80/bbl in the rott and Sing, respectively.

Jul24/Aug24 VLSFO Sing spread is 50 cents higher on the day, whilst the Sing 380cst equivalent softened.

	Rott GOFO	Sing GOFO	R FoGo	S FoGO	Rott Hi5
Jul24	305.04	258.29	-229.50	-152.50	76
Aug24	307.05	266.42	-231.25	-161.75	76
Sep24	313.96	276.80	-235.00	-167.25	79
Oct24	319.42	284.57	-236.00	-169.00	83
Nov24	318.26	286.19	-233.50	-169.25	85
Dec24	317.79	286.34	-233.25	-170.00	85
Q3-24	308.75	267.40	-232.00	-161.00	77
Q4-24	318.50	285.70	-234.25	-169.50	84
Q1-25	315.00	287.50	-233.50	-173.25	82
Q2-25	305.50	283.69	-229.00	-173.75	77
CAL25	311.50	287.83	-232.75	-176.50	79

FIS Fuel Oil Daily Evening Report

London +44 20 7090 1134 - info@freightinvestor.com | Singapore +65 6535 5189 - info@freightinvestor.asia | Shanghai +86 21 63012568

27 June 2024

TIME SPREADS FUEL

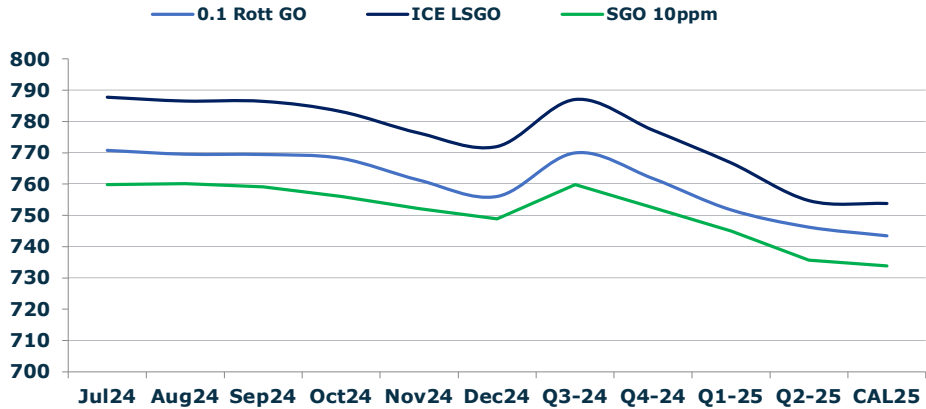
	Barges 3.5	S 380	Rott 0.5%	Sing 0.5%
Jul24/Aug24	3.25	7.75	3.00	8.75
Aug24/Sep24	7.00	11.50	3.75	6.75
Sep24/Oct24	8.75	10.75	4.50	4.75
Oct24/Nov24	5.75	5.50	4.25	4.00
Nov24/Dec24	3.75	3.50	4.00	4.00
Q3-24/Q4-24	19.50	25.75	12.00	16.00
Q4-24/Q1-25	7.00	9.25	9.75	11.25
Q1-25/Q2-25	2.50	5.50	7.50	9.75
CAL25/CAL26	20.50	21.00	23.3	27.25

GASOIL CURVES

	Rott 0.1	SGO 10ppm	ICE GO
Jul24	770.8	759.8	787.8
Aug24	769.5	760.2	786.5
Sep24	769.5	759.0	786.5
Oct24	768.2	756.1	783.2
Nov24	761.3	752.2	776.3
Dec24	756.0	748.8	772.0
Q3-24	770.0	759.9	787.0
Q4-24	761.8	752.5	777.3
Q1-25	751.8	745.0	766.8
Q2-25	746.3	735.7	754.8
CAL25	743.5	733.8	753.8

EW SPREAD

	EW380	EW0.5%
Jul24	18.75	48.90
Aug24	14.25	43.15
Sep24	9.75	40.15
Oct24	7.75	39.90
Nov24	8.00	40.15
Dec24	8.25	40.15
Q3-24	14.25	44.00
Q4-24	8.00	40.00
Q1-25	5.75	38.50
Q2-25	2.75	36.25
CAL25	5.00	36.25



Contact US:

Luke Longhurst
 Email: lukel@freightinvestor.com
 Mobile: (+44) 7966 968761

Ricky Forman
 Email: rickyf@freightinvestor.com
 Mobile: (+44) 7868 708719

Sam Twyford
 Email: samt@freightinvestor.com
 Mobile: (+44) 7729 118643

Archie Smith
 Email: archies@freightinvestor.com
 Mobile: (+44) 7355 020663

Jessie Deng
 Email: jessied@freightinvestor.com
 Mobile: (+86) 13524516743

Jarryd Smith
 Email: jarryds@freightinvestor.com
 Mobile: (+65) 8798 4987

Min Bao
 Email: minb@freightinvestor.com
 Mobile: (+65) 9785 4627

The information provided in this communication is not intended for retail clients. It is general in nature only and does not constitute advice or an offer to sell, or the solicitation of an offer to purchase any swap or other financial instruments, nor constitute any recommendation on our part. The information has been prepared without considering your investment objectives, financial situation, or knowledge and experience. This material is not a research report and is not intended as such. FIS is not responsible for any trading decisions taken based on this communication. Trading swaps and over-the-counter derivatives, exchange-traded derivatives, and options involve substantial risk and are not suitable for all investors. You are advised to perform an independent investigation to determine whether a transaction is suitable for you. No part of this material may be copied or duplicated in any form by any means or redistributed without our prior written consent. Freight Investor Services Ltd (FIS) is authorised and regulated by the Financial Conduct Authority (FRN: 211452) and is a member of the National Futures Association ("NFA"). Freight Investor Services PTE Ltd ('FIS PTE') is a private limited company, incorporated and registered in Singapore with company number 200603922G, and has subsidiary offices in India and Shanghai. Freight Investor Solutions DMCC ('FIS DMCC') is a private limited company, incorporated and registered in Dubai with company number DMCC1225. Further information about FIS including the location of its offices can be found on our website at freightinvestorservices.com