



# Fuel Oil Daily Morning Report

London +44 20 7090 1134 - info@freightinvestor.com | Singapore +65 6535 5189 - info@freightinvestor.asia | Shanghai +86 21 63012568

12 July 2024

## Oil and Energy Market News

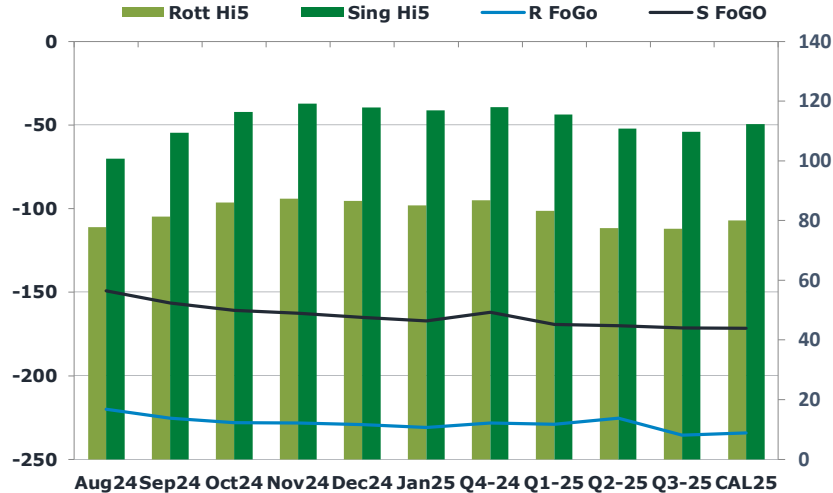
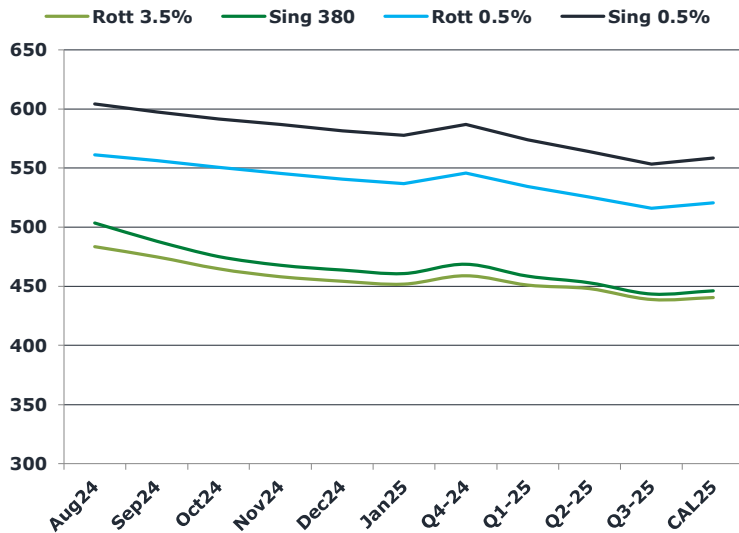
Brent for September settlement added 0.2% to \$85.59 a barrel on the ICE Futures Europe Exchange at 5:23 a.m. in London. WTI for August delivery was 0.4% higher at \$82.91 a barrel on the New York Mercantile Exchange.

China's oil imports were little changed in June amid seasonal maintenance at refineries and lackluster downstream demand, while the state reserves sought new supplies. In futures, oil climbed for a third day on signs of stronger demand, and signals the Federal Reserve is getting close to its much-anticipated pivot.

## Brent

**86.09**

	Barges 3.5 %	Sing 380cst	Rott 0.5%	Sing 0.5%	Sing Hi5
Aug24	483.45	503.45	561.25	604.10	101
Sep24	474.95	488.20	556.25	597.60	109
Oct24	464.70	475.20	550.75	591.60	116
Nov24	458.20	467.70	545.50	586.85	119
Dec24	454.20	463.70	540.75	581.60	118
Jan25	451.95	460.70	537.00	577.60	117
Q4-24	459.00	468.75	545.75	586.75	118
Q1-25	451.00	458.50	534.25	574.00	116
Q2-25	448.00	453.00	525.50	563.75	111
Q3-25	438.75	443.50	516.00	553.25	110
CAL25	440.50	446.25	520.50	558.50	112



## Fuel Oil Market News

Fridays trading session started very quiet in Asia with no HS/LS spreads trading and the crks unch from Thursdays close.

	Rott GOFO	Sing GOFO	R FoGo	S FoGo	Rott Hi5
Aug24	297.89	249.89	-220.00	-149.25	78
Sep24	306.59	265.88	-225.25	-156.50	81
Oct24	314.03	277.39	-228.00	-161.00	86
Nov24	315.46	281.84	-228.25	-162.75	87
Dec24	315.78	282.78	-229.25	-165.00	87
Jan25	316.01	284.14	-231.00	-167.25	85
Q4-24	315.00	279.98	-228.25	-162.00	87
Q1-25	312.25	284.64	-229.00	-169.25	83
Q2-25	303.00	280.83	-225.50	-170.00	78
Q3-25	312.75	281.01	-235.50	-171.25	77
CAL25	314.25	283.85	-234.25	-171.50	80
CAL 26	329.00	277.78	0.00	-172.75	75

# FIS Fuel Oil Daily Morning Report

London +44 20 7090 1134 - info@freightinvestor.com | Singapore +65 6535 5189 - info@freightinvestor.asia | Shanghai +86 21 63012568

## 12 July 2024

### TIME SPREADS FUEL

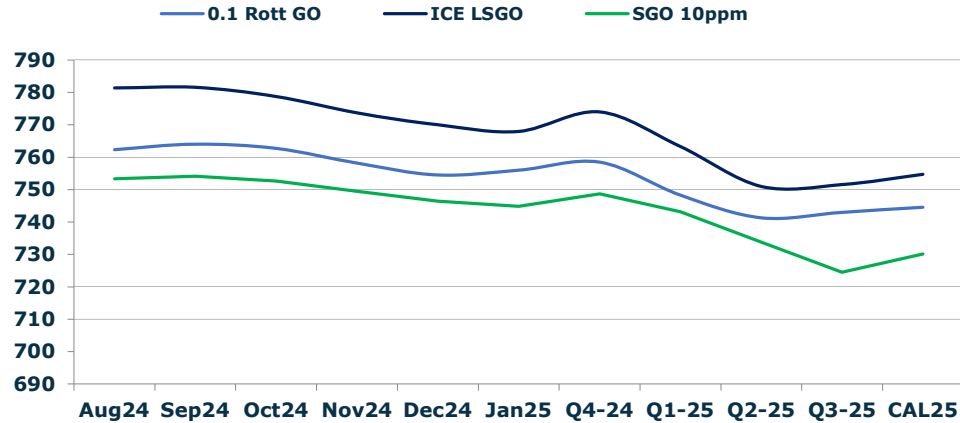
	Barges 3.5	S 380	Rott 0.5%	Sing 0.5%
Aug24/Sep24	8.50	15.25	5.00	6.50
Sep24/Oct24	10.25	13.00	5.50	6.00
Oct24/Nov24	6.50	7.50	5.25	4.75
Nov24/Dec24	4.00	4.00	4.75	5.25
Dec24/Jan25	2.25	3.00	3.75	4.00
Q4-24/Q1-25	8.00	10.25	11.50	12.75
Q1-25/Q2-25	3.00	5.50	8.75	10.25
Q2-25/Q3-25	9.25	9.50	9.50	10.50
CAL25/CAL26	21.50	20.00	26.8	27.25

### GASOIL CURVES

	Rott 0.1	SGO 10ppm	ICE GO
Aug24	762.3	753.3	781.3
Sep24	764.0	754.1	781.5
Oct24	762.7	752.6	778.7
Nov24	758.2	749.5	773.7
Dec24	754.5	746.5	770.0
Jan25	756.0	744.8	768.0
Q4-24	758.5	748.7	774.0
Q1-25	748.3	743.1	763.3
Q2-25	741.3	733.8	751.0
Q3-25	743.0	724.5	751.5
CAL25	744.5	730.1	754.8

### EW SPREAD

	EW380	EW0.5%
Aug24	20.00	42.85
Sep24	13.25	41.35
Oct24	10.50	40.85
Nov24	9.50	41.35
Dec24	9.50	40.85
Jan25	8.75	40.60
Q4-24	9.75	41.00
Q1-25	7.50	39.75
Q2-25	5.00	38.25
Q3-25	4.75	37.25
CAL25	5.50	38.00



### Contact US:

**Luke Longhurst**  
 Email: lukel@freightinvestor.com  
 Mobile: (+44) 7966 968761

**Ricky Forman**  
 Email: rickyf@freightinvestor.com  
 Mobile: (+44) 7868 708719

**Sam Twyford**  
 Email: samt@freightinvestor.com  
 Mobile: (+44) 7729 118643

**Archie Smith**  
 Email: archies@freightinvestor.com  
 Mobile: (+44) 7355 020663

**Jessie Deng**  
 Email: jessied@freightinvestor.com  
 Mobile: (+86) 13524516743

**Jarryd Smith**  
 Email: jarryds@freightinvestor.com  
 Mobile: (+65) 8798 4987

**Min Bao**  
 Email: minb@freightinvestor.com  
 Mobile: (+65) 9785 4627

The information provided in this communication is not intended for retail clients. It is general in nature only and does not constitute advice or an offer to sell, or the solicitation of an offer to purchase any swap or other financial instruments, nor constitute any recommendation on our part. The information has been prepared without considering your investment objectives, financial situation, or knowledge and experience. This material is not a research report and is not intended as such. FIS is not responsible for any trading decisions taken based on this communication. Trading swaps and over-the-counter derivatives, exchange-traded derivatives, and options involve substantial risk and are not suitable for all investors. You are advised to perform an independent investigation to determine whether a transaction is suitable for you. No part of this material may be copied or duplicated in any form by any means or redistributed without our prior written consent. Freight Investor Services Ltd (FIS) is authorised and regulated by the Financial Conduct Authority (FRN: 211452) and is a member of the National Futures Association ("NFA"). Freight Investor Services PTE Ltd ('FIS PTE') is a private limited company, incorporated and registered in Singapore with company number 200603922G, and has subsidiary offices in India and Shanghai. Freight Investor Solutions DMCC ('FIS DMCC') is a private limited company, incorporated and registered in Dubai with company number DMCC1225. Further information about FIS including the location of its offices can be found on our website at freightinvestorservices.com