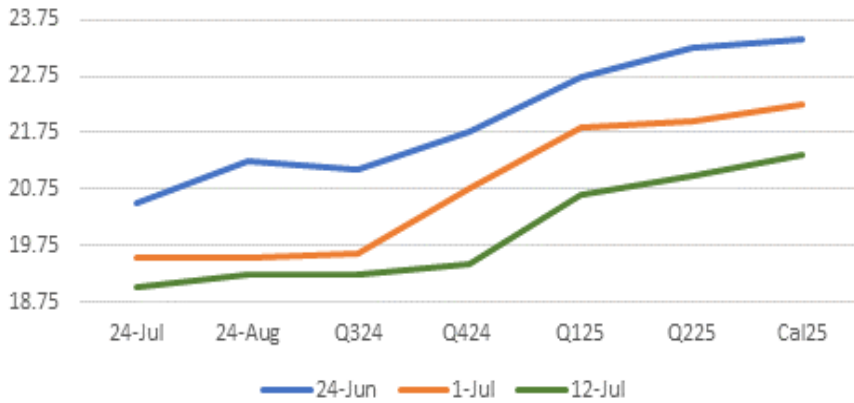


12/07/2024

AUP Curve



| FIS AUP Curve | | | |
|---------------|-------|-------|----------|
| Period | Bid | Offer | Midpoint |
| 24-Jul | 18.75 | 19.25 | 19.00 |
| 24-Aug | 19.00 | 19.50 | 19.25 |
| Q324 | 19.00 | 19.50 | 19.25 |
| Q424 | 19.17 | 19.67 | 19.42 |
| 2H24 | 19.08 | 19.58 | 19.33 |
| Q125 | 20.42 | 20.92 | 20.67 |
| Q225 | 20.75 | 21.25 | 21.00 |
| 1H25 | 20.58 | 21.08 | 20.83 |
| Cal25 | 21.10 | 21.60 | 21.35 |

Commentary:

There was average trading today on the CME. In total, 7,000 tons of aluminum premium traded across the block. All of this activity was done in EDP, no AUP or AEP traded. For EDP, multiple strips of Oct-Nov24 traded at 310; Aug-Sep24 and Aug-Oct24 traded at 325 and 315 respectively. And an outright Aug24 traded at 330.

Platts "Heards":

No "Heards" as of release of this report.

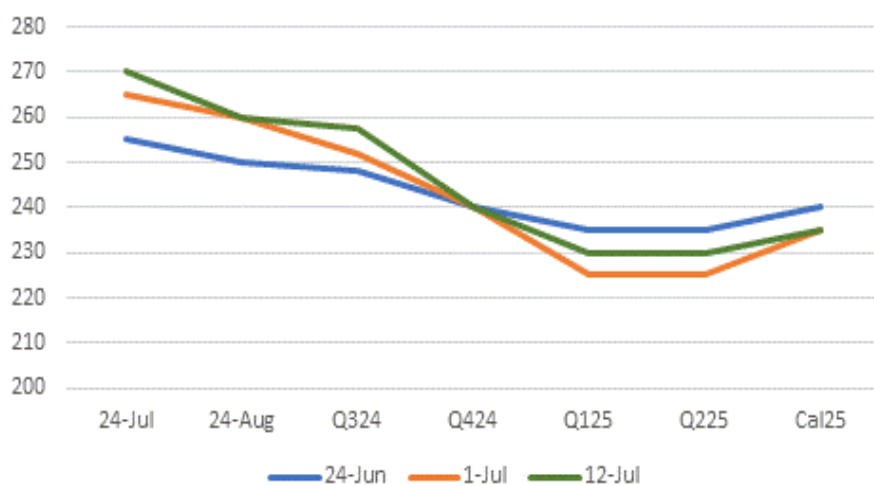
News:

Century Aluminum's Jamalco bauxite and alumina plant in Jamaica has returned to full production following minor damage from Hurricane Beryl. Company does not expect the storm damage to have any material impact on production or financial results.

A freight train carrying alumina owned by Russian aluminum giant United Co. Rusal was derailed on Thursday in Guinea's capital Conakry. There were no casualties in the incident, and repair works are underway. Rusal shipped 266,429 tons of alumina last year, a 16% drop from the year earlier.

(Source: Bloomberg)

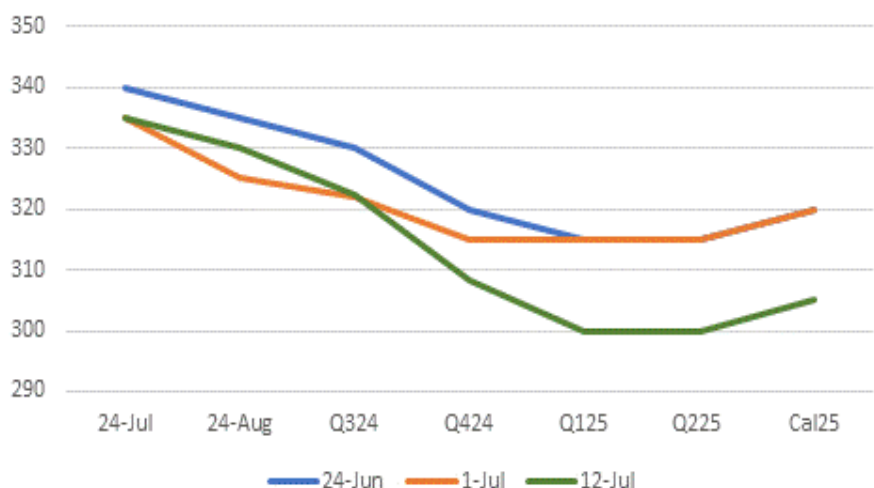
AEP Curve



FIS AEP Curve

| Period | Bid | Offer | Midpoint |
|--------|-----|-------|----------|
| 24-Jul | 255 | 285 | 270 |
| 24-Aug | 245 | 275 | 260 |
| Q324 | 243 | 273 | 258 |
| Q424 | 225 | 255 | 240 |
| 2H24 | 234 | 264 | 249 |
| Q125 | 215 | 245 | 230 |
| Q225 | 215 | 245 | 230 |
| 1H25 | 215 | 245 | 230 |
| Cal25 | 220 | 250 | 235 |

EDP Curve



FIS EDP Curve

| Period | Bid | Offer | Midpoint |
|--------|-----|-------|----------|
| 24-Jul | 320 | 3350 | 335 |
| 24-Aug | 315 | 345 | 330 |
| Q324 | 308 | 338 | 323 |
| Q424 | 293 | 323 | 308 |
| 2H24 | 300 | 330 | 315 |
| Q125 | 285 | 315 | 300 |
| Q225 | 285 | 315 | 300 |
| 1H25 | 285 | 315 | 300 |
| Cal25 | 290 | 320 | 305 |

Written by

Hull Collins

+12035178148

HullC@freightinvestor.com

The information provided in this communication is not intended for retail clients. It is general in nature only and does not constitute advice or an offer to sell, or the solicitation of an offer to purchase any swap or other financial instruments, nor constitute any recommendation on our part. The information has been prepared without considering your investment objectives, financial situation, or knowledge and experience. This material is not a research report and is not intended as such. FIS is not responsible for any trading decisions taken based on this communication. Trading swaps and over-the-counter derivatives, exchange-traded derivatives, and options involve substantial risk and are not suitable for all investors. You are advised to perform an independent investigation to determine whether a transaction is suitable for you. No part of this material may be copied or duplicated in any form by any means or redistributed without our prior written consent. Freight Investor Services Ltd (FIS) is authorised and regulated by the Financial Conduct Authority (FRN: 211452) and is a member of the National Futures Association ("NFA"). Freight Investor Services PTE Ltd ('FIS PTE') is a private limited company, incorporated and registered in Singapore with company number 200603922G, and has subsidiary offices in India and Shanghai. Freight Investor Solutions DMCC ('FIS DMCC') is a private limited company, incorporated and registered in Dubai with company number DMCC1225. Further information about FIS including the location of its offices can be found on our website at freightinvestorservices.com