



Fuel Oil Daily Evening Report

London +44 20 7090 1134 - info@freightinvestor.com | Singapore +65 6535 5189 - info@freightinvestor.asia | Shanghai +86 21 63012568

19 August 2024

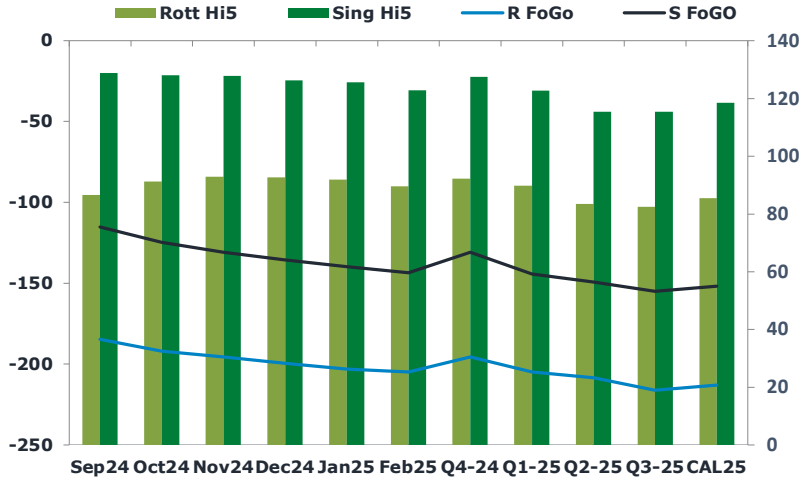
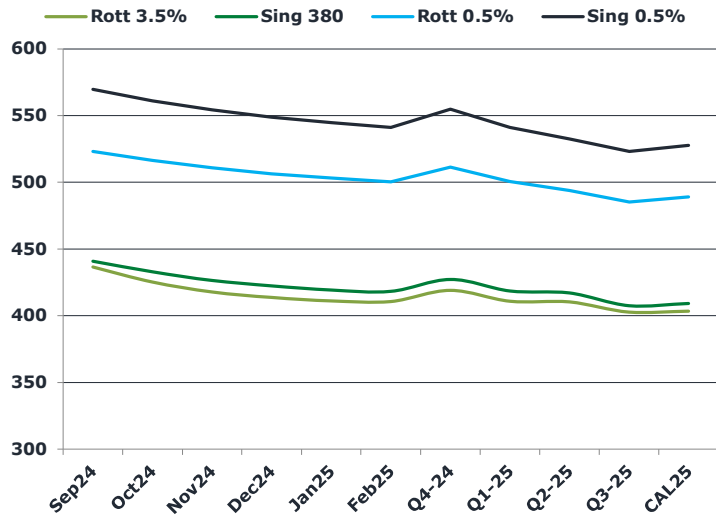
Oil and Energy Market News

Crude prices are holding losses today, with front month Brent futures down 0.75% here. Market participants still look to the Middle East ceasefire talks and what the outcomes might be. Continued lacklustre data from China has added to existing worries regarding crude demand.

Brent

78.91

	Barges 3.5 %	Sing 380cst	Rott 0.5%	Sing 0.5%	Sing Hi5
Sep24	436.40	440.90	523.05	569.75	129
Oct24	425.15	432.90	516.30	561.00	128
Nov24	417.90	426.40	510.80	554.25	128
Dec24	413.65	422.40	506.30	548.75	126
Jan25	411.15	419.15	503.05	544.75	126
Feb25	410.65	418.15	500.30	541.00	123
Q4-24	419.00	427.25	511.25	554.75	128
Q1-25	410.75	418.50	500.50	541.25	123
Q2-25	410.25	417.00	493.75	532.50	116
Q3-25	402.75	407.50	485.25	523.00	116
CAL25	403.50	409.25	489.00	527.75	119



Fuel Oil Market News

A choppy day of trading for the HSFO EW differential, with the front month trading a low of \$1.75/mt down from Friday's settlement of \$7.00/mt. The contract did recoup most of the losses in the afternoon, bolstered by Chinese buying the Sing 380cst, but still remains in the red for the day.

Volatility in the Sep24/Oct24 Rott 3.5% spread seemed to be the driving force in the weakening EW. The spread traded a high of \$12.25/mt – two dollars above settlement.

	Rott GOFO	Sing GOFO	R FoGo	S FoGo	Rott Hi5
Sep24	271.36	244.11	-184.75	-115.25	87
Oct24	283.26	252.78	-192.00	-124.75	91
Nov24	288.49	258.54	-195.50	-130.75	93
Dec24	292.14	261.79	-199.50	-135.50	93
Jan25	294.80	265.41	-203.00	-139.75	92
Feb25	294.71	266.41	-205.00	-143.50	90
Q4-24	287.75	258.15	-195.50	-130.75	92
Q1-25	294.50	266.90	-204.75	-144.25	90
Q2-25	292.00	264.68	-208.50	-149.25	84
Q3-25	298.75	270.45	-216.25	-155.00	83
CAL25	298.50	270.56	-213.00	-152.00	86
CAL 26	308.75	276.89	0.00	-166.00	79



Fuel Oil Daily Evening Report

London +44 20 7090 1134 - info@freightinvestor.com | Singapore +65 6535 5189 - info@freightinvestor.asia | Shanghai +86 21 63012568

19 August 2024

TIME SPREADS FUEL

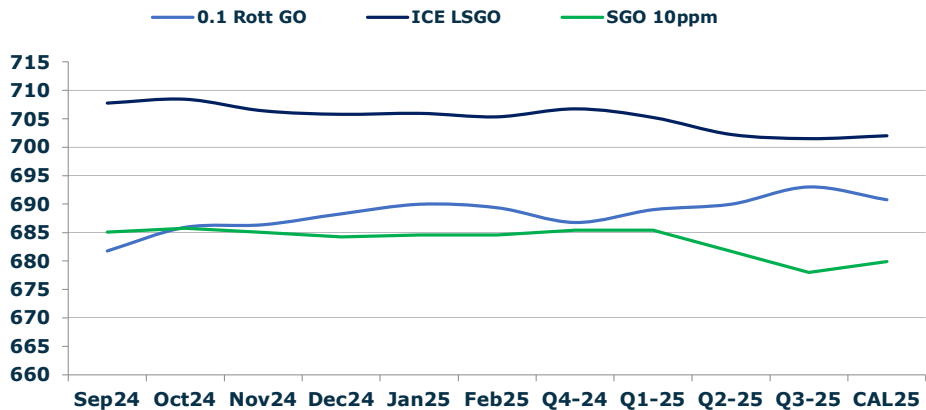
	Barges 3.5	S 380	Rott 0.5%	Sing 0.5%
Sep24/Oct24	11.25	8.00	6.75	8.75
Oct24/Nov24	7.25	6.50	5.50	6.75
Nov24/Dec24	4.25	4.00	4.50	5.50
Dec24/Jan25	2.50	3.25	3.25	4.00
Jan25/Feb25	0.50	1.00	2.75	3.75
Q4-24/Q1-25	8.25	8.75	10.75	13.50
Q1-25/Q2-25	0.50	1.50	6.75	8.75
Q2-25/Q3-25	7.50	9.50	8.50	9.50
CAL25/CAL26	17.00	17.50	23.5	25.00

GASOIL CURVES

	Rott 0.1	SGO 10ppm	ICE GO
Sep24	681.8	685.0	707.8
Oct24	685.9	685.7	708.4
Nov24	686.4	684.9	706.4
Dec24	688.3	684.2	705.8
Jan25	690.0	684.6	706.0
Feb25	689.4	684.6	705.4
Q4-24	686.8	685.4	706.8
Q1-25	689.0	685.4	705.3
Q2-25	690.0	681.7	702.3
Q3-25	693.0	678.0	701.5
CAL25	690.8	679.8	702.0

EW SPREAD

	EW380	EW0.5%
Sep24	4.50	46.70
Oct24	7.75	44.70
Nov24	8.50	43.45
Dec24	8.75	42.45
Jan25	8.00	41.70
Feb25	7.50	40.70
Q4-24	8.25	43.50
Q1-25	7.75	40.75
Q2-25	6.75	38.75
Q3-25	4.75	37.75
CAL25	5.25	38.75



Contact US:

Luke Longhurst
 Email: lukel@freightinvestor.com
 Mobile: (+44) 7966 968761

Ricky Forman
 Email: rickyf@freightinvestor.com
 Mobile: (+44) 7868 708719

Sam Twyford
 Email: samt@freightinvestor.com
 Mobile: (+44) 7729 118643

Archie Smith
 Email: archies@freightinvestor.com
 Mobile: (+44) 7355 020663

Jessie Deng
 Email: jessied@freightinvestor.com
 Mobile: (+86) 13524516743

Jarryd Smith
 Email: jarryds@freightinvestor.com
 Mobile: (+65) 8798 4987

Min Bao
 Email: minb@freightinvestor.com
 Mobile: (+65) 9785 4627

The information provided in this communication is not intended for retail clients. It is general in nature only and does not constitute advice or an offer to sell, or the solicitation of an offer to purchase any swap or other financial instruments, nor constitute any recommendation on our part. The information has been prepared without considering your investment objectives, financial situation, or knowledge and experience. This material is not a research report and is not intended as such. FIS is not responsible for any trading decisions taken based on this communication. Trading swaps and over-the-counter derivatives, exchange-traded derivatives, and options involve substantial risk and are not suitable for all investors. You are advised to perform an independent investigation to determine whether a transaction is suitable for you. No part of this material may be copied or duplicated in any form by any means or redistributed without our prior written consent. Freight Investor Services Ltd (FIS) is authorised and regulated by the Financial Conduct Authority (FRN: 211452) and is a member of the National Futures Association ("NFA"). Freight Investor Services PTE Ltd ('FIS PTE') is a private limited company, incorporated and registered in Singapore with company number 200603922G, and has subsidiary offices in India and Shanghai. Freight Investor Solutions DMCC ('FIS DMCC') is a private limited company, incorporated and registered in Dubai with company number DMCC1225. Further information about FIS including the location of its offices can be found on our website at freightinvestorservices.com