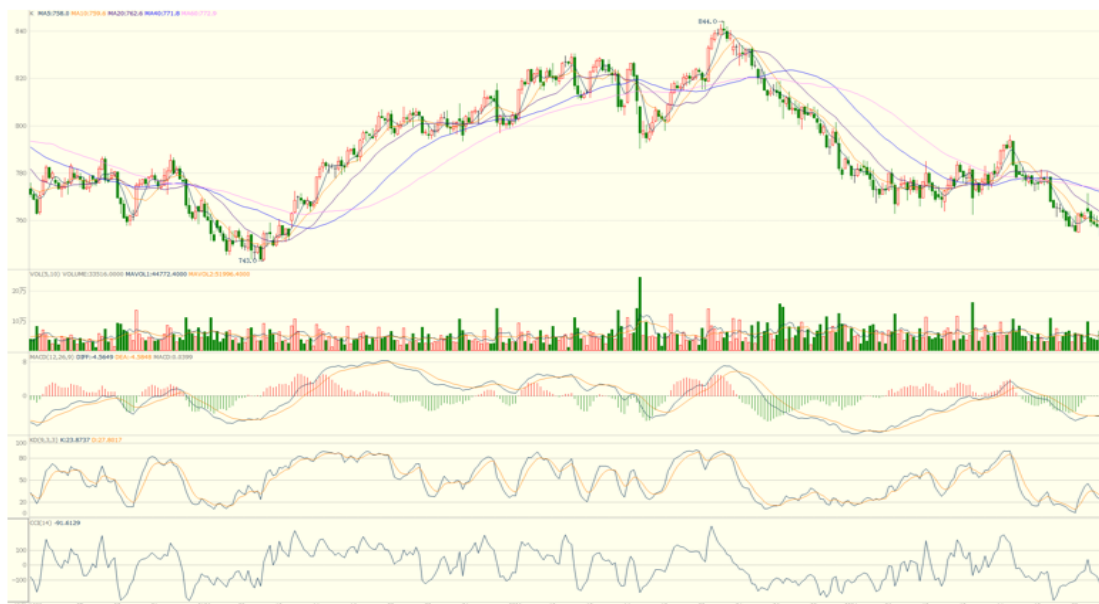


21/03/2025

Verdict- Neutral.

The DCE iron ore May25 dropped today. China equity market experienced a significant decline, and there was a widespread sell-off across various commodities. However, from a technical perspective, iron ore seems to be oversold. The MACD indicator in the hourly cycle has flattened out. The CCI indicator in the hourly cycle fell into the bearish territory yesterday but recovered today. If the volatility of macro factors or other assets decreases again in the future, iron ore is expected to stabilize.

First support 743.0, First resistance 779.0.



(Hourly Candles Chart from 3/1/2025 to 21/3/2025)

- Closing: 757.5
- Hourly Slow Stochastic KD: 27
- Hourly MACD: Flattened
- Aggregate Open Interest: 975,000 lots (+11,000)
- Aggregate Trading Volume increase

S1: 743.0

S2: 700.0

R1: 779.0

R2: 796.0