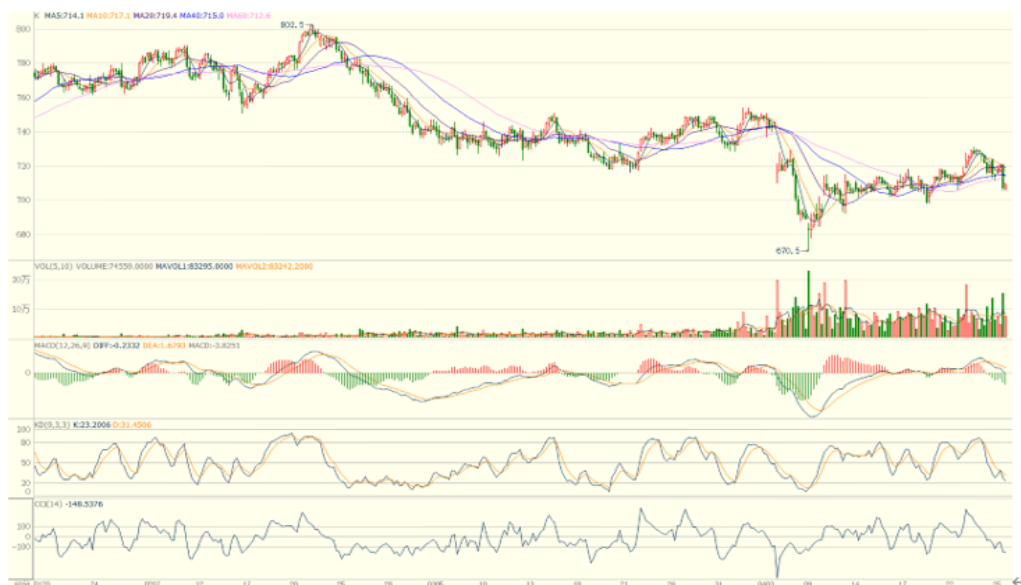


25/04/2025

Verdict-Neutral.

The DCE Sep25 iron ore on DCE saw a correction in the afternoon. The MACD in the hourly cycle has widened in the bearish area. The Slow Stochastic KD in the hourly cycle crossed downwards in the bullish area and then corrected, approaching the bearish area. The CCI in the hourly cycle has entered the bearish area. The technical signals suggest a short-term oversold situation. In the short term, if it can regain the position of 712.0 on the 60-hour cycle again, there is possibility for a new rebound. This level happens to be the neckline of a reversal from a high level. Otherwise, iron ore potentially sees further decline.

First support 698.0, First resistance 731.0.



(Hourly Candles Chart from 20/1/2025 to 25/4/2025)↵

- Closing: 709.0↵
- Hourly Slow Stochastic KD: 31 ↵
- Hourly MACD: Widening in Bearish Area↵
- Aggregate Open Interest: 1,022,000 lots (+26,000)↵
- Aggregate Trading Volume increase↵

S1: 698.0↵
S2: 670.5↵
R1: 731.0↵
R2: 754.0↵