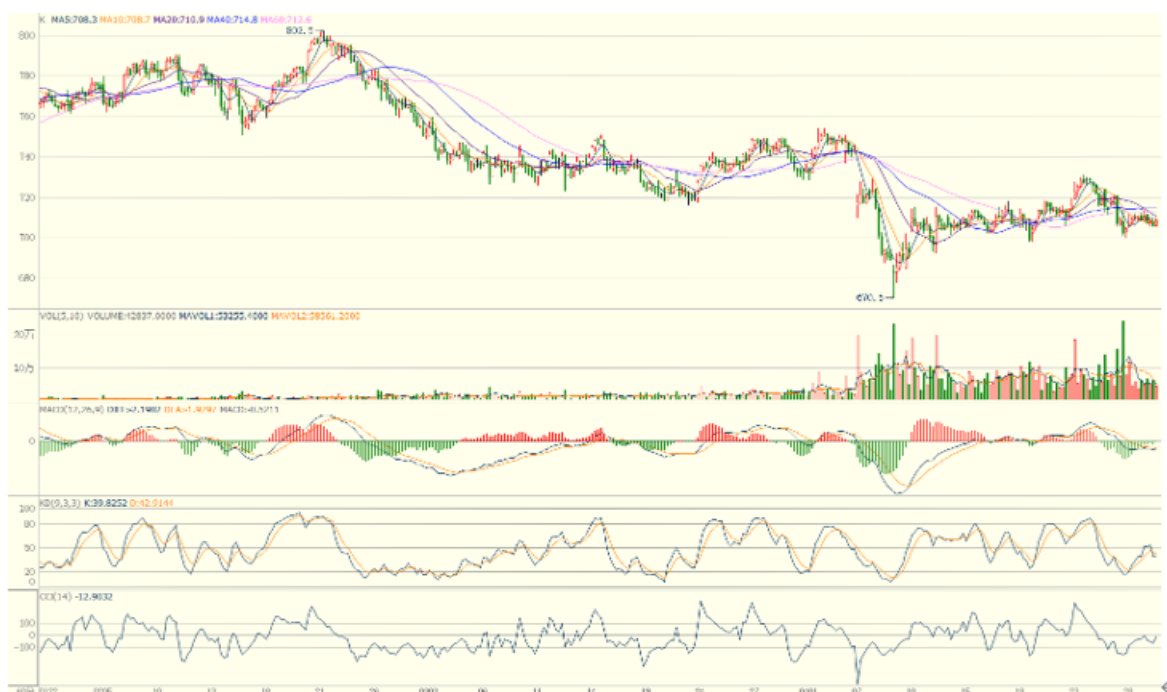


07/05/2025

Verdict-Neutral.

DCE iron ore Sep25 rose first and then fell, generally showing a flat trend as expected. On the hourly chart, the MACD indicator narrows in the bullish area. The CCI indicator on the hourly chart turns around and returns to the neutral area after approaching the bearish area. The open interest has increased significantly, and the conflict between buyers and sellers have intensified.

First support 696.0, First resistance 726.0.



(Hourly Candles Chart from 23/1/2025 to 7/5/2025)↵

- Closing: 708.0↵
- Hourly Slow Stochastic KD: 50 ↵
- Hourly MACD: Narrowing above bullish territory↵
- Aggregate Open Interest: 1,005,000 lots (+ 22,000)↵
- Aggregate Trading Volume increase↵

S1: 696.0↵

S2: 670.5↵

R1: 726.0↵

R2: 731.0↵