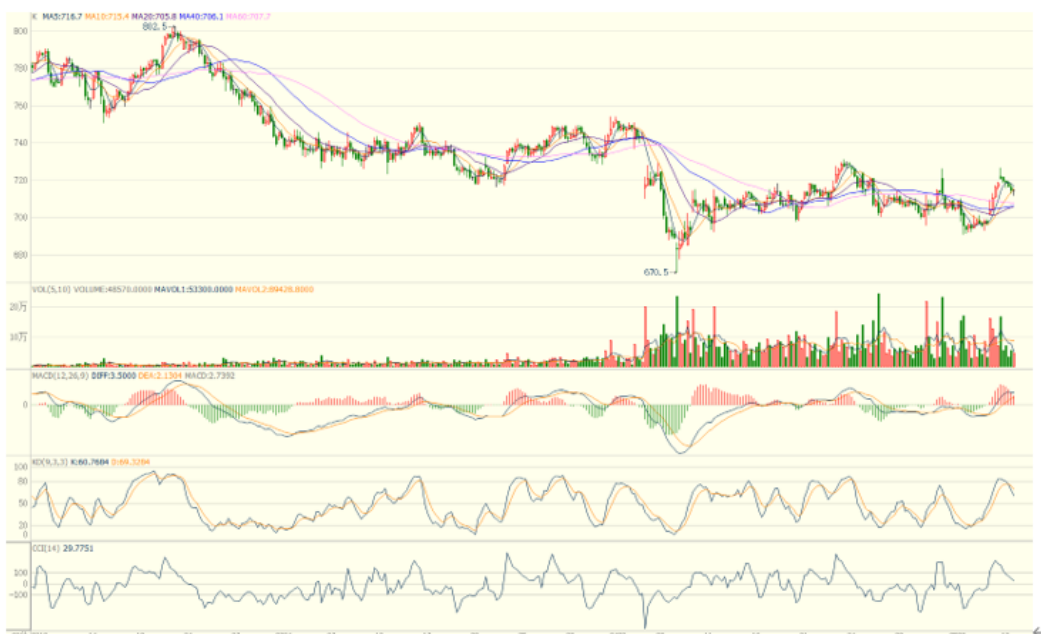


13/05/2025

### Verdict-Neutral.

DCE iron ore Sep25 iron ore, created a high point during the day, but then it fell below the previous closing price. On the hourly cycle, the MACD narrowed in the bullish area. The hourly cycle's Slow Stochastic KD corrected after forming a dead cross below the overbought area. The hourly cycle's CCI entered the neutral area from the bullish area. In the short term, the correction space is limited, and it is ready for a rebound after touching the bottom.

First support 701.5, First resistance 726.0.



(Hourly Candles Chart from 10/2/2025 to 13/5/2025)↵

- Closing: 714.5↵
- Hourly Slow Stochastic KD: 69 ↵
- Hourly MACD: Narrowing in bullish territory↵
- Aggregate Open Interest: 1,075,000 lots (+ 12,000)↵
- Aggregate Trading Volume decrease↵

S1: 701.5↵

S2: 693.0↵

R1: 726.0↵

R2: 740.0↵