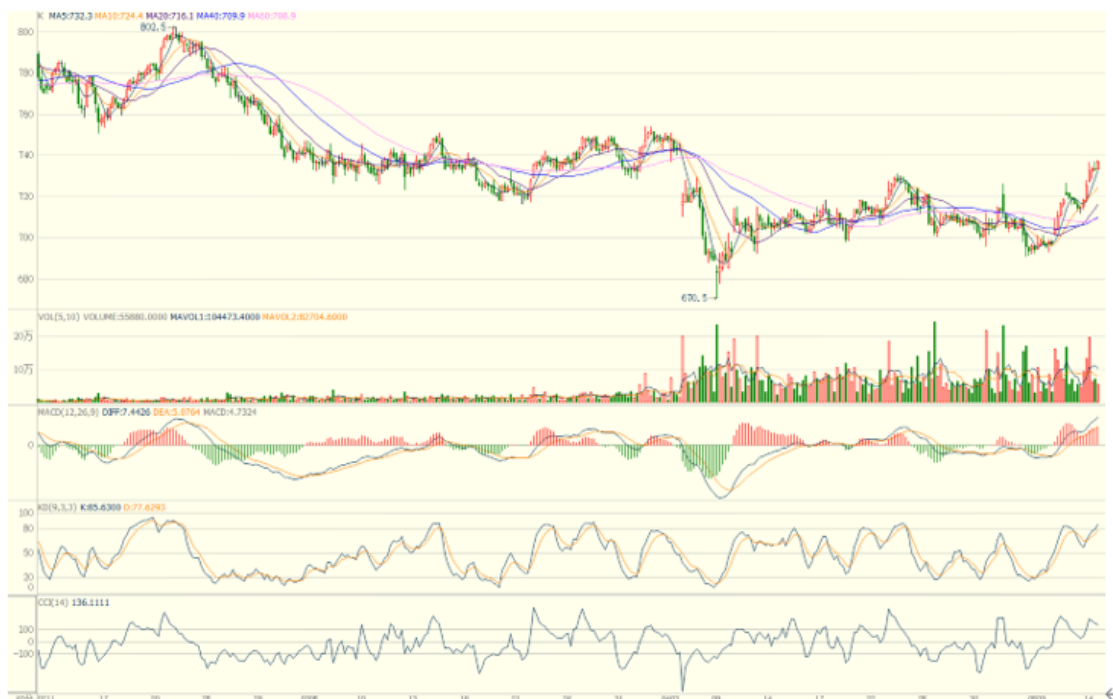


14/05/2025

### Verdict-Neutral to Bullish.

DCE iron ore Sep25 iron ore, accelerated its rebound after a slight correction, maintaining its short-term upward trend. The hourly MACD has widened in the bullish area, while the hourly CCI remains in the bullish territory. It is expected to further challenge the April high of 754.0.

**First support 713.5, First resistance 754.0.**



(Hourly Candles Chart from 11/2/2025 to 14/5/2025)↵

- Closing: 737.0↵
- Hourly Slow Stochastic KD: 77 ↵
- Hourly MACD: Widening in bullish territory↵
- Aggregate Open Interest: 1,105,000 lots (+ 30,000)↵
- Aggregate Trading Volume increase↵

S1: 713.5↵  
S2: 700.0↵  
R1: 754.0↵  
R2: 780.0↵