



# London Iron Ore Market Report

London +44 (0) 20 7090 1120 - info@freightinvestor.com | Singapore +65 6535 5189 - info@freightinvestor.asia

27 June 2025

The London afternoon session opened at \$94.70, flat price then increased to a high of \$95.10 before decreasing to a low of \$94.40, which was also the close.

Little activity was seen throughout the session in both out rights and spreads, all trading in smalls. Prompt month out rights were seen trading in smalls except for a July trading at \$94.75 in 52kt. Spreads saw prompt month trading in smalls with little liquidity further down the curve.

Noteworthy spreads include an Aug/Nov traded at \$1 in two clips totaling 70kt, June/July also traded in multiple small clips, and a July/Dec traded at \$1.65 in 25kt.

INDEX	Price	Change	MTD
Platts IO 62%	\$94.40	\$1.10	\$94.49

INDEX	Price	Change	MTD
MB IO 65%	\$105.24	\$1.40	\$104.25

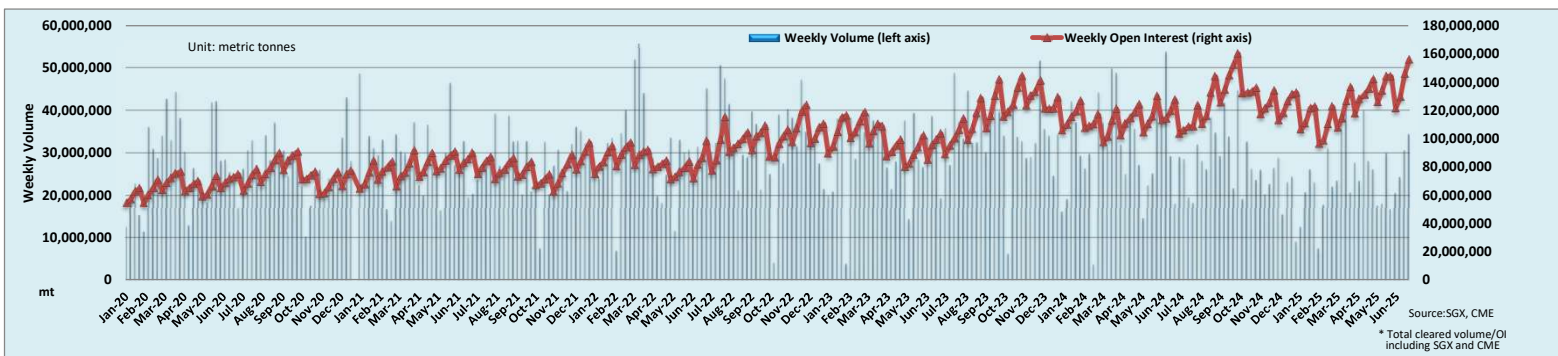
INDEX	Price	Change	MTD
Platts Lump Prem	\$0.1590	\$0.0000	\$0.1570

Iron Ore 62% Futures	Jun 25	Jul 25	Aug 25	Sep 25	Oct 25	Nov 25	Dec 25	Q3 25	Q4 25	Q1 26	Q2 26	Cal 26	Cal 27
London Close \$/t	94.55	94.45	94.15	93.85	93.50	93.15	92.80	94.15	93.15	92.05	90.95	90.45	86.40
Singapore Close \$/t	94.55	94.55	94.25	93.95	93.55	93.15	92.80	94.25	93.15	92.05	90.95	90.55	86.90
Change	+0.00%	-0.11%	-0.11%	-0.11%	-0.05%	+0.00%	+0.00%	-0.11%	+0.00%	+0.00%	+0.00%	-0.11%	-0.58%

IO 62% Spreads	Jun/ Jul	Jul/ Aug	Aug/ Sep	Sep/ Oct	Oct/ Nov	Nov/ Dec	Q3/ Q4	Q4/ Q1	Q1/ Q2 26	Cal 26/Cal 27
London Close \$/t	0.10	0.30	0.30	0.35	0.35	0.35	1.00	1.10	1.10	4.05
Singapore Close \$/t	0.00	0.30	0.30	0.40	0.40	0.35	1.10	1.10	1.10	3.65
Change	0.10	0.00	0.00	-0.05	-0.05	0.00	-0.10	0.00	0.00	0.40

T Session	SGX Volume /mt
Futures 62%	6,375,200
Options	2,605,000
Total	8,980,200

Source:SGX



Source:SGX, CME  
\* Total cleared volume/OI including SGX and CME

Disclaimer: The information provided in this communication is not intended for retail clients. It is general in nature only and does not constitute advice or an offer to sell, or the solicitation of an offer to purchase any swap or other financial instruments, nor constitute any recommendation on our part. The information has been prepared without considering your investment objectives, financial situation, or knowledge and experience. This material is not a research report and is not intended as such. FIS is not responsible for any trading decisions taken based on this communication. Trading swaps and over-the-counter derivatives, exchange-traded derivatives, and options involve substantial risk and are not suitable for all investors. You are advised to perform an independent investigation to determine whether a transaction is suitable for you. No part of this material may be copied or duplicated in any form by any means or redistributed without our prior written consent. Freight Investor Services Ltd (FIS) is authorised and regulated by the Financial Conduct Authority (FRN: 211452) and is a member of the National Futures Association ("NFA"). Freight Investor Services PTE Ltd ('FIS PTE') is a private limited company, incorporated and registered in Singapore with company number 200603922G, and has subsidiary offices in India and Shanghai. Freight Investor Solutions DMCC ('FIS DMCC') is a private limited company, incorporated and registered in Dubai with company number DMCC1225. Further information about FIS including the location of its offices can be found on our website at [www.freightinvestorservices.com](http://www.freightinvestorservices.com)