



# London Iron Ore Market Report

London +44 (0) 20 7090 1120 - info@freightinvestor.com | Singapore +65 6535 5189 - info@freightinvestor.asia

**04 September 2025**

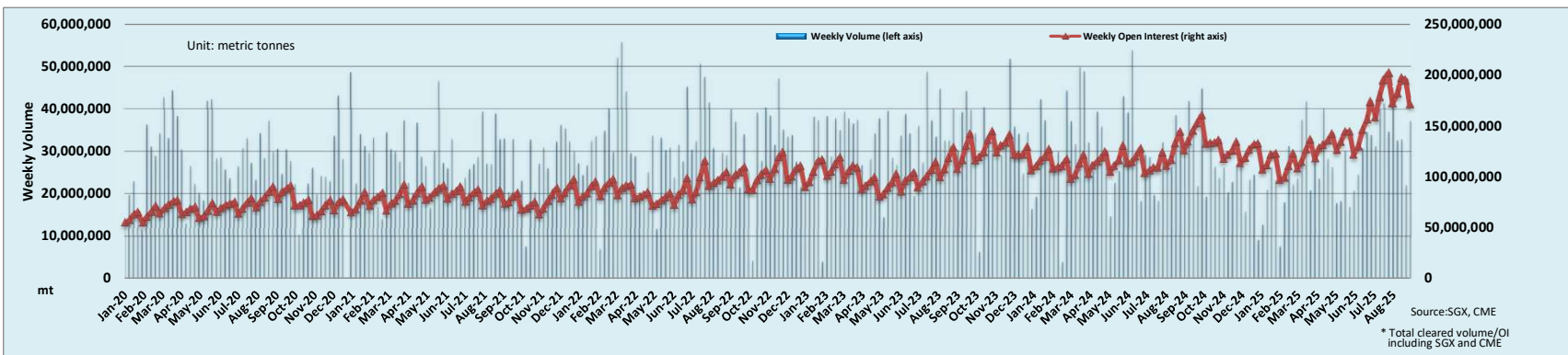
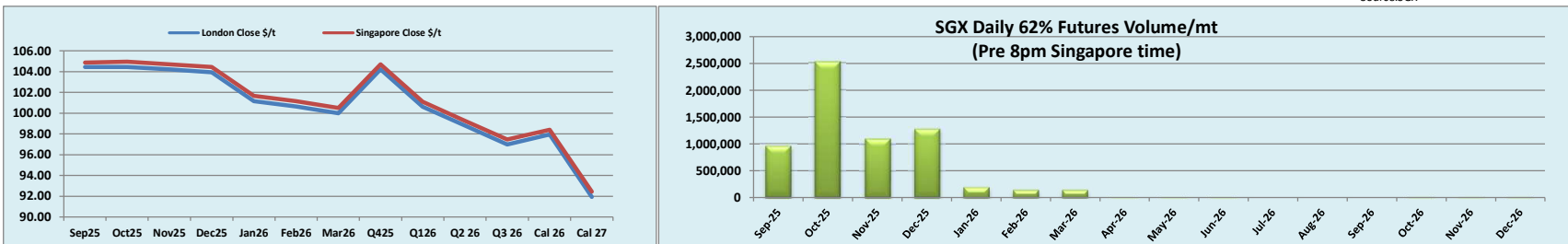
The London afternoon session opened at \$104.60, flat price then fell to a low of \$104.30 before rising to a high of \$104.70 and closing at \$104.50. Little activity was seen in the session, with most of the activity coming in prompt month outright trading in smalls, except for Oct trading in 50+79kt and Q4 trading in multiple 5kt clips totalling 40kt. Oct/Nov continued to see liquidity from the last session, trading at \$0.25 in two clips of 50kt, while Sep/Oct continued to fluctuate around par during the session, trading at par in 50kt towards the end of the session. Further down the curve, Oct/Cal 26 continued to trade at 18/1.50kt at a level of \$6.50.

INDEX	Price	Change	MTD	INDEX	Price	Change	MTD	INDEX	Price	Change	MTD
Platts IO 62%	\$105.10	\$1.50	\$103.31	MB IO 65%	\$122.69	\$1.54	\$120.96	Platts Lump Prem	\$0.1850	\$0.0000	\$0.1845

Iron Ore 62% Futures	Sep 25	Oct 25	Nov 25	Dec 25	Jan 26	Feb 26	Mar 26	Q4 25	Q1 26	Q2 26	Q3 26	Cal 26	Cal 27
London Close \$/t	104.45	104.45	104.20	103.95	101.15	100.65	100.00	104.20	100.60	98.80	97.00	97.95	91.95
Singapore Close \$/t	104.85	104.95	104.70	104.45	101.65	101.15	100.50	104.70	101.10	99.25	97.45	98.40	92.45
Change	-0.38%	-0.48%	-0.48%	-0.48%	-0.49%	-0.49%	-0.50%	-0.48%	-0.49%	-0.45%	-0.46%	-0.46%	-0.54%

IO 62% Spreads	Sep/ Oct	Oct/ Nov	Nov/ Dec	Dec/ Jan	Jan/ Feb	Feb/ Mar	Q4/ Q1	Q1/ Q2	Q2 / Q3 26	Cal 26/Cal 27	T Session	SGX Volume /mt
London Close \$/t	0.00	0.25	0.25	2.80	0.50	0.65	3.60	1.80	1.80	6.00	Futures 62%	6,425,000
Singapore Close \$/t	-0.10	0.25	0.25	2.80	0.50	0.65	3.60	1.85	1.80	5.95	Options	2,896,900
Change	0.10	0.00	0.00	0.00	0.00	0.00	0.00	-0.05	0.00	0.05	Total	9,321,900

Source:SGX



Source:SGX, CME  
\* Total cleared volume/OI including SGX and CME

Disclaimer: The information provided in this communication is not intended for retail clients. It is general in nature only and does not constitute advice or an offer to sell, or the solicitation of an offer to purchase any swap or other financial instruments, nor constitute any recommendation on our part. The information has been prepared without considering your investment objectives, financial situation, or knowledge and experience. This material is not a research report and is not intended as such. FIS is not responsible for any trading decisions taken based on this communication. Trading swaps and over-the-counter derivatives, exchange-traded derivatives, and options involve substantial risk and are not suitable for all investors. You are advised to perform an independent investigation to determine whether a transaction is suitable for you. No part of this material may be copied or duplicated in any form by any means or redistributed without our prior written consent. Freight Investor Services Ltd (FIS) is authorised and regulated by the Financial Conduct Authority (FRN: 211452) and is a member of the National Futures Association ("NFA"). Freight Investor Services PTE Ltd ('FIS PTE') is a private limited company, incorporated and registered in Singapore with company number 200603922G, and has subsidiary offices in India and Shanghai. Freight Investor Solutions DMCC ('FIS DMCC') is a private limited company, incorporated and registered in Dubai with company number DMCC1225. Further information about FIS including the location of its offices can be found on our website at [www.freightinvestorservices.com](http://www.freightinvestorservices.com)